

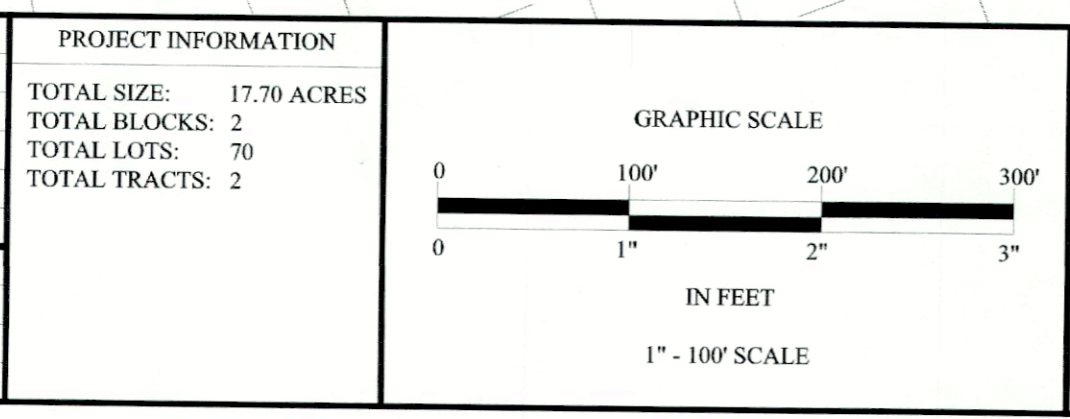
CURVE TABLE					
CURVE	RADIUS	ARC LENGTH	CHORD LENGTH	CHORD BEARING	DELTA ANGLE
C1	80.00	30.20	30.02	S 80°05'07\"	21°37'53\"
C2	80.00	36.31	36.02	S 76°05'46\"	26°00'21\"
C3	20.00	17.66	17.09	N 85°25'59\"	50°35'41\"
C4	50.00	7.09	7.09	S 56°04'22\"	8°07'33\"
C5	50.00	38.80	37.83	N 29°46'46\"	44°27'39\"
C6	50.00	39.62	38.59	S 15°09'05\"	45°24'03\"
C7	50.00	35.70	34.95	S 58°18'32\"	40°34'52\"
C8	50.00	32.72	32.14	S 82°29'17\"	37°29'11\"
C9	50.00	50.52	48.40	S 34°47'46\"	57°53'32\"
C10	50.00	21.10	20.94	S 06°14'19\"	24°10'38\"
C11	370.00	9.65	9.65	N 68°38'29\"	1°29'40\"
C12	370.00	62.63	62.56	N 63°02'42\"	9°41'55\"
C13	370.00	59.53	59.46	N 53°35'11\"	9°13'05\"
C14	370.00	59.53	59.46	N 44°22'06\"	9°13'05\"
C15	370.00	28.45	28.44	N 37°32'24\"	4°24'18\"
C16	50.00	32.07	31.53	N 12°20'24\"	36°45'09\"
C17	50.00	32.72	32.14	N 49°27'56\"	37°29'55\"
C18	50.00	36.30	35.50	N 89°00'40\"	41°33'32\"
C19	50.00	36.36	35.57	S 49°21'34\"	41°40'01\"
C20	50.00	32.72	32.14	S 09°46'35\"	37°29'55\"
C21	50.00	37.58	36.70	S 30°30'13\"	43°03'41\"
C22	50.00	40.84	39.71	S 75°25'52\"	46°47'38\"
C23	430.00	11.35	11.35	N 37°40'00\"	1°30'45\"
C24	430.00	43.04	43.02	N 41°17'24\"	5°44'04\"
C25	430.00	43.06	43.04	N 47°01'34\"	5°44'15\"
C26	430.00	43.08	43.06	N 52°45'54\"	5°44'26\"
C27	430.00	43.10	43.09	N 58°30'25\"	5°44'36\"
C28	430.00	42.53	42.51	N 64°12'43\"	5°40'00\"
C29	430.00	17.59	17.59	N 68°13'01\"	2°20'36\"
C30	20.00	31.27	28.18	S 65°49'04\"	89°35'14\"
C31	80.00	24.28	24.18	N 78°04'57\"	17°23'16\"
C32	50.00	44.15	42.73	S 46°32'31\"	45°41'36\"
C33	300.00	239.25	232.96	N 85°25'59\"	50°35'41\"
C34	300.00	18.00	17.99	N 67°40'12\"	3°26'13\"
C35	270.00	17.04	17.03	N 67°34'52\"	3°36'55\"
C36	330.00	18.95	18.95	N 67°44'35\"	3°17'28\"
C37	50.00	78.18	70.46	S 65°49'04\"	89°35'14\"
C38	80.00	35.74	35.44	S 80°25'47\"	25°55'44\"
C39	80.00	37.53	37.19	N 54°11'15\"	26°52'53\"
C40	80.00	27.54	27.40	S 30°53'07\"	19°43'21\"
C41	400.00	269.98	264.89	N 50°03'09\"	38°40'20\"
C42	80.00	4.13	4.13	S 61°36'52\"	2°57'26\"

LINE TABLE		
LINE	BEARING	DISTANCE
L1	N 69°16'10\"	7.58
L2	S 69°16'10\"	7.58
L3	N 69°16'10\"	7.58
L4	N 69°16'10\"	13.87
L5	S 29°51'51\"	20.00
L6	N 68°55'26\"	26.50
L7	S 56°55'34\"	52.72
L8	N 50°03'37\"	22.30
L9	N 69°21'19\"	34.32
L10	S 91°17'01\"	8.85
L11	N 69°16'03\"	30.17
L12	N 69°16'03\"	35.04
L13	N 69°16'03\"	39.51
L14	N 42°16'32\"	45.04
L15	N 19°48'26\"	1.85
L16	N 51°15'55\"	3.99
L17	S 51°15'55\"	13.22

REV.	DESCRIPTION	DATE	BY
2	RESPONSE TO COMMENTS	09/21/2021	ACM
1	ORIGINAL RELEASE	11/01/2021	BTW

PROJECT NUMBER: YR08
 CLIENT NAME: WBW SINGLE DEVELOPMENT GROUP, LLC - SERIES 123
 CLIENT LOCATION: 109 W. 2ND ST., STE. 201, GEORGETOWN, TX 78626

APPROVED BY: JCB
 AUTHORIZED BY: WBW



BENCHMARK
 "X" SCRATCHED IN THE TOP OF CURB ON THE NORTH SIDE OF ADDISON STREET

Observed GPS coordinates based on Texas State Plane Coordinate System, NAD83 (2011) datum, Texas Central Zone No. 4203
 N: 10350694.13
 E: 3118228.59
 Z: 849.56 (NAVD88-Geoid12B)

FINAL PLAT OF
 YOWELL RANCH PHASE VIII
 CITY OF KILLEEN, BELL COUNTY, TEXAS

Inst # 2024039536-B

Yalgo Engineering, LLC
 109 W 2nd Street Ste. 201
 Georgetown, TX 78626
 PH (254) 953-5353
 FX (254) 953-5057

Texas Registered Engineering Firm F-24040
 Texas Registered Surveying Firm # 10194797