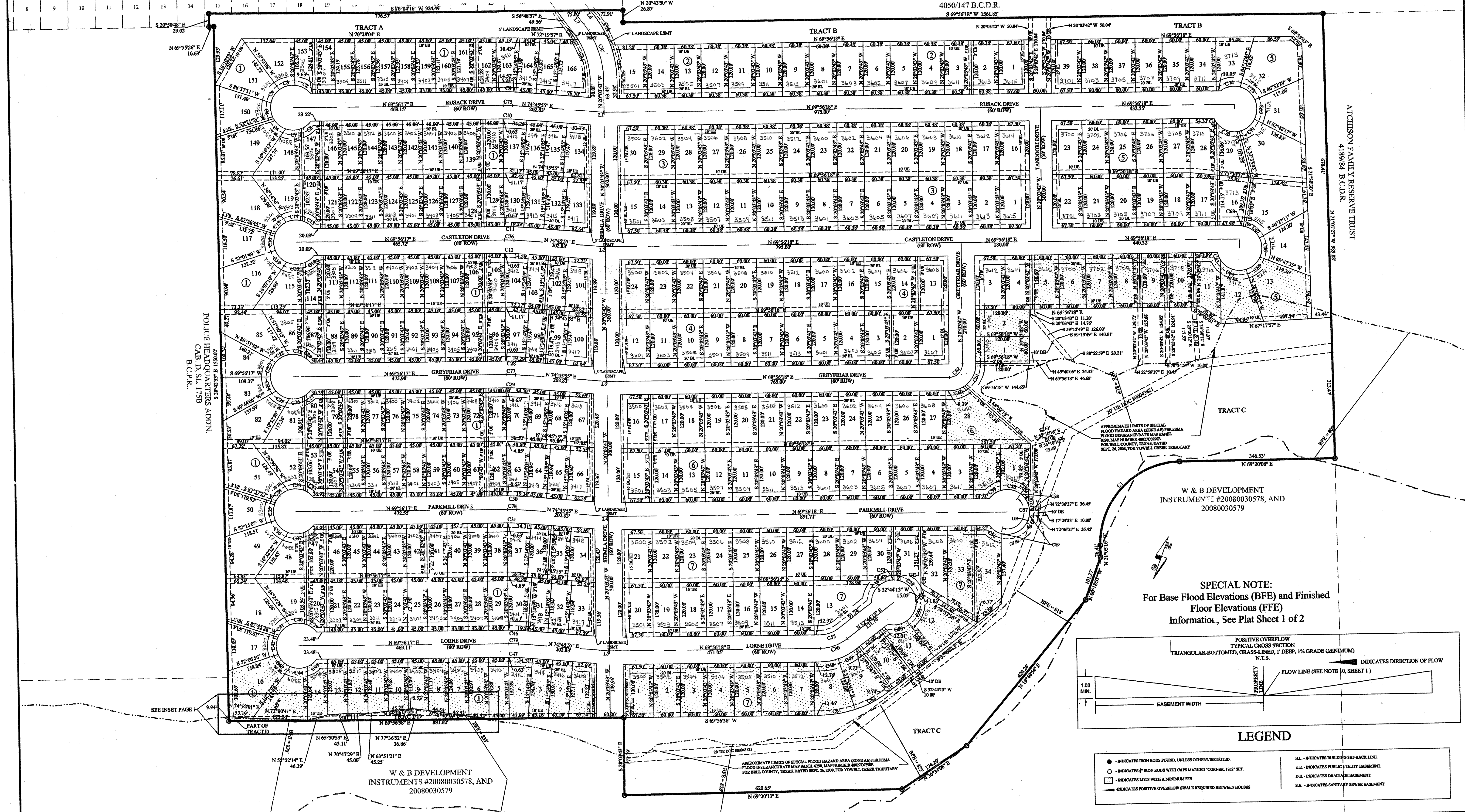
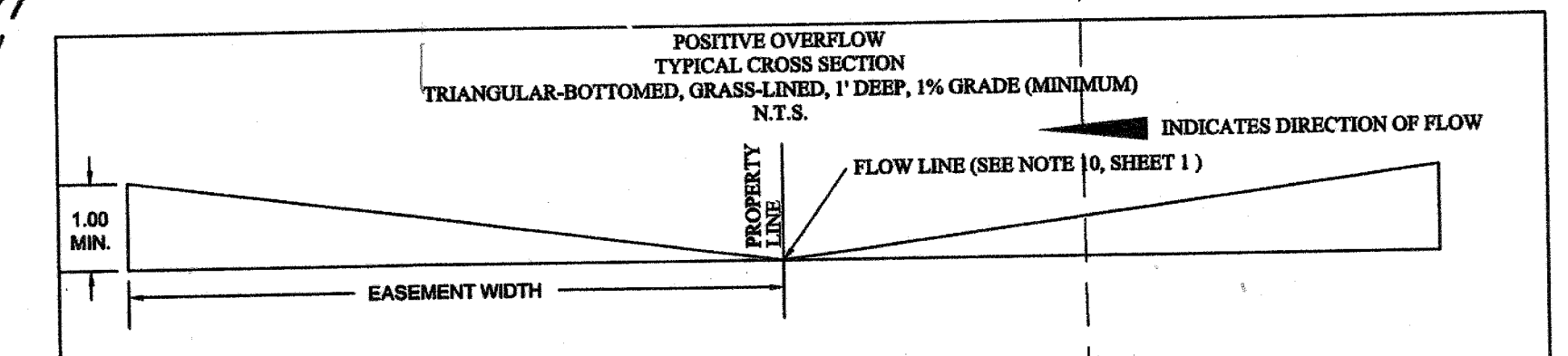


YOWELL RANCH PHASE TWO
CAB D, SL 306 C & D DATED NOVEMBER 9 2010

SHERYL YOWELL ANDERSON 1998 TRUST ETAL
4050/147 B.C.D.R.
S 69°58'18" W 1561.85'



SPECIAL NOTE:
For Base Flood Elevations (BFE) and Finished
Floor Elevations (FFE)
Information, See Plat Sheet 1 of 2

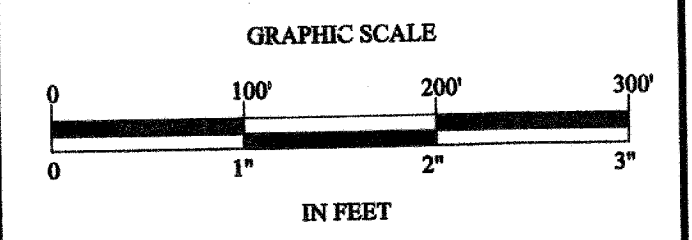


- LEGEND**
- INDICATES IRON RODS FOUND, UNLESS OTHERWISE NOTED.
 - INDICATES IRON RODS WITH CAPS MARKED "CORNER, 1852" SET.
 - INDICATES LOTS WITH A MINIMUM FFB
 - INDICATES POSITIVE OVERFLOW SWALES REQUIRED BETWEEN HOUSES
 - B.L. - INDICATES BUILDING SET-BACK LINE.
 - U.E. - INDICATES PUBLIC UTILITY EASEMENT.
 - D.B. - INDICATES DRAINAGE BASEMENT.
 - S.S. - INDICATES SANITARY SEWER EASEMENT.

REV.	DESCRIPTION	DATE	BY
6	REMOVED LFE SHADING FROM LOTS 3, 4 AND 14 BLOCK 5	5/24/11	BTW
5	ADDED BASEMENTS FOR ELECTRIC UTILITIES	5/24/11	BTW
4	ADDED INSET DETAIL FOR TRACT D	5/11/11	BTW
3	REMOVED LOTS 6-16 BLOCK 1 FROM FLOOD PLAIN	4/21/11	BTW
2	CHANGES MADE PER CITY OF KILLEEN STAFF REQUESTS	10/19/10	BTW
1	ORIGINAL RELEASE	10/08/10	BTW

PROJECT INFORMATION	
TOTAL SIZE:	84.25 ACRES
TOTAL BLOCKS:	7
TOTAL LOTS:	336
TOTAL TRACTS:	4

BENCHMARK	
Wallace Group Panel #20	PK/Strip in Featherline Road
ELEV:	864.68



**FINAL PLAT OF
YOWELL RANCH, PHASE THREE
CITY OF KILLEEN, BELL COUNTY, TEXAS**

<p>Yalgo, LLC 3000 Illinois Ave., Suite 100 Killeen, TX 76543 PH (254) 953-5353 FX (254) 953-0032</p>	<p>SHEET 2 OF 2</p>
------------------------------------------------------------------------------------------------------------------------------	-----------------------------------------------