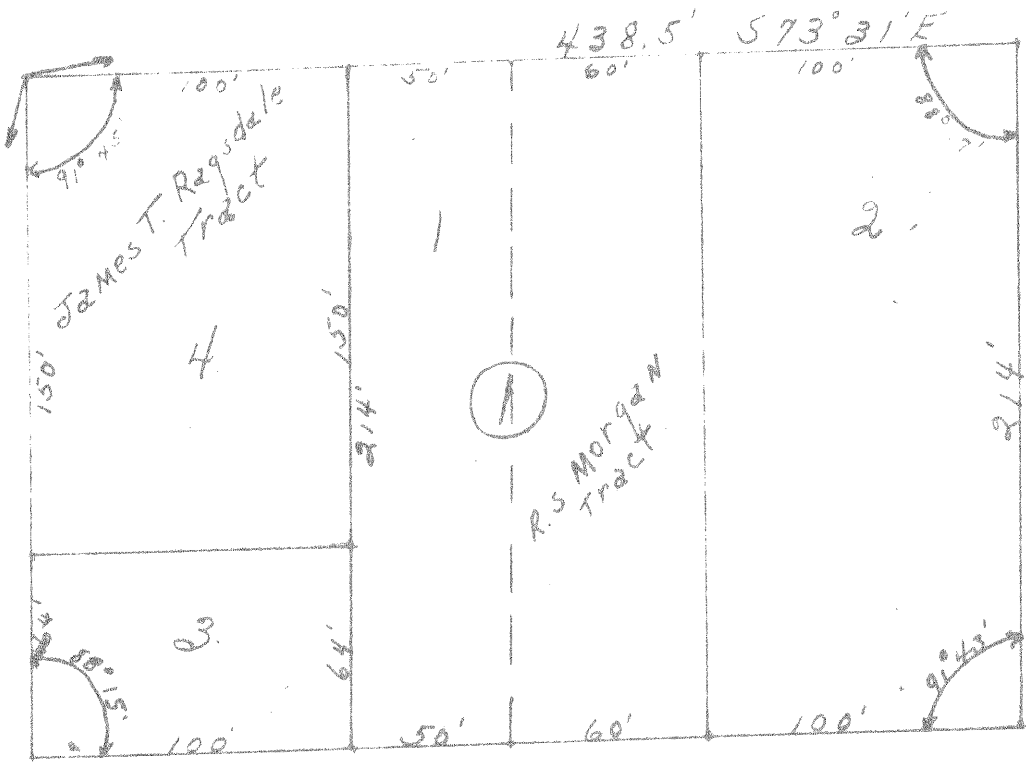
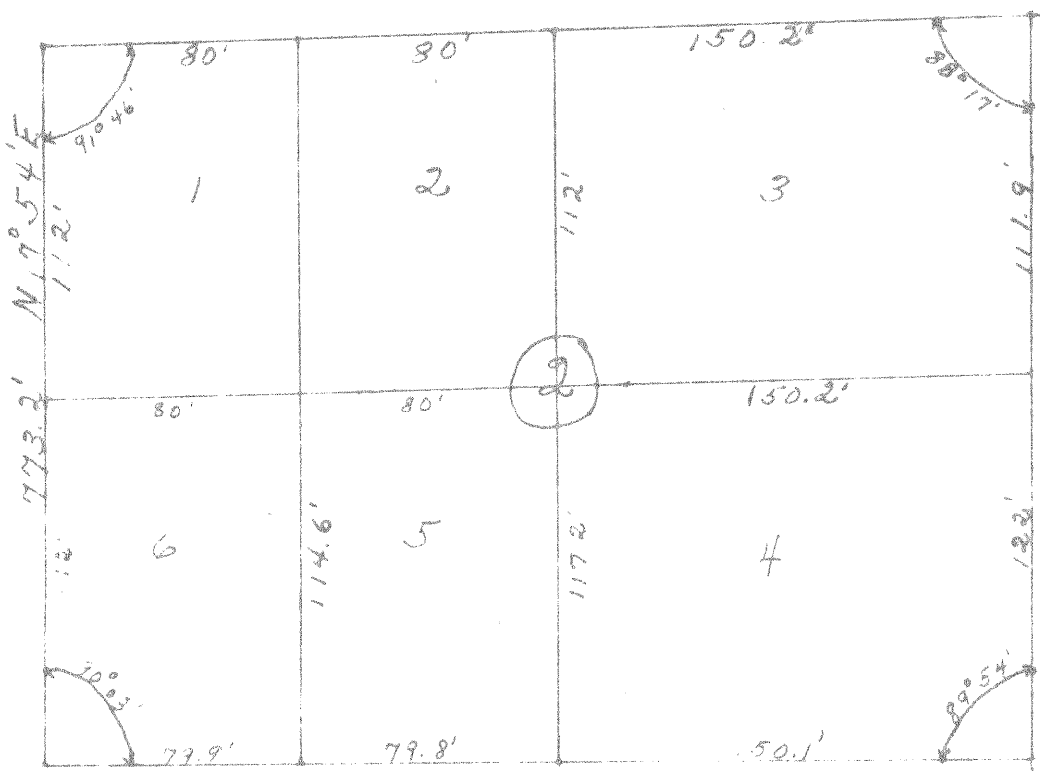


U.S. HWY. No 190

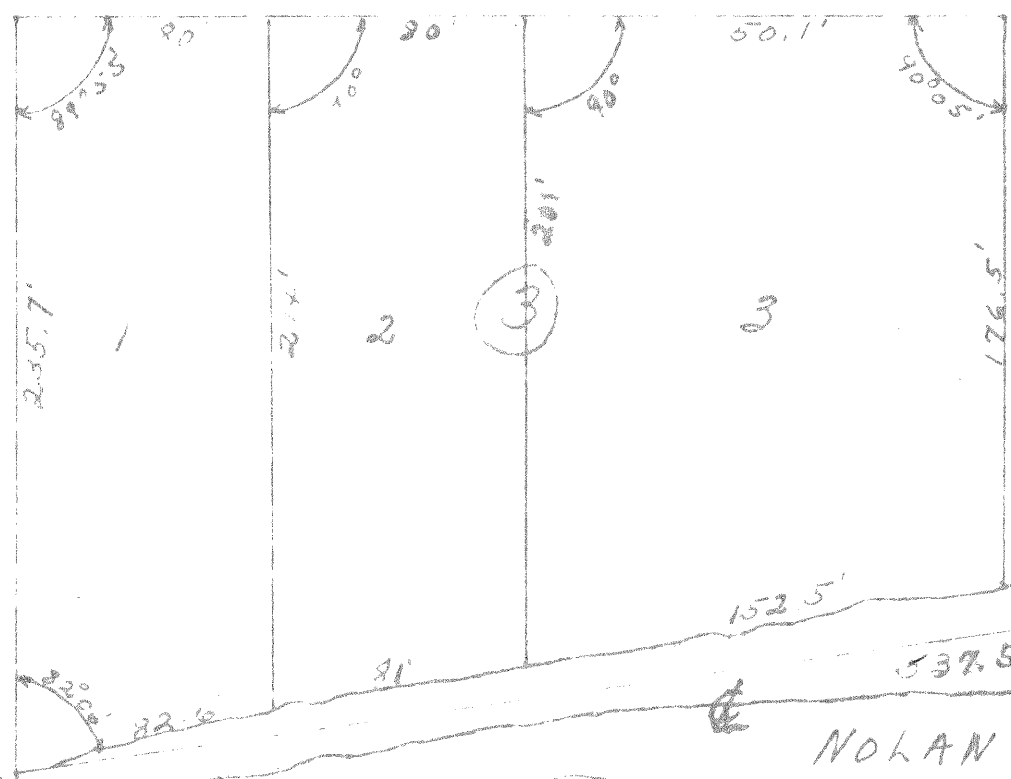
100'



AVENUE "I"



AVENUE "J"



NOLAN CREEK

WOLF ADDITION
 KILLEEN, BELL COUNTY, TEXAS
 December, 1947 scale = 1" = 60'
 O. R. (CHICK) McELVA'S ENGINEERS
 DALLAS

STRINGER ADDITION

NOLAN STREET