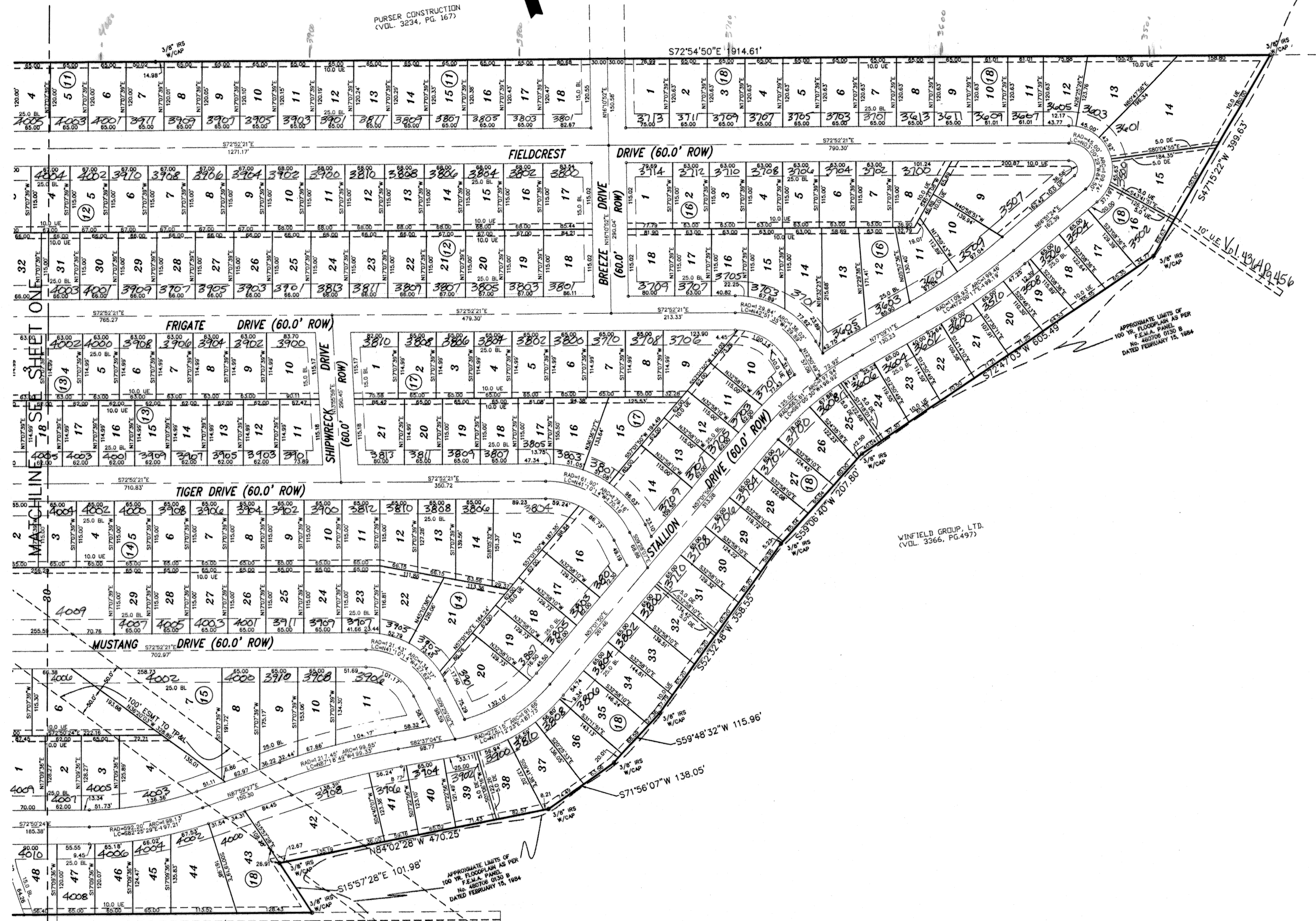
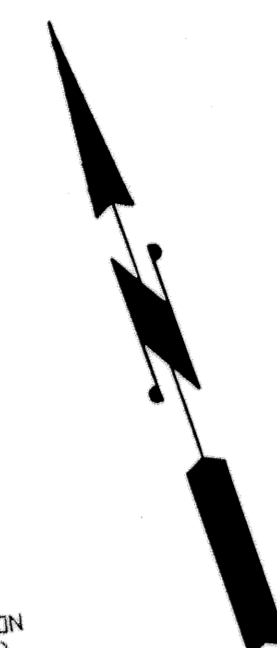


CURVE	DELTA	RADIUS	ARC	TANGENT	BEARING	CHORD
1	12°42'26"	449.04	99.59	50.00	N13°30'20"E	99.39
2	22°18'31"	253.58	98.73	50.00	S08°42'18"W	98.11
3	53°27'42"	51.67	48.21	26.02	S09°38'12"E	46.48
4	129°56'01"	15.00	34.02	32.12	S78°41'58"W	27.18

LINE	LENGTH	BEARING
L1	30.00	N 53°39'57" E
L2	30.00	S 17°07'39" W
L3	68.20	N 53°39'57" E



PURSER CONSTRUCTION
(VOL. 3234, PG. 167)

APPROXIMATE LIMITS OF
100' W. FLOODPLAIN AS PER
NO. 148714-000-000
DATED FEBRUARY 15, 2004

WINFIELD GROUP, LTD.
(VOL. 3366, PG. 497)

IVY CONDOR
(VOL. 545, PG. 280)

NO.	DATE	REVISIONS
1	3/21	DRAINAGE AREA & ELLUME SIZE
		REMARKS
		BY
		REV

FINAL PLAT

**WINDFIELD ESTATES,
PHASE FIVE**

KILLEEN, BELL COUNTY, TEXAS

MITCHELL & ASSOCIATES, INC.
ENGINEERING & SURVEYING
102 N. COLLEGE ST., KILLEEN, TEXAS (254) 634-5541

DWG No. 14181-D
DATE: FEB. 2001
SCALE: 1"=100'
AREA: 95.15 Acres

Cabinet C, Slide 215e