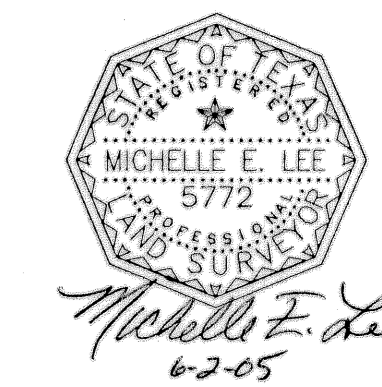


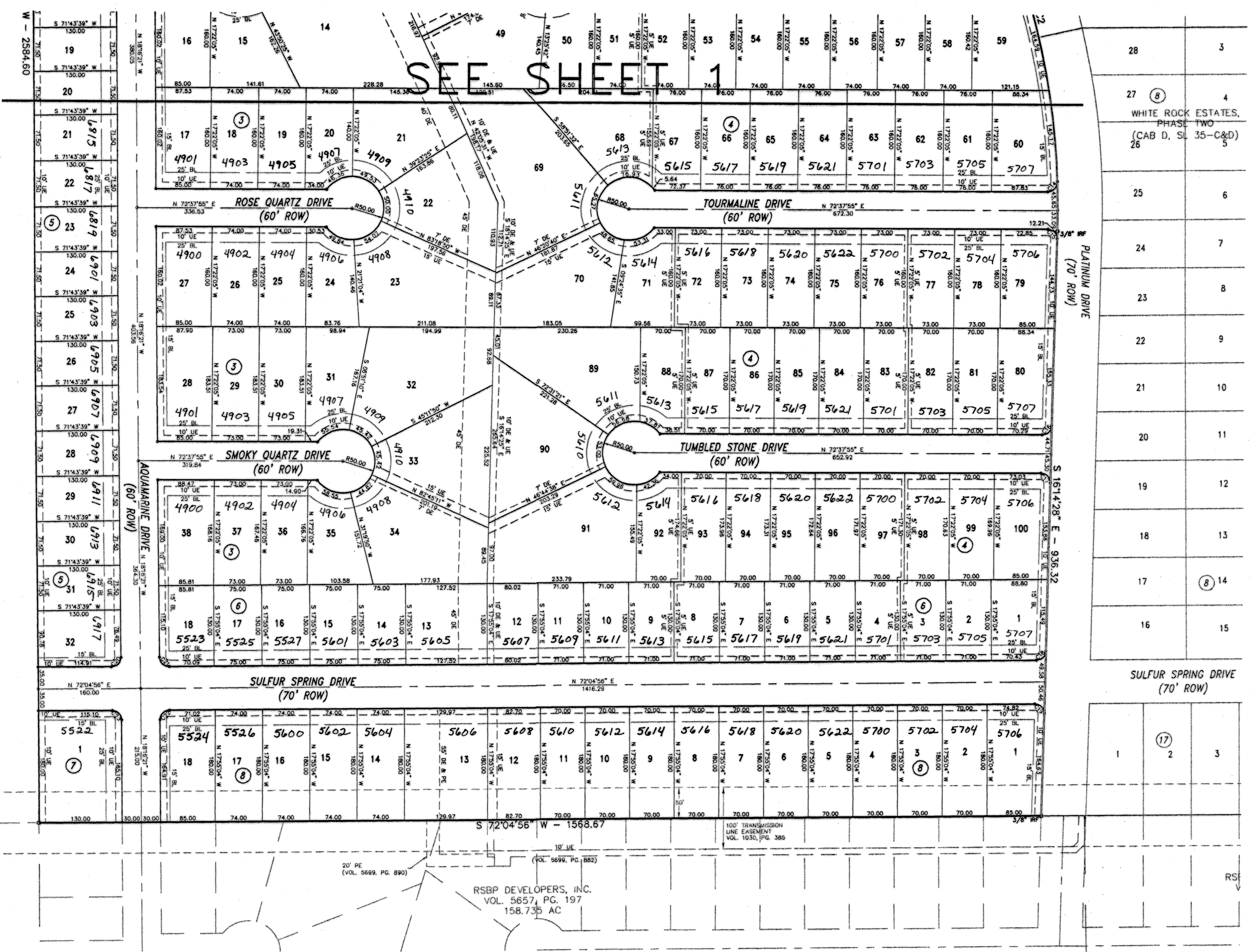
**WHITE ROCK ESTATES  
 PHASE THREE  
 KILLEEN, BELL COUNTY, TEXAS**

**FINAL PLAT**



Project No.:	2005-009
Acres:	85.101
No. of Lots:	231
Scale:	1" = 100'
Date:	03/21/05
Design By:	MEL/BCC
Sheet No.:	2 OF 2

CURVE TABLE						
CURVE	DELTA	RADIUS	ARC	TANGENT	BEARING	CHORD
C1	29°29'26"	715.00	368.01	188.18	S 32°20'51" E	363.97
C2	30°51'06"	1265.00	681.15	349.05	S 31°40'01" E	672.95
C3	15°02'49"	300.00	78.79	39.62	N 65°06'31" E	78.56
C4	15°03'24"	300.00	78.84	39.65	N 65°06'13" E	78.61
C5	17°03'10"	300.00	89.29	44.98	N 64°06'20" E	88.96
C6	90°14'03"	15.00	23.62	15.06	N 27°30'53" E	21.26
C7	88°23'57"	15.00	23.14	14.59	N 63°10'06" W	20.91
C8	104°23'03"	15.00	27.33	19.33	N 10°49'58" E	23.70
C9	74°38'40"	15.00	19.54	11.44	N 84°24'54" W	18.19
C10	110°53'57"	15.00	29.03	21.78	N 08°21'29" E	24.71
C11	74°42'44"	15.00	19.56	11.45	N 84°26'56" W	18.20
C12	97°22'45"	15.00	25.49	17.07	N 10°42'46" E	22.53
C13	88°08'52"	15.00	23.08	14.52	N 77°54'41" W	20.87
C14	92°26'23"	15.00	24.20	15.65	N 26°24'43" E	21.66
C15	91°07'37"	15.00	23.86	15.30	N 61°48'17" W	21.42
C16	88°52'23"	15.00	23.27	14.71	N 28°11'43" E	21.00
C17	91°07'37"	15.00	23.86	15.30	N 61°48'17" W	21.42
C18	88°19'25"	15.00	23.12	14.57	N 27°55'14" E	20.90
C19	91°40'35"	15.00	24.00	15.45	N 62°04'46" W	21.52
C20	90°21'17"	15.00	23.65	15.09	N 26°54'18" E	21.28
C21	89°38'43"	15.00	23.47	14.91	N 63°05'42" E	21.15
C22	90°21'17"	15.00	23.65	15.09	N 26°54'18" W	21.28
C23	89°38'43"	15.00	23.47	14.91	N 63°05'42" W	21.15



28	3
27	4
26	5
25	6
24	7
23	8
22	9
21	10
20	11
19	12
18	13
17	14
16	15

1	2	3
---	---	---

**Access Note:** Access is prohibited onto Stagecoach Road from Lots 1-12, Block 1, and Lot 1, Block 5. Access is prohibited onto Platinum Drive from Lot 1, Block 1, Lot 1, Block 2, Lot 1, 16, 17, 37, 38, 59, 60, 79, 80, 100, Block 4, Lot 1, Block 6, and Lot 1, Block 8. Access is prohibited onto Sulfur Spring Drive from Lot 32, Block 5, and Lot 1, Block 7.

**Construction Note:** No structures temporary or permanent, including fences, are to be constructed on or in the combination drainage easement and utility easements.

FILED FOR RECORD this \_\_\_\_ day of \_\_\_\_\_, 20\_\_ A.D.  
 Cabinet \_\_\_\_\_, Slide \_\_\_\_\_, Plat Records of Bell County, Texas.  
 Dedication Instrument in Volume \_\_\_\_\_, Page \_\_\_\_\_, Deed Records of Bell County, Texas.

DAN M. FERGUS, ANITA P. FERGUS, TRUSTEES  
 ANITA P. FERGUS TRUST, DAN M. FERGUS, JR., TRUSTEE  
 DAN M. FERGUS, DAN M. FERGUS, JR., TRUSTEES  
 DAN M. FERGUS, ANITA P. FERGUS, TRUSTEES  
 VOL. 3258, PG. 323  
 VOL. 1400 AC

RSBP DEVELOPERS, INC.  
 VOL. 5657, PG. 197  
 158.735 AC