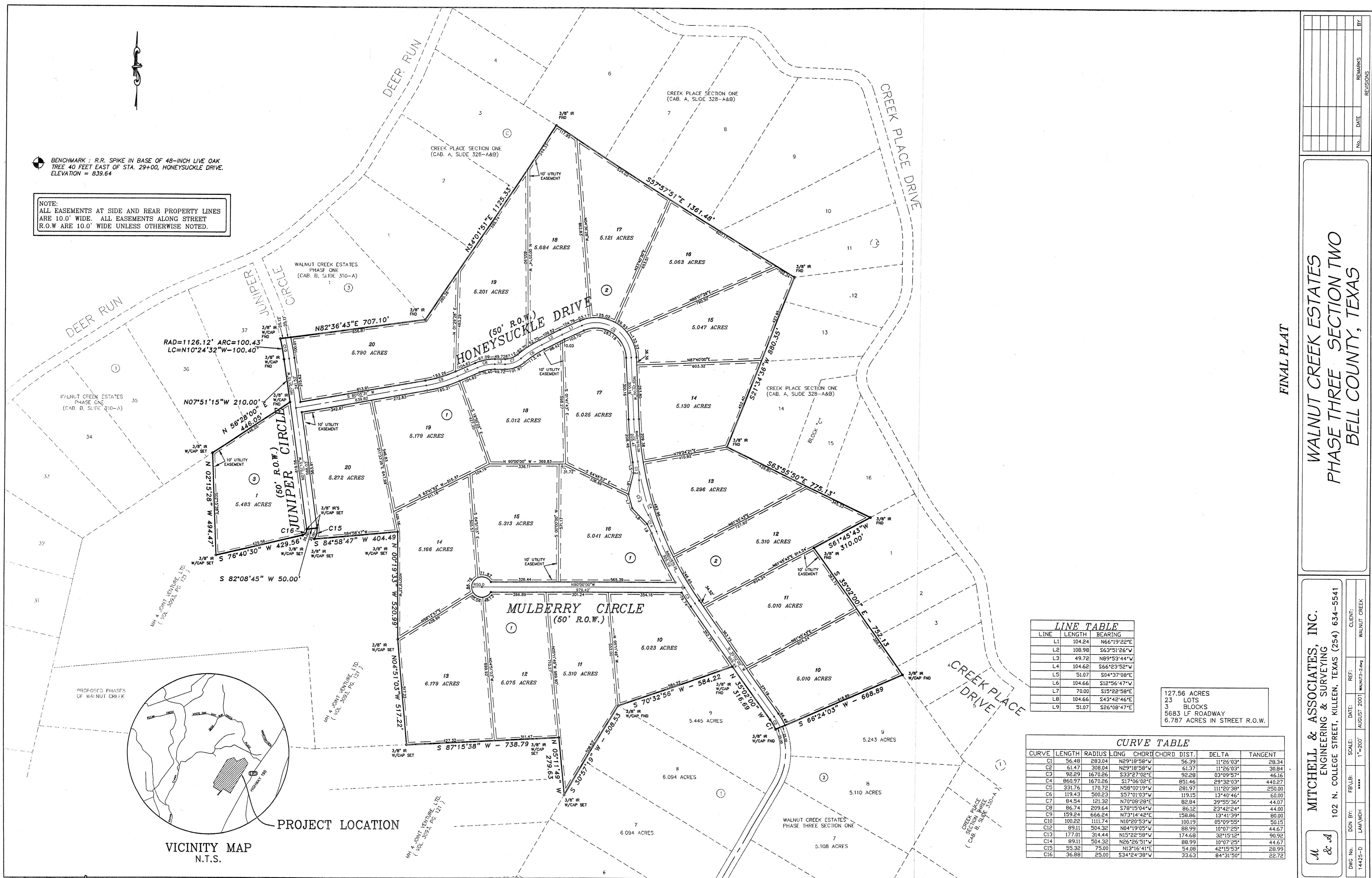


BENCHMARK: R.R. SPIKE IN BASE OF 48-INCH LIVE OAK TREE 40 FEET EAST OF STA. 29+00, HONEYSUCKLE DRIVE. ELEVATION = 839.64

NOTE:
ALL EASEMENTS AT SIDE AND REAR PROPERTY LINES ARE 10.0' WIDE. ALL EASEMENTS ALONG STREET R.O.W ARE 10.0' WIDE UNLESS OTHERWISE NOTED.



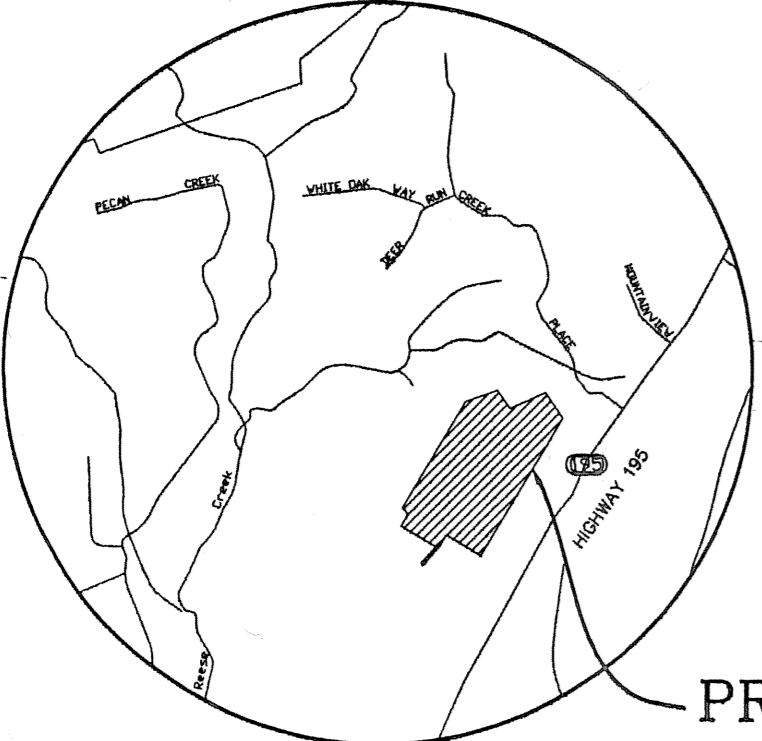
LINE TABLE

LINE	LENGTH	BEARING
L1	104.24	N66°19'22"E
L2	108.98	S63°51'26"W
L3	49.72	N89°53'44"W
L4	104.62	S66°23'52"W
L5	51.07	S84°37'08"E
L6	104.66	S12°56'47"W
L7	70.00	S15°22'58"E
L8	104.66	S43°42'46"E
L9	51.07	S26°08'47"E

127.56 ACRES
23 LOTS
3 BLOCKS
5683 LF ROADWAY
6.787 ACRES IN STREET R.O.W.

CURVE TABLE

CURVE	LENGTH	RADIUS	LONG CHORD	CHORD DIST.	DELTA	TANGENT
C1	56.48	283.04	N29°18'58"W	56.39	11°28'03"	28.34
C2	61.47	308.04	N29°18'58"W	61.37	11°28'03"	30.84
C3	92.29	1670.26	S33°27'02"E	92.28	03°09'57"	46.16
C4	860.97	1670.26	S17°06'02"E	851.46	29°32'03"	440.27
C5	331.76	170.72	N58°00'19"W	281.97	111°20'38"	250.00
C6	119.43	590.23	S57°01'03"W	119.15	13°40'46"	60.00
C7	84.54	121.32	N70°08'28"E	82.84	39°55'36"	44.07
C8	86.74	209.64	S78°15'04"W	85.12	23°42'24"	44.00
C9	159.24	666.24	N73°14'42"E	158.86	13°11'39"	80.00
C10	100.22	1111.74	N10°20'53"W	100.19	05°09'55"	50.15
C12	89.11	504.32	N04°19'05"W	88.99	10°07'25"	44.67
C13	177.01	314.44	N15°22'58"W	174.68	32°15'12"	90.92
C14	89.11	504.32	N26°26'51"W	88.99	10°07'25"	44.67
C15	55.32	75.00	N13°16'41"E	54.08	42°15'53"	28.99
C16	36.88	25.00	S34°24'38"W	33.63	84°31'50"	22.72



FINAL PLAT

WALNUT CREEK ESTATES
PHASE THREE SECTION TWO
BELL COUNTY, TEXAS

MITCHELL & ASSOCIATES, INC.
ENGINEERING & SURVEYING
102 N. COLLEGE STREET, KILLEEN, TEXAS (254) 634-5541

DWG No.	14425-D	DATE	AUGUST 2001	CLIENT	WALNUT CREEK
DATE	11/2001	SCALE	1"=200'	REF.	WALNUT3-2.dwg
DESIGNED BY	LAN/MDH	DRAWN BY	***		

No.	DATE	REVISIONS	BY