

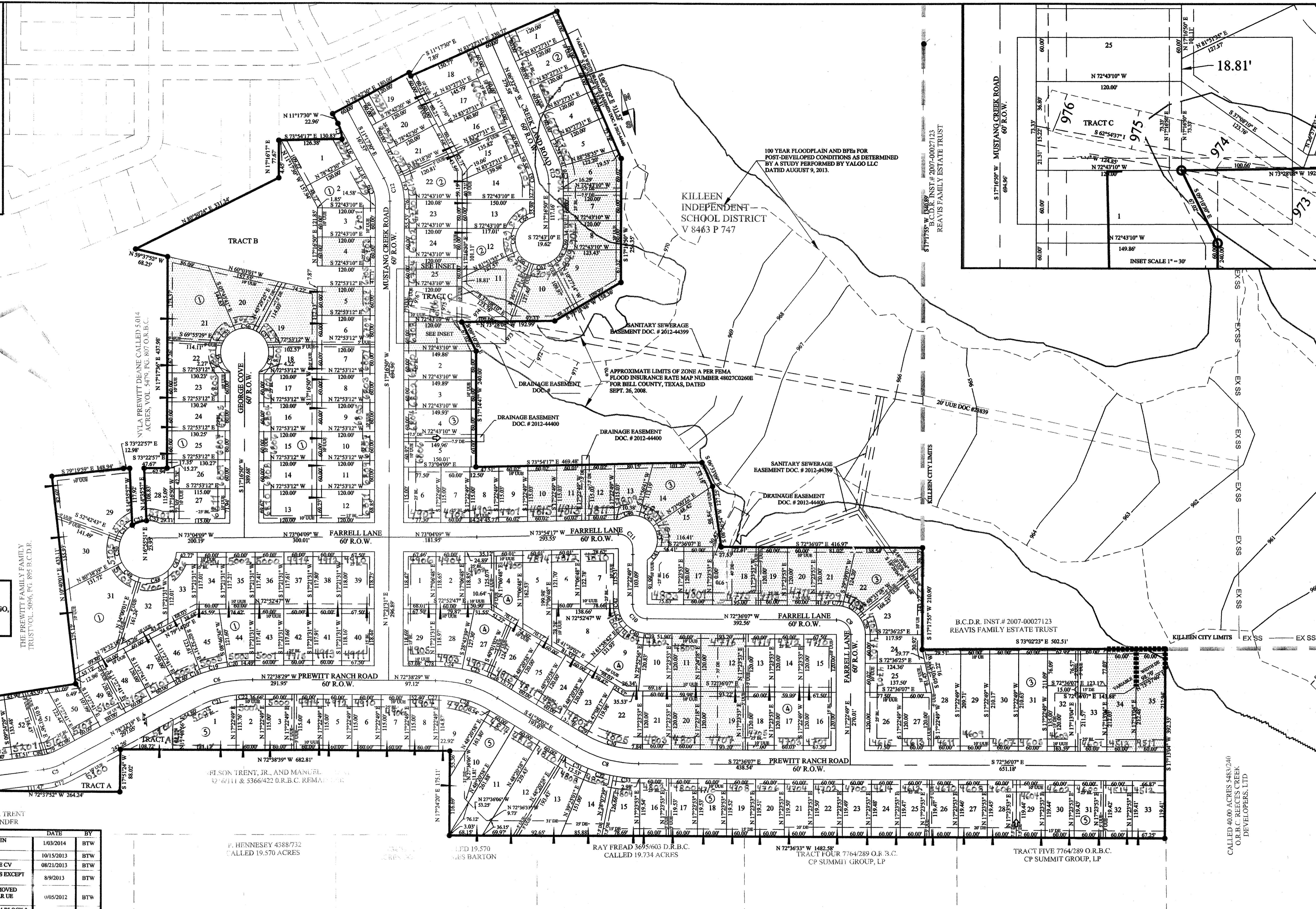
LEGEND

- A.E. ACCESS EASEMENT
- BM BENCHMARK
- DA DRAINAGE AREA
- D.E. DRAINAGE EASEMENT
- ELEV. ELEVATION
- N.T.S. NOT TO SCALE
- NO. NUMBER
- RE REFERENCE
- REV. REVISION
- TBM TEMPORARY BENCH MARK
- TY. TYPICAL
- U.U.E. UNDERGROUND UTILITY EASEMENT
- U.E. UTILITY EASEMENT
- F.F.E. FINISHED FLOOR ELEVATION
- L.F.E. LOWEST FLOOR ELEVATION
- IRON ROD FOUND
- IRON ROD SET
- CHANGE IN BEARING
- SEE NOTE 2
- BLOCK NUMBERS
- LOTS WITH MIN LFE (SEE TABLE)
- SEE POSITIVE OVERFLOW SWALE CROSS SECTION
- NO FENCES ALLOWED (SEE LOTS 34 & 35 BLOCK 3)

LOT #	BLOCK #	BASE FLOOD ELEVATION	MIN REQUIRED LFE
6	2	970.94	972.94
7	2	970.82	972.92
8	2	970.85	972.85
10	2	973.67	975.67
11	2	974.88	976.88
1	3	975.71	977.71
35	3	983.62	985.62

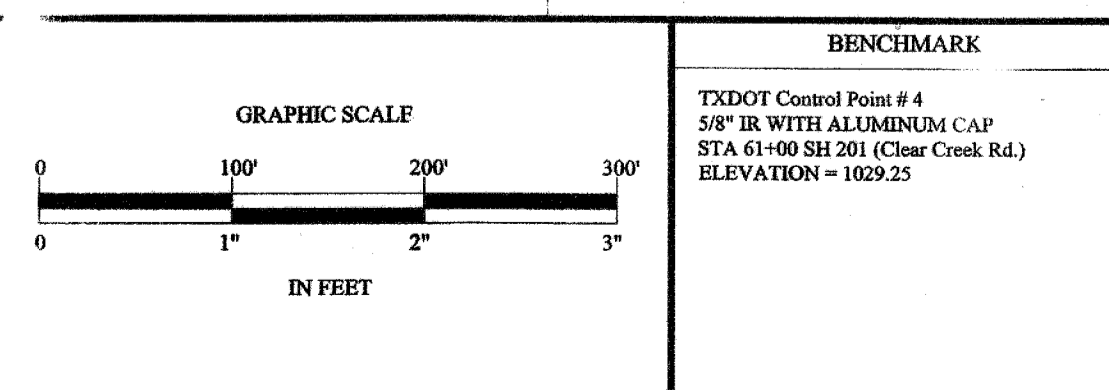
LOT #	BLOCK #	BASE FLOOD ELEVATION	MIN REQUIRED LFE
4	1	977.17	979.17
5	1	977.17	979.17
19	1	977.81	979.81
20	1	981.28	983.28
21	1	981.62	983.62
6	2	970.94	972.94
7	2	970.82	972.92
8	2	970.85	972.85
9	2	970.83	972.83
10	2	973.67	975.67
11	2	974.88	976.88
25	2	977.70	979.70
1	3	975.71	977.71
10	3	971.17	973.17
11	3	970.85	972.85
12	3	970.70	972.70
13	3	970.14	972.14
4	3	989.52	991.52
1	3	989.48	991.48
17	3	970.20	972.20
18	3	970.20	972.20
20	3	970.20	972.20
21	3	970.20	972.20
22	3	970.20	972.20
34	3	983.70	985.70
35	3	983.62	985.62
11	4	974.10	976.10
12	4	974.10	976.10
19	4	974.24	976.24
20	4	974.24	976.24

+BASE FLOOD ELEVATIONS IN THESE TABLES WERE DETERMINED IN A DRAINAGE ANALYSIS PERFORMED BY YALGO, LLC AND PRESENTED TO THE CITY OF KILLEEN IN A REPORT DATED AUGUST 9, 2013.



REV.	DESCRIPTION	DATE	BY
8	ADDED EASEMENT BETWEEN LOTS 3 AND 4 BLOCK 3 AND SWALE BETWEEN LOTS 4 AND 5 BLOCK 3	1/03/2014	BTW
7	REVISED DRAINAGE EASEMENT ON LOTS 32-35 BLOCK 3	10/15/2013	BTW
6	RENAMED REEM DR TO PREWITT RANCH RD AND KAREEM CV TO GEORGE CV	08/21/2013	BTW
5	REMOVED OVERFLOW SWALE ARROWS FROM ALL DRAINAGE EASEMENTS EXCEPT BETWEEN LOTS 28 AND 29 BLOCK 5	8/9/2013	BTW
4	REMOVED LOT 26 BLOCK 2, ADDED INSET FOR EASEMENTS ON TRACT C, MOVED DRAINAGE EASEMENT BETWEEN LOTS 33 AND 34 BLOCK 3, REMOVED REAR U/E FROM LOT 29 BLOCK 3, REVISED EASEMENT ON LOT 2 BLOCK 3, REMOVED U/LB AT END OF REEM DRIVE, MODIFIED EASEMENT ON LOT 34 BLOCK 3, REVISED A.L. DRAINAGE EASEMENTS TO BE 15' WIDE, MOVED DRAINAGE EASEMENT BETWEEN LOTS 4 AND 5 BLOCK 3, ADDED INSET FOR 35' DRAINAGE EASEMENT ON LOT 26 BLOCK 2, AL. U/L AND U/E AT FRONT OF LOT 26 BLOCK 2, REVISED 1' EAR DR ON BLOCK 5, LOTS 9-33	0/05/2012	BTW
3	REVISED LAYOUT TO MEET INTERSECTION REQUIREMENTS. ADDED LOT 26 BLOCK 2 AND EXTENDED KATY CREEK, ADDED REAR 10' U/E TO ALL LOTS, ADDED DIMENSIONS FOR EASEMENTS ON LOT 26 BLOCK 2, UPDATE CITY LIMITS LINE, RENAMED NYLA DRIVE TO REEM DRIVE.		BTW
2	REVISED LAYOUT TO MEET INTERSECTION REQUIREMENTS. ADDED LOT 26 BLOCK 2 AND EXTENDED KATY CREEK, ADDED REAR 10' U/E TO ALL LOTS, ADDED DIMENSIONS FOR EASEMENTS ON LOT 26 BLOCK 2, UPDATE CITY LIMITS LINE, RENAMED NYLA DRIVE TO REEM DRIVE.		BTW
1	ORIGINAL RELEASE	7/24/2012	BTW

PROJECT INFORMATION
TOTAL SIZE: 46.71 ACRES
TOTAL BLOCKS: 5
TOTAL LOTS: 179
TOTAL TRACTS: 3



FINAL PLAT OF THE LANDING AT CLEAR CREEK PHASE III CITY OF KILLEEN, BELL COUNTY, TEXAS

VERA & ASSOCIATES, L.C. 3707 SIERRA DR GEORGETOWN, TX 78628 PH (254) 953-5353 FX (254) 864-9604 TXAS REGISTERED SURVEYING FIRM #10137400	Yalgo, LLC 3000 Illinois Ave., Suite 100 Killeen, TX 76543 PH (254) 953-5353 FX (254) 953-0032 Texas Registered Engineering Firm F-10264	SHEET 2 OF 2
--	--	-------------------------------------