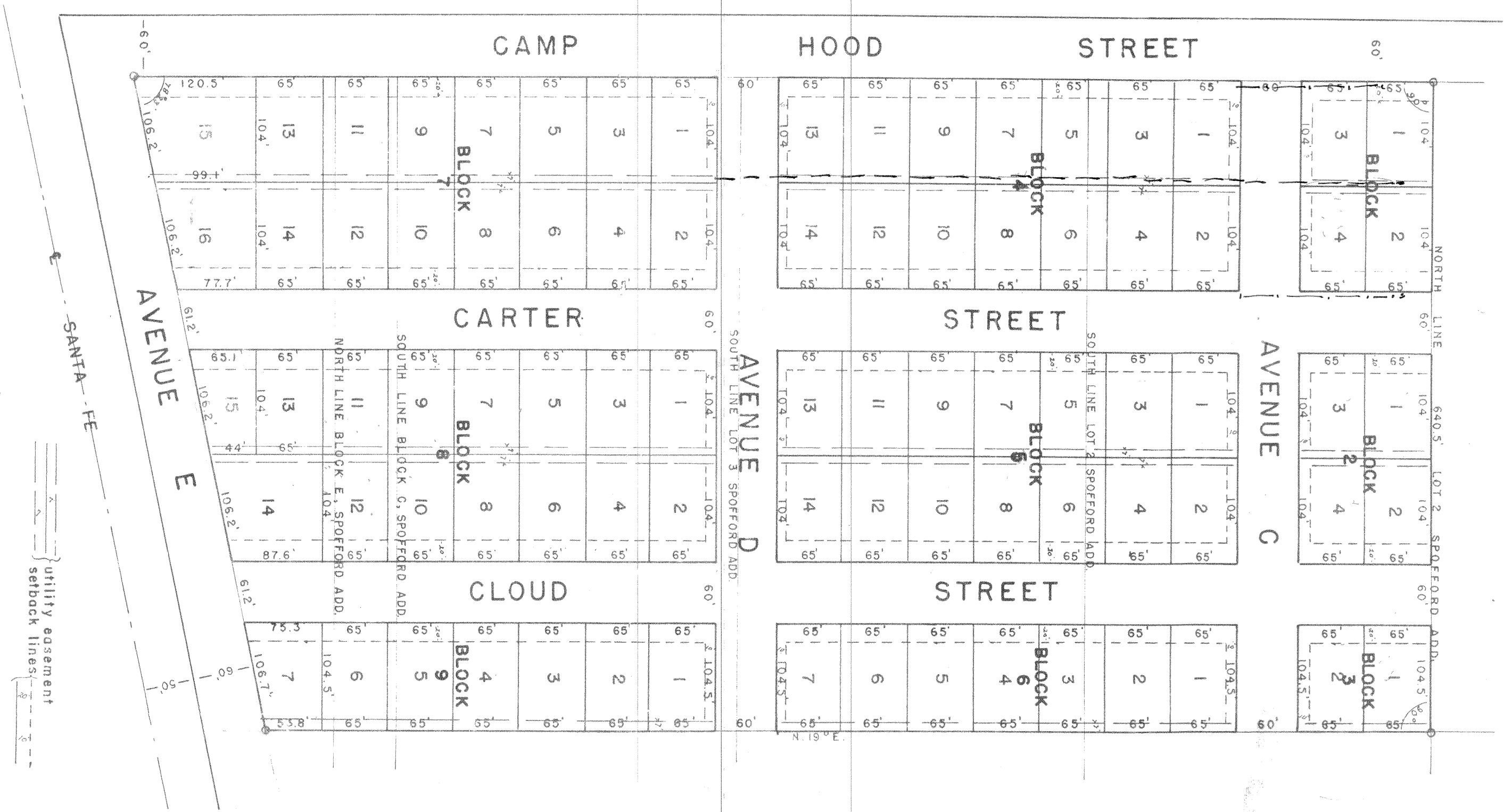


CAMP HOOD ARMY RESERVATION



SUNSET ADDITION

KILLEEN, TEXAS

Developed by John F. Norman and wife, Iso Norman, out of Lots 2 and 3, Block C, Spofford Subdivision (see Vol. 72, Page 168 for plat, Vol. 341, Page 143, Deed Records, Bell County, for deed) and Lot 4, Block C, Spofford Subdivision, (see Vol. 310, Page 442, Deed Records) and Lot 1, Block E, Spofford Subdivision, (see Vol. 311, Page 384, Deed Records).

SURVEY BY FRED WILLIAMSON & CO, TEMPLE, TEXAS, JANUARY, 1949