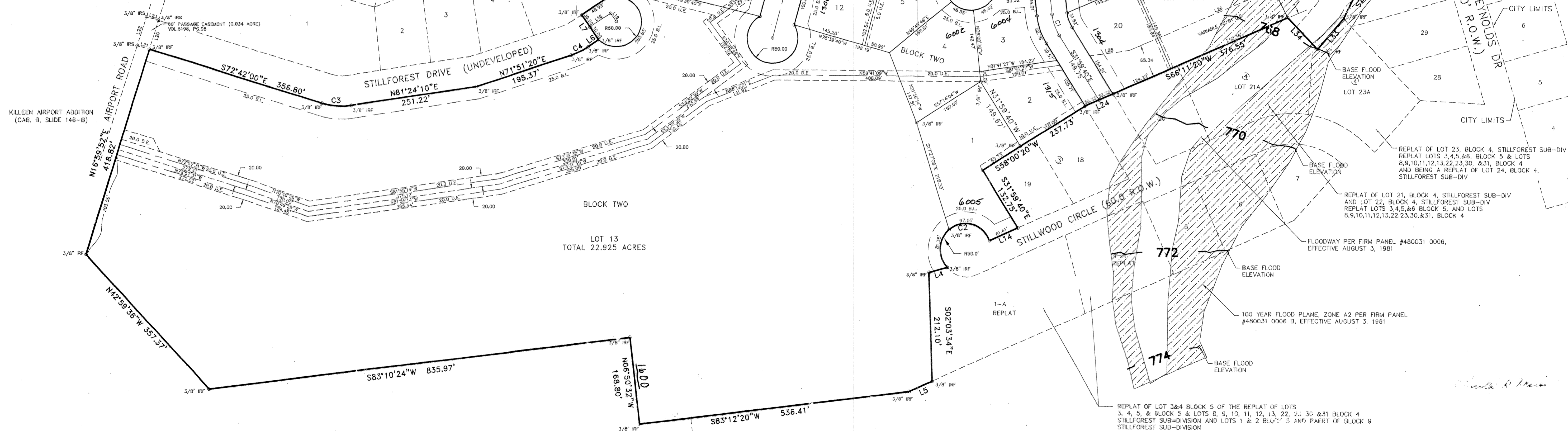


BURKE, DONALD G.  
REVOCABLE TRUST & BURKE,  
JOHN WILLIAM  
VOL. 4440, PG. 301

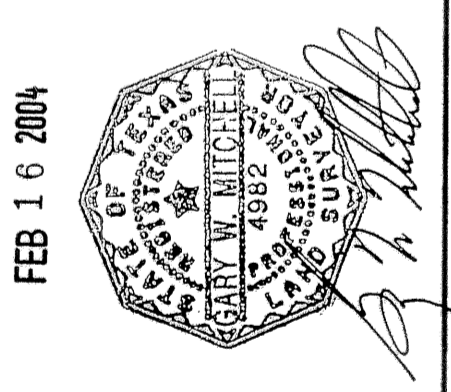
LINE	LENGTH	BEARING
L1	30.23	S14°28'39"W
L2	104.84	S25°24'22"W
L4	37.84	S74°06'07"W
L5	49.01	S66°08'39"W
L6	25.21	N85°28'00"E
L7	80.00	N34°34'00"W
L8	14.16	S13°24'10"W
L10	20.00	N14°33'50"E
L11	74.11	S06°05'36"E
L13	5.00	S75°39'40"E
L14	81.41	S66°11'20"W
L16	40.00	N14°59'21"E
L17	20.00	S75°39'40"E
L18	48.99	N65°28'00"E
L19	20.00	N14°33'50"W
L20	80.00	S16°38'52"W
L21	25.22	N72°42'00"W
L22	60.00	N17°32'38"E
L23	24.65	S72°42'00"E
L24	60.86	S66°28'57"W
L25	78.74	N62°09'09"E
L26	389.02	N66°11'20"E
L27	147.37	N10°48'10"E
L28	99.26	N32°29'38"W
L29	57.43	N14°20'20"E
L30	80.59	S75°39'40"E
L31	75.11	S13°01'01"E
L32	106.62	S52°29'35"E
L33	79.23	S39°41'37"W
L34	85.91	N43°24'53"W

CURVE	LENGTH	RADIUS	LONG CHORD	CHORD DIST.	DELTA	TANGENT
C1	45.19	100.02	S19°02'42"E	44.81	25°53'22"	22.99
C2	178.40	50.00	S58°22'35"W	97.74	204°25'43"	230.98
C3	58.76	130.00	S85°38'59"E	58.26	25°53'60"	29.89
C4	37.26	130.00	N63°38'40"E	37.13	16°25'20"	18.76
C5	28.53	70.00	N44°34'39"E	28.37	21°42'50"	13.43
C6	21.24	70.00	N25°01'40"E	21.16	17°23'00"	10.70



NO.	DATE	REMARKS	BY
1	2-04-04	ADJUSTED LOTS/EASMENTS	LAM

STILLFOREST SUBDIVISION 2ND EXTENSION  
BEING A REPLAT OF LOTS 1, 2, 5, 9 AND 12, BLOCK 1, LOTS 1-17, BLOCK 3, LOTS 1-7 AND 14-19, BLOCK 4, PART OF BLOCK 6 AND ALL OF BLOCK 12, STILLFOREST SUB-DIV. LOTS 8-13 AND 31, BLOCK 4, STILLFOREST SUB-DIV. REPLAT OF LOTS 3, 4, 5 AND 6, BLOCK 5, AND LOTS 8, 9, 10, 11, 12, 13, 22, 23, 30 AND 31, BLOCK 4 AND PART OF STILLFOREST SUB-DIV. REPLAT OF LOTS 3, 4, 5 AND 6, BLOCK 5, AND LOTS 8, 9, 10, 11, 12, 13, 22, 23, 30 AND 31, BLOCK 4, STILLFOREST SUB-DIVISION, ABSTRACT NO. 980  
KILLEEN, BELL COUNTY, TEXAS



MITCHELL & ASSOCIATES, INC.  
ENGINEERING & SURVEYING  
102 N. COLLEGE STREET  
KILLEEN, TEXAS 76541  
PHONE: (254) 634-5541  
FAX: (254) 634-2141

SCALE: LOTS-41, BLOCKS-2, 1"=100'  
DATE: 10/2003  
DRAWN BY: ML/LAM  
DWG NO: 03-562-D

AREA: 49.130 ACRES  
BLOCKS: 2  
LOTS: 7/0