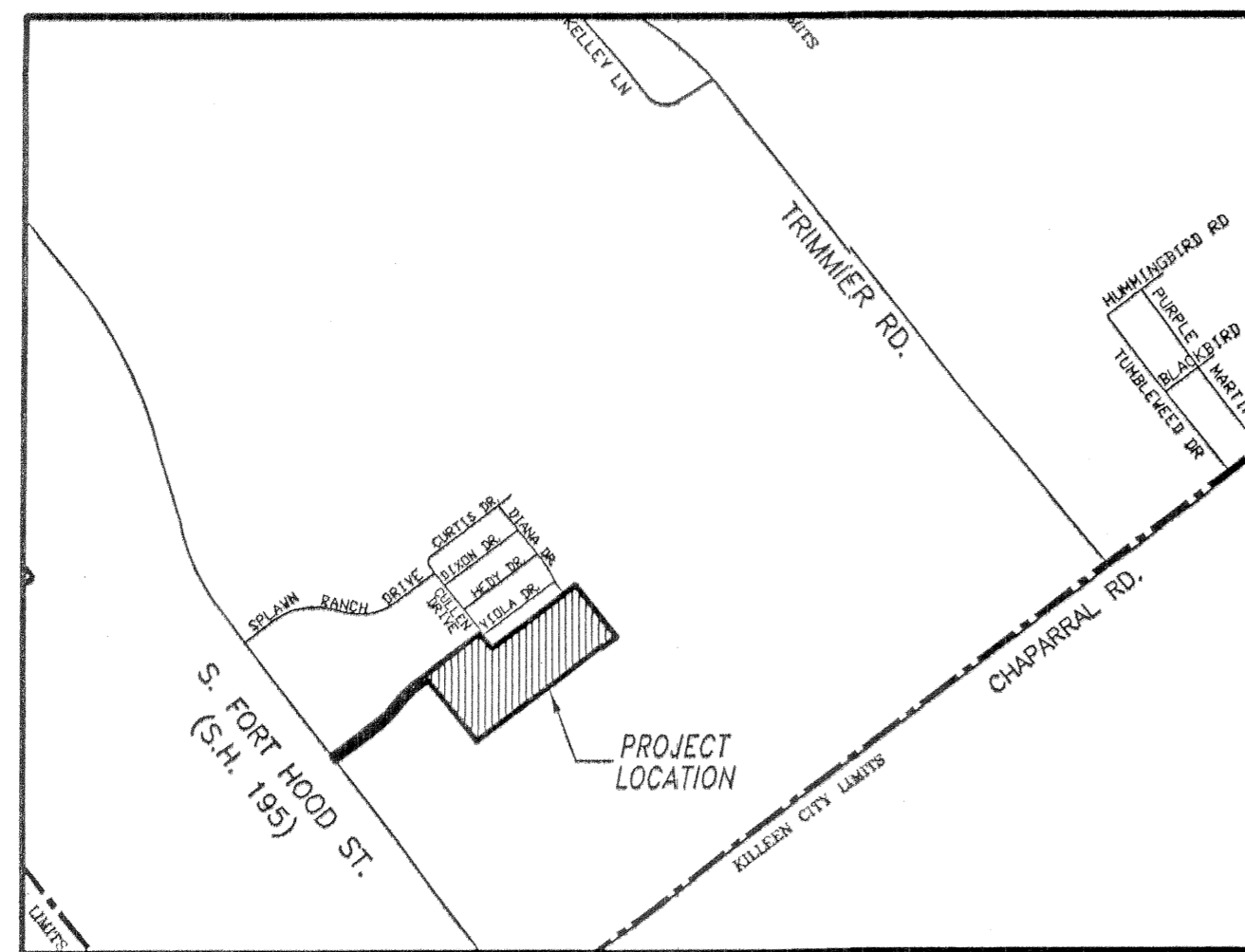


Monument Note: Unless otherwise noted hereon, all subdivision perimeter corner monuments are 3/8" iron rods with orange caps marked "KILLEEN E&S".

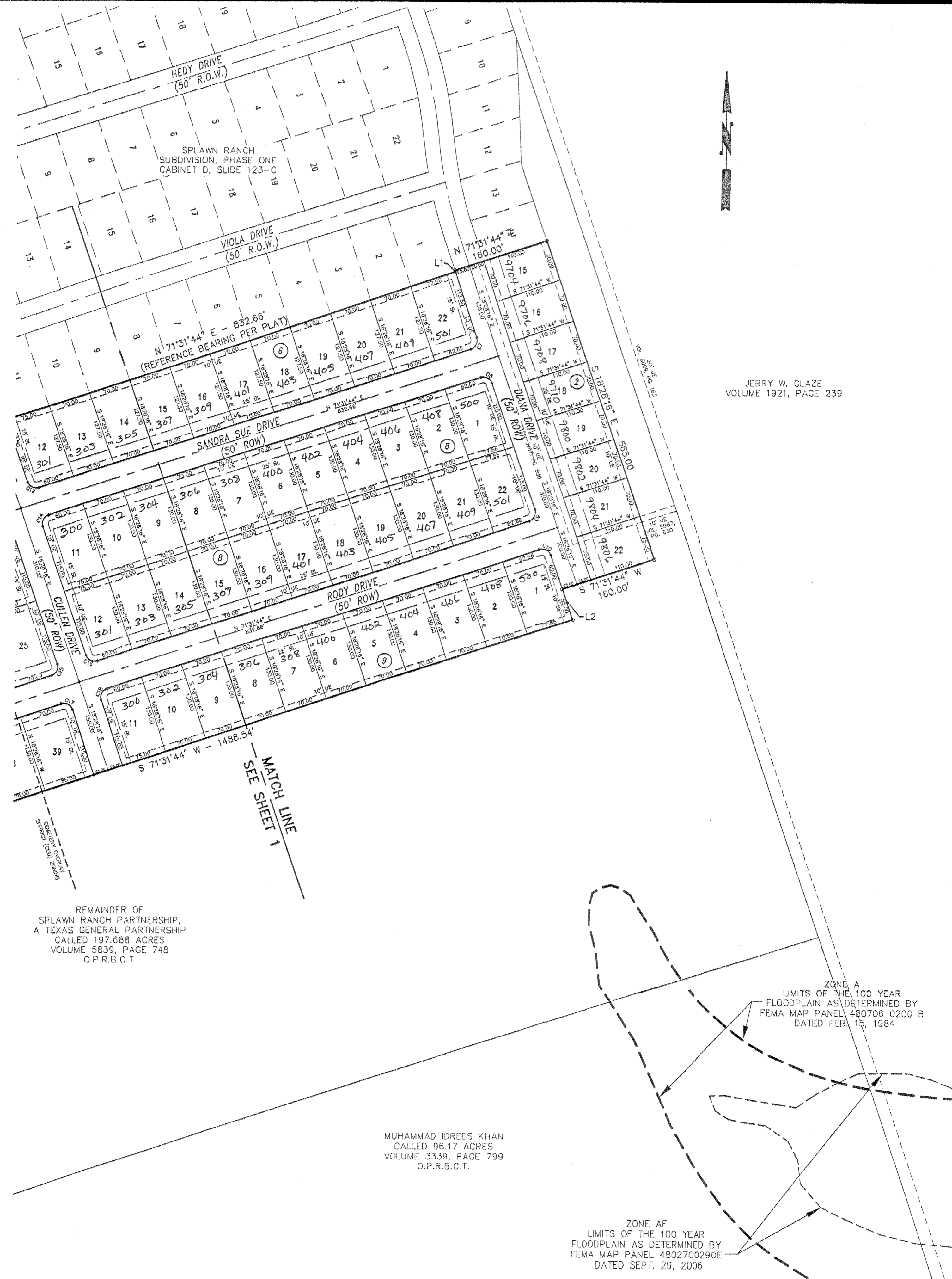
Bearing Note: The Basis of Bearing for this plat is the South line of Splawn Ranch Subdivision, Phase One.

LINE	LENGTH	BEARING
L1	2.50	N 18°28'16" W
L2	55.00	S 18°28'16" E
L3	60.00	N 18°48'03" W

CURVE	DELTA	RADIUS	ARC	TANGENT	BEARING	CHORD
C1	18°03'00"	720.00	226.82	114.36	N 62°30'14" E	225.89
C2	18°03'00"	780.00	245.72	123.89	N 62°30'14" E	244.71
C3	18°03'00"	720.00	226.82	114.36	S 62°30'14" W	225.89
C4	18°03'00"	780.00	245.72	123.89	S 62°30'14" W	244.71
C5	18°03'00"	750.00	236.27	119.12	N 62°30'14" E	235.30
C6	18°03'00"	750.00	236.27	119.12	S 62°30'14" W	235.30
C7	90°00'00"	15.00	23.56	15.00	N 26°31'44" E	21.21
C8	90°00'00"	15.00	23.56	15.00	N 63°28'16" W	21.21
C9	90°00'00"	15.00	23.56	15.00	N 26°31'44" E	21.21
C10	90°00'00"	15.00	23.56	15.00	N 63°28'16" W	21.21
C11	90°00'00"	15.00	23.56	15.00	N 26°31'44" E	21.21
C12	90°00'00"	15.00	23.56	15.00	S 63°28'16" E	21.21
C13	90°00'00"	15.00	23.56	15.00	N 63°28'16" W	21.21
C14	90°00'00"	15.00	23.56	15.00	S 26°31'44" W	21.21
C15	90°00'00"	15.00	23.56	15.00	N 26°31'44" E	21.21
C16	90°00'00"	15.00	23.56	15.00	S 63°28'16" E	21.21
C17	90°00'00"	15.00	23.56	15.00	N 63°28'16" W	21.21
C18	90°00'00"	15.00	23.56	15.00	S 26°31'44" W	21.21
C19	90°00'00"	15.00	23.56	15.00	N 63°28'16" W	21.21



VICINITY MAP
N.T.S.



JERRY W. GLAZE
VOLUME 1921, PAGE 239

REMAINDER OF
SPLAWN RANCH PARTNERSHIP,
A TEXAS GENERAL PARTNERSHIP
CALLED 197.688 ACRES
VOLUME 5839, PAGE 748
O.P.R.B.C.T.

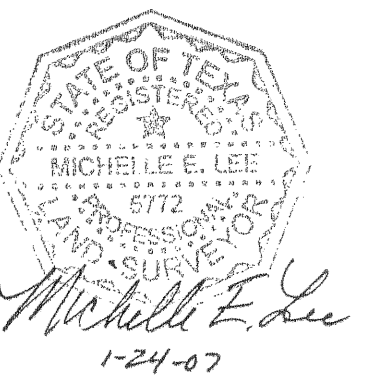
MUHAMMAD IDREES KHAN
CALLED 96.17 ACRES
VOLUME 3339, PAGE 799
O.P.R.B.C.T.

ZONE AE
LIMITS OF THE 100 YEAR
FLOODPLAIN AS DETERMINED BY
FEMA MAP PANEL 48027C0290E
DATED SEPT. 29, 2006

ZONE A
LIMITS OF THE 100 YEAR
FLOODPLAIN AS DETERMINED BY
FEMA MAP PANEL 480706 0200 B
DATED FEB. 15, 1984

**KILLEEN ENGINEERING
& SURVEYING, LTD.**
2901 E. Stan Schlueter Loop
Killeen, Texas 76542
(254) 526-3981 (254) 526-4351 Fax

FINAL PLAT
SPLAWN RANCH SUBDIVISION
PHASE TWO
KILLEEN, BELL COUNTY, TEXAS



Project No.:	2006-072
Acres:	27.296
No. of Lots:	91
Scale:	1" = 100'
Date:	12/08/06
Design By:	MEL/FJP
Sheet No.:	2 OF 2