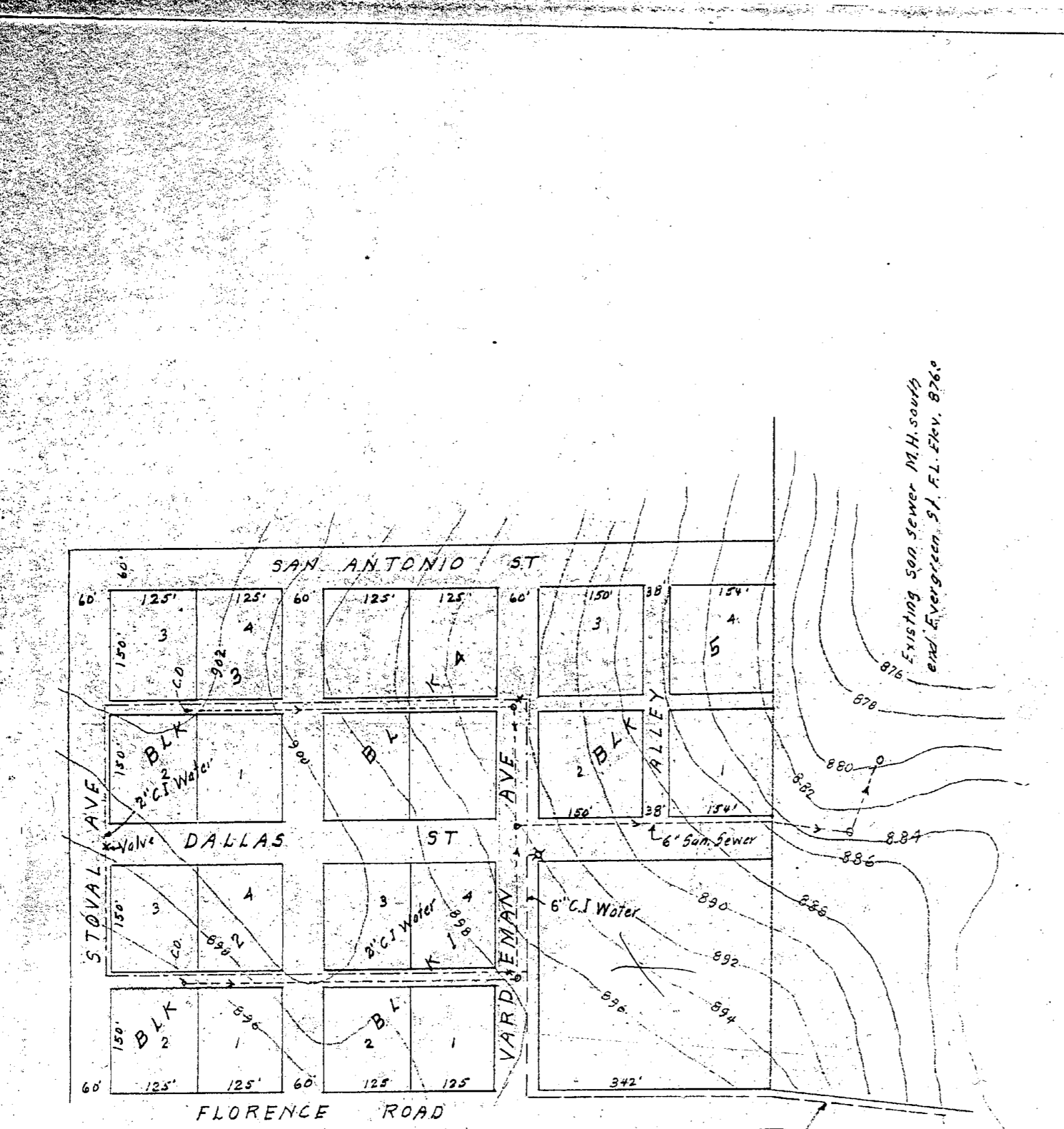


A
156D

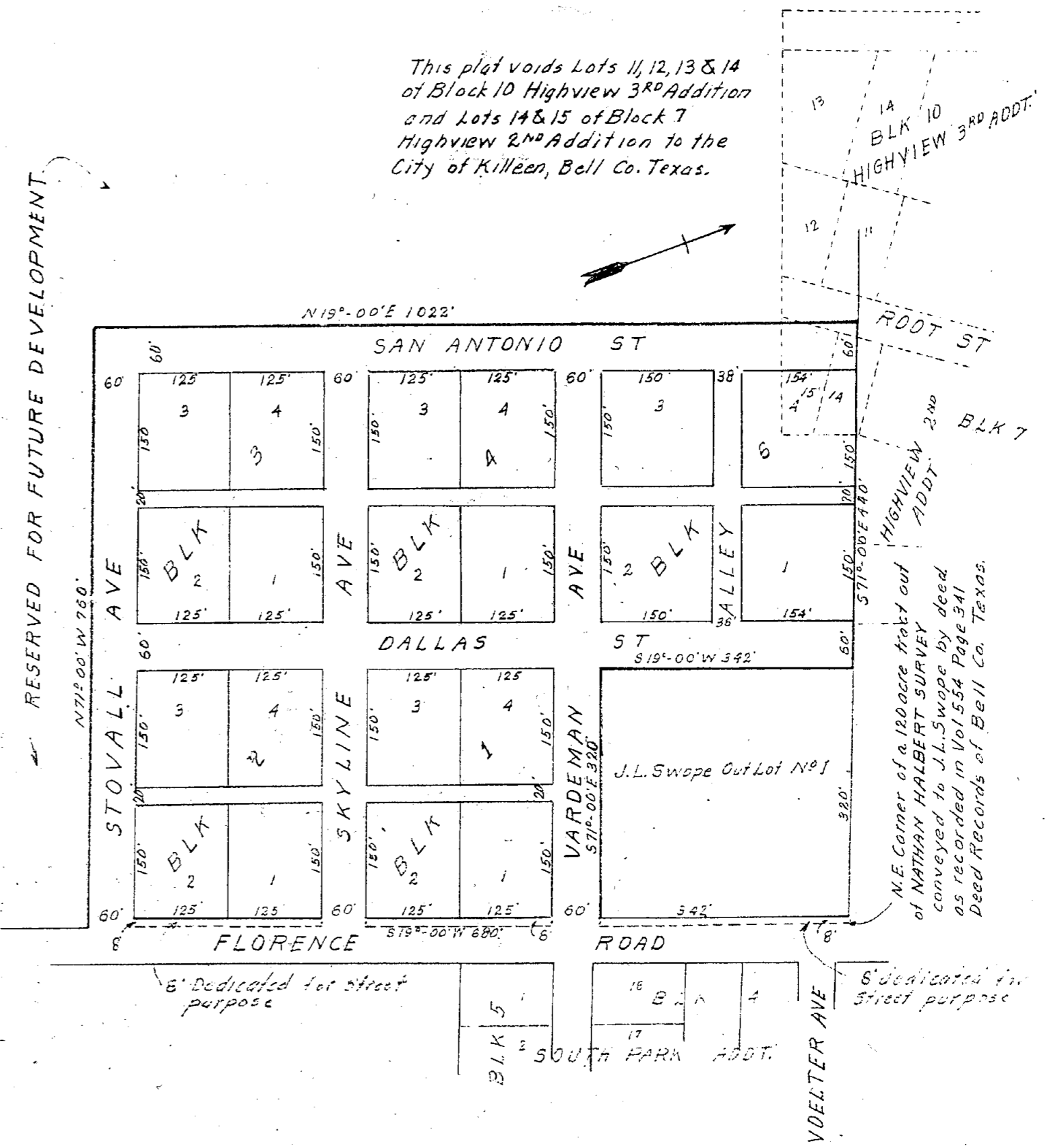


6" C.I. Water to connect to 6" line South end Highview 2nd Addition on Florence Rd.

SKYLINE TERRACE
FIRST ADDITION
UTILITY LAYOUT
All paving, water lines and sewer lines shall conform to ordinances and specifications of the City of Killeen

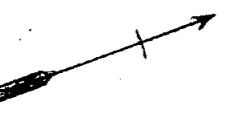
- 6" V.C. San. Sewer
- 2" C.I. Water line
- 6" C.I. Water line

SKYLINE TERRACE ADDN CITY OF KILLEEN
NO BLOCK 5 ON PLAT



RESERVED FOR FUTURE DEVELOPMENT

This plat voids Lots 11, 12, 13 & 14 of Block 10 Highview 3rd Addition and Lots 14 & 15 of Block 7 Highview 2nd Addition to the City of Killeen, Bell Co. Texas.



SKYLINE TERRACE
FIRST ADDITION
TO THE
CITY OF KILLEEN
BELL CO. TEXAS
Scale 1"=100' - May 26, 1959

I, M.A. Moss a registered professional engineer of the State of Texas do certify that the above plat was made from a survey of the site and is correct to the best of my belief and knowledge
M.A. Moss