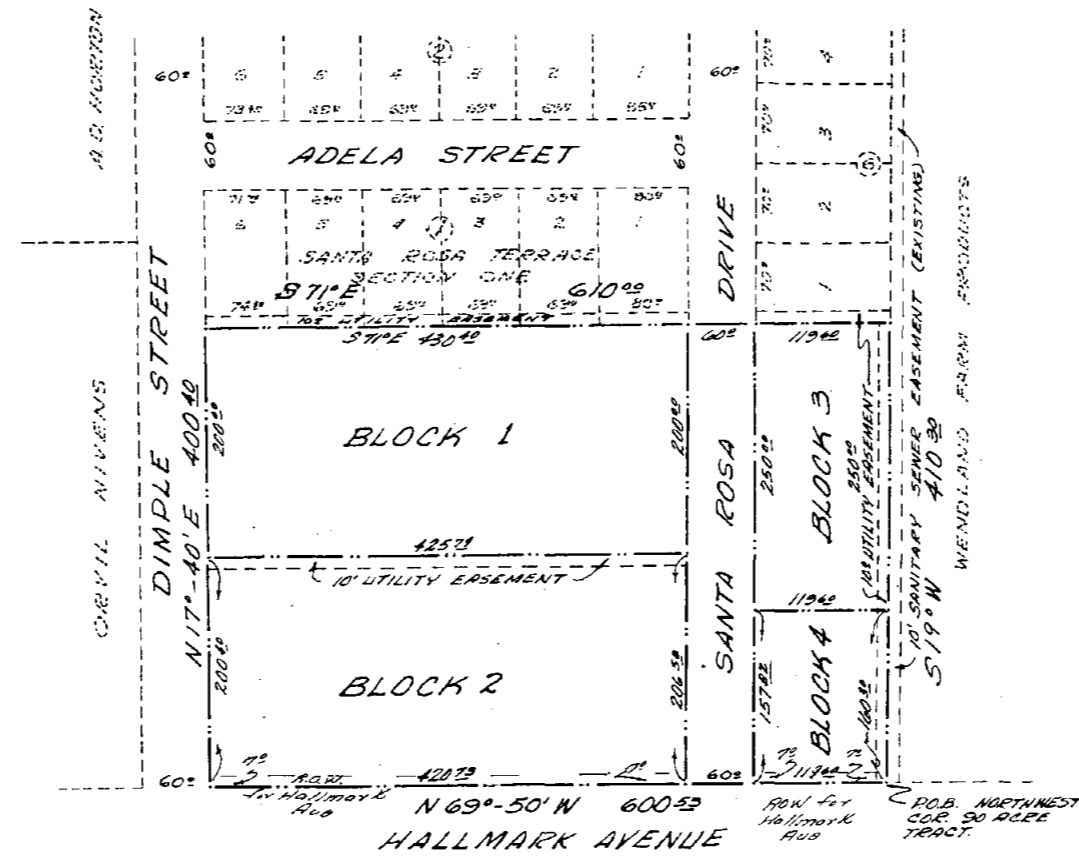


A  
2790



SANTA ROSA TERRACE ADDITION SECTION 2

APPROVED: CITY PLANNING COMMISSION  
Date: 27 July 1964 Chairman: *Carl Meier*

APPROVED BY CITY COUNCIL  
DATE: 27 July 1964 MAYOR: *P. B. ...*

ATTEST: *J. H. ...*  
CITY SECRETARY

B & L ENGINEERING CO. INC.	
KILLEEN, TEXAS	
PABLO FLORES	
SANTA ROSA TERRACE ADDN. SEC. 2	
SCALE: 1"=100'	APPROVED BY: <i>[Signature]</i>
DATE: 7-20-64	DRAWN BY: <i>[Signature]</i>
PLOT PLAN	
DESIGNED BY: <i>[Signature]</i>	

AND ALL MEN BY THESE PRESENTS:  
That I, JAMES D. LEE  
do hereby certify that I prepared this plat  
from an aerial and accurate survey of the land  
and that the corner monuments of the same were  
properly placed under my personal supervision,  
in accordance with the Subdivision regulations  
of the City of Killeen, Texas.  
*[Signature]*  
Surveyor, Texas (No. 5) 1961



RE: REACTION VOL 906 PAGE 409