

Note: Unless otherwise noted hereon, all subdivision perimeter corner monuments are 3/8" iron rods with orange caps marked "KILLEEN E&S".

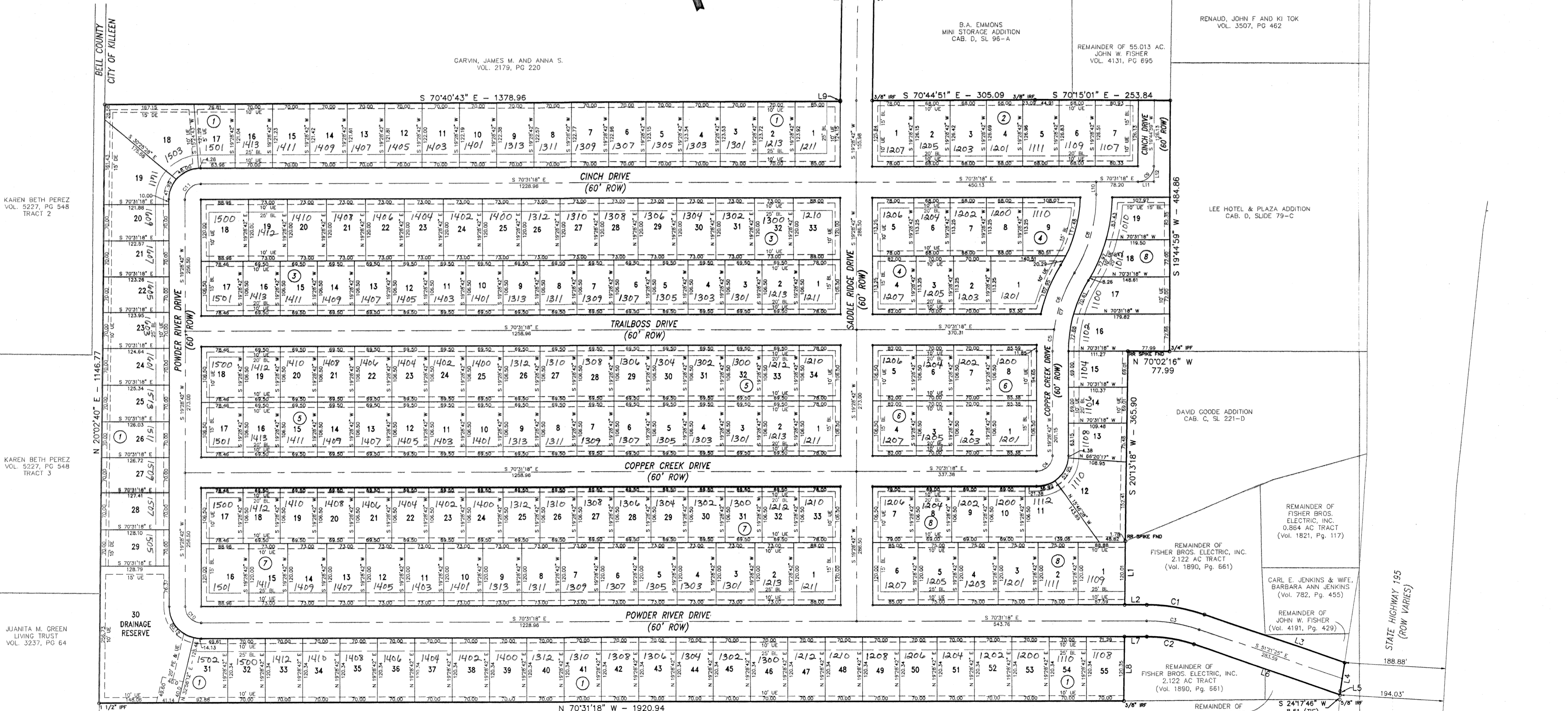
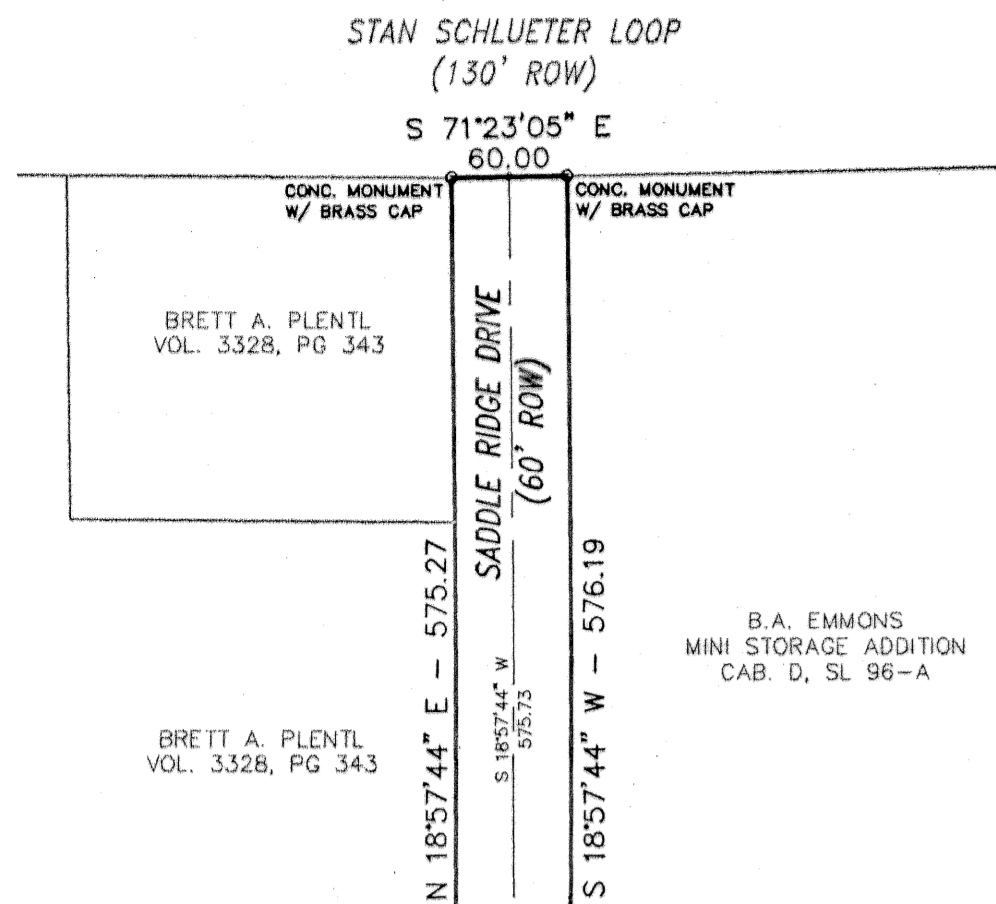
Utility Note: All Utilities within the easement along the rear of Lots 17-30, Block 1 shall be underground & have no above ground accessories.

CURVE	DELTA	RADIUS	ARC	TANGENT	BEARING	CHORD
C1	19°09'53"	330.00	110.38	55.71	S 60°56'21" E	109.87
C2	19°09'53"	270.00	90.31	45.58	N 60°56'21" W	89.89
C3	19°09'53"	300.00	100.35	50.65	N 60°56'21" W	99.58
C4	90°00'00"	30.00	47.12	30.00	N 64°28'42" E	42.43
C5	80°10'09"	300.00	41.99	21.03	S 23°29'17" E	41.95
C6	22°25'50"	300.00	117.45	59.48	S 38°42'47" W	116.70
C7	30°27'00"	300.00	159.44	81.65	S 34°42'12" W	157.57
C8	30°27'00"	300.00	159.44	81.65	N 34°42'12" E	157.57
C9	89°43'43"	30.00	46.98	29.86	N 64°36'51" E	42.33
C10	90°00'00"	30.00	47.12	30.00	S 25°31'18" E	42.43
C11	90°00'00"	30.00	47.12	30.00	S 64°28'42" W	42.43

LINE	LENGTH	BEARING
L1	121.79	S 20°05'39" W
L2	41.18	S 70°31'18" E
L3	278.08	S 51°21'25" E
L4	54.17	S 28°15'10" W
L5	6.93	S 24°17'46" W
L6	289.57	N 51°21'25" W
L7	41.82	N 70°31'18" W
L8	120.35	S 20°05'39" W
L9	1.97	N 19°28'42" E
L10	24.28	S 19°28'42" W
L11	29.86	S 70°31'18" E
L12	29.86	S 19°44'59" W

SEE MATCHLINE LEFT

SEE MATCHLINE RIGHT



KAREN BETH PEREZ VOL. 5227, PG 548 TRACT 2

KAREN BETH PEREZ VOL. 5227, PG 548 TRACT 3

JUANITA M. GREEN LIVING TRUST VOL. 3237, PG 64

CARVIN, JAMES M. AND ANNA S. VOL. 2179, PG 220

BEAR FAMILY PARTNERS, LTD. VOL. 3920, PG 198

JOHN W. FISHER (Vol. 4288, Pg. 225)

MARTINE CLAUDE BEVEL VOL. 3049, PG 511

FISHER BROS. ELECTRIC, INC. VOL. 1024, PG 338

FISHER BROS. ELECTRIC, INC. VOL. 2815, PG 422

KILLEEN LANDMARK MISSIONARY BAPTIST CHURCH VOL. 1118, PG 350

RENAUD, JOHN F AND KI TOK VOL. 3507, PG 462

REMAINDER OF 55.013 AC. JOHN W. FISHER VOL. 4131, PG 695

LEE HOTEL & PLAZA ADDITION CAB. D, SLIDE 79-C

S 19°44'59" W - 484.86

DAVID GOODE ADDITION CAB. C, SL 221-D

S 19°44'59" W - 365.90

REMAINDER OF FISHER BROS. ELECTRIC, INC. 0.884 AC TRACT (Vol. 1821, Pg. 117)

CARL E. JENKINS & WIFE, BARBARA ANN JENKINS (Vol. 782, Pg. 455)

REMAINDER OF JOHN W. FISHER (Vol. 4191, Pg. 429)

REMAINDER OF FISHER BROS. ELECTRIC, INC. 2.122 AC TRACT (Vol. 1890, Pg. 661)

REMAINDER OF FISHER BROS. ELECTRIC, INC. (Vol. 1890, Pg. 661)

REMAINDER OF JOHN W. FISHER (Vol. 4191, Pg. 429)

CHARLES R. BOGGS, SR., & WIFE, IRA BOGGS, AND LESE MOROS (Vol. 2007, Pg. 699)

FINAL PLAT

KILLEEN ENGINEERING & SURVEYING, LTD.

2901 E. Stan Schlueter Loop
Killeen, Texas 76542
(254) 526-3981 (254) 526-4351 Fax

SADDLERIDGE ESTATES
PHASE ONE
KILLEEN, BELL COUNTY, TEXAS



Project No.:	2004-074
Acres:	53.758
No. of Lots:	198
Scale:	1" = 100'
Date:	12/20/05
Design By:	MEL/BCC
Sheet No.:	2 OF 2