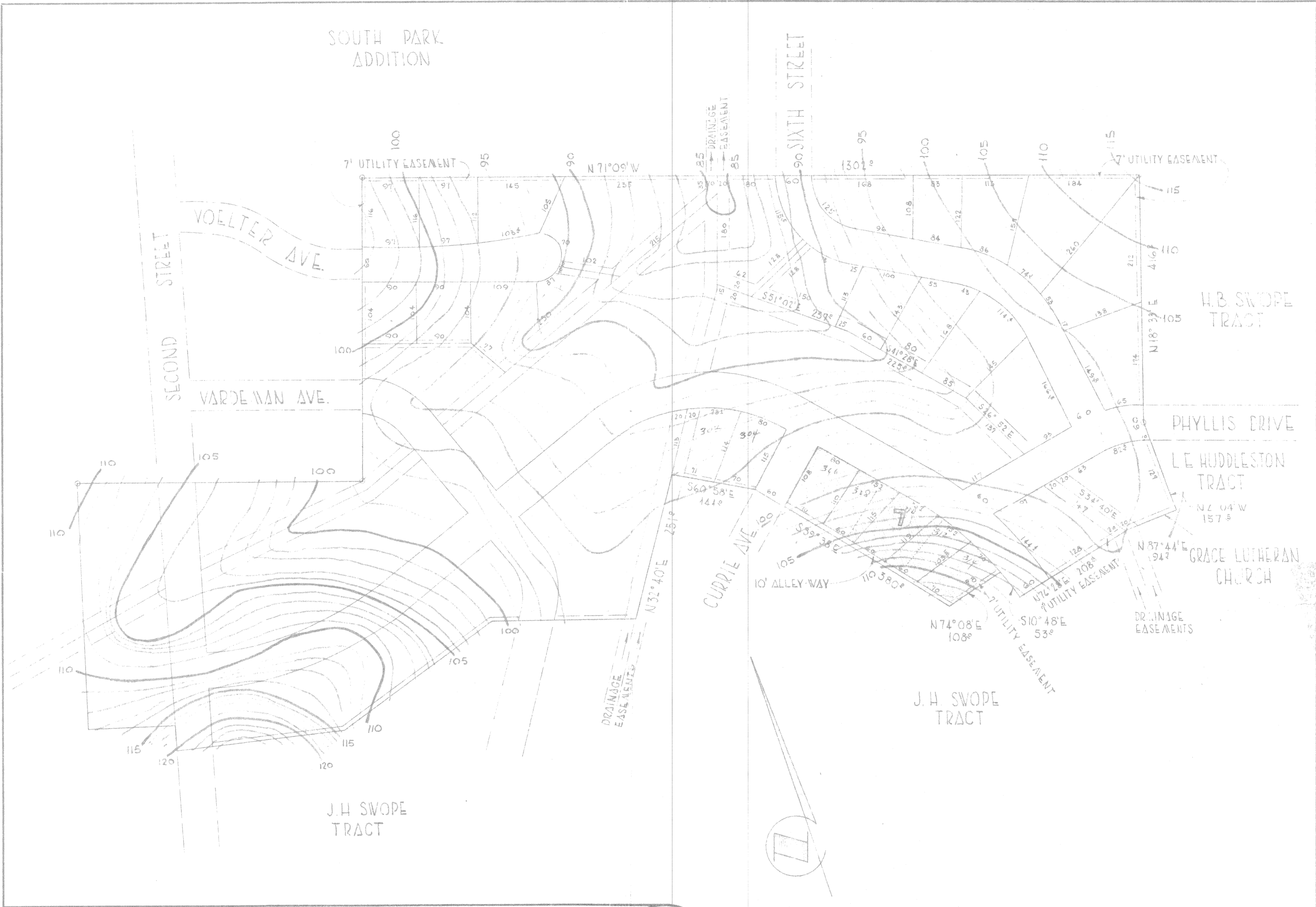


SOUTH PARK
ADDITION



FROM THE OFFICE OF
BELL & CLAYTON & ASSOCIATE
KILLEEN TEXAS

REVISION TO ROLLING ACRES
SUBDIVISION - FIRST SECTION

Scale 1" = 100' Date 11-14-59

Sheet No 1 of 1 Drawn by [Signature]