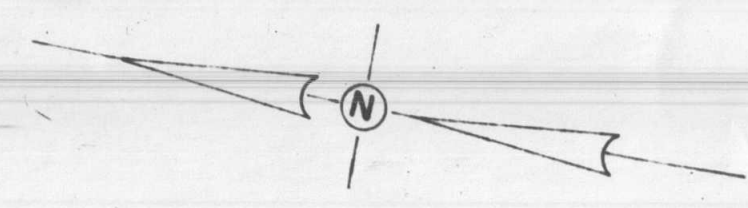
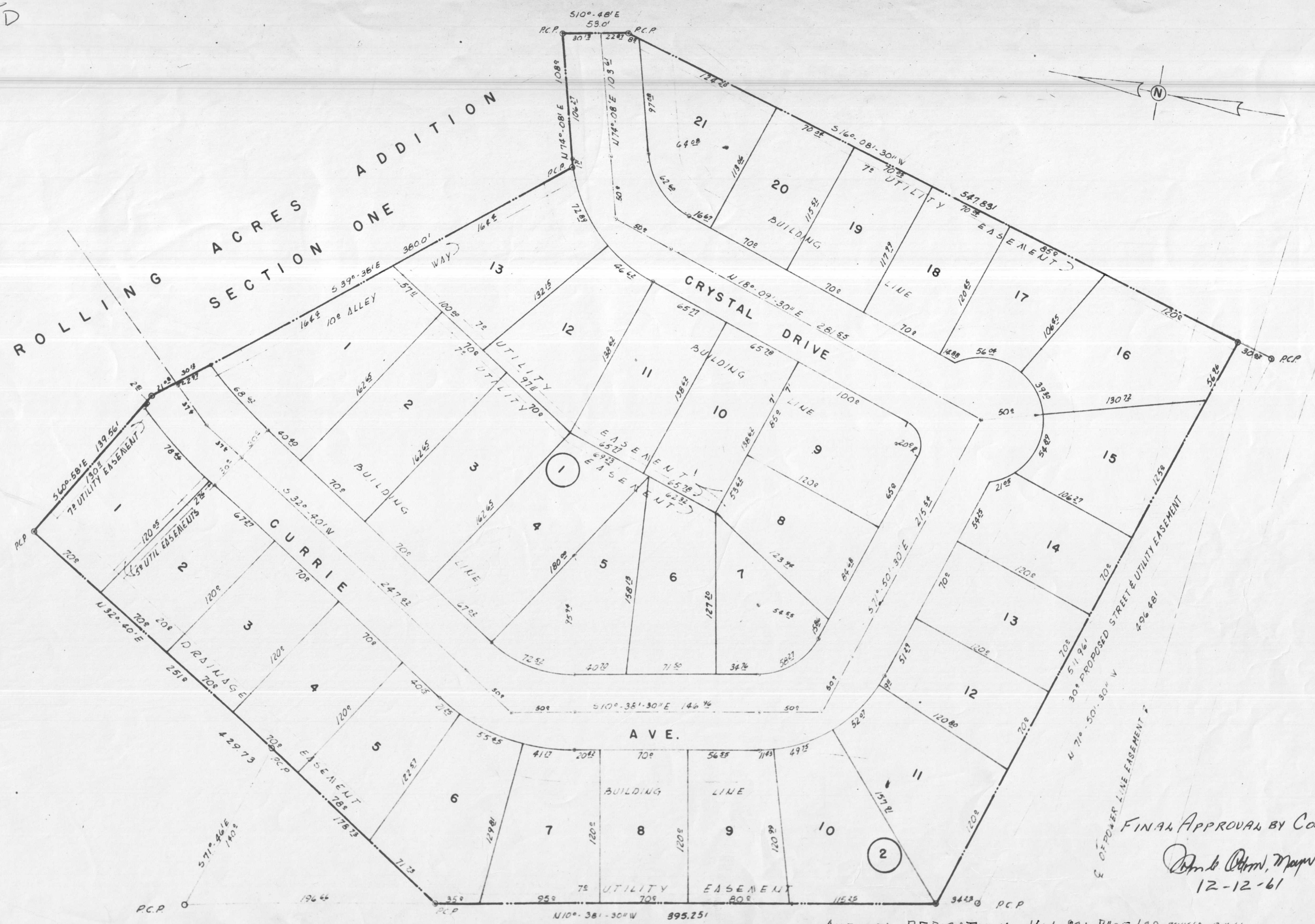


A
271D



ROLLING ACRES ADDITION SECTION ONE



FINAL APPROVAL BY COUNCIL
John L. O'Brien, Mayor
 12-12-61

AMENDED DEDICATION VOL. 891 PAGE 629 REVISED 12-11-61



ROLLING ACRES ADDITION SECTION TWO

FROM THE OFFICE OF
BELL, THOMAS & ASSOCIATE
 KILLEEN TEXAS

PLAT AND STREETS	
Scale 1" = 50'	Date 11- -61
Sheet No 2 OF 4	Drawn by JJS

8028-1-B