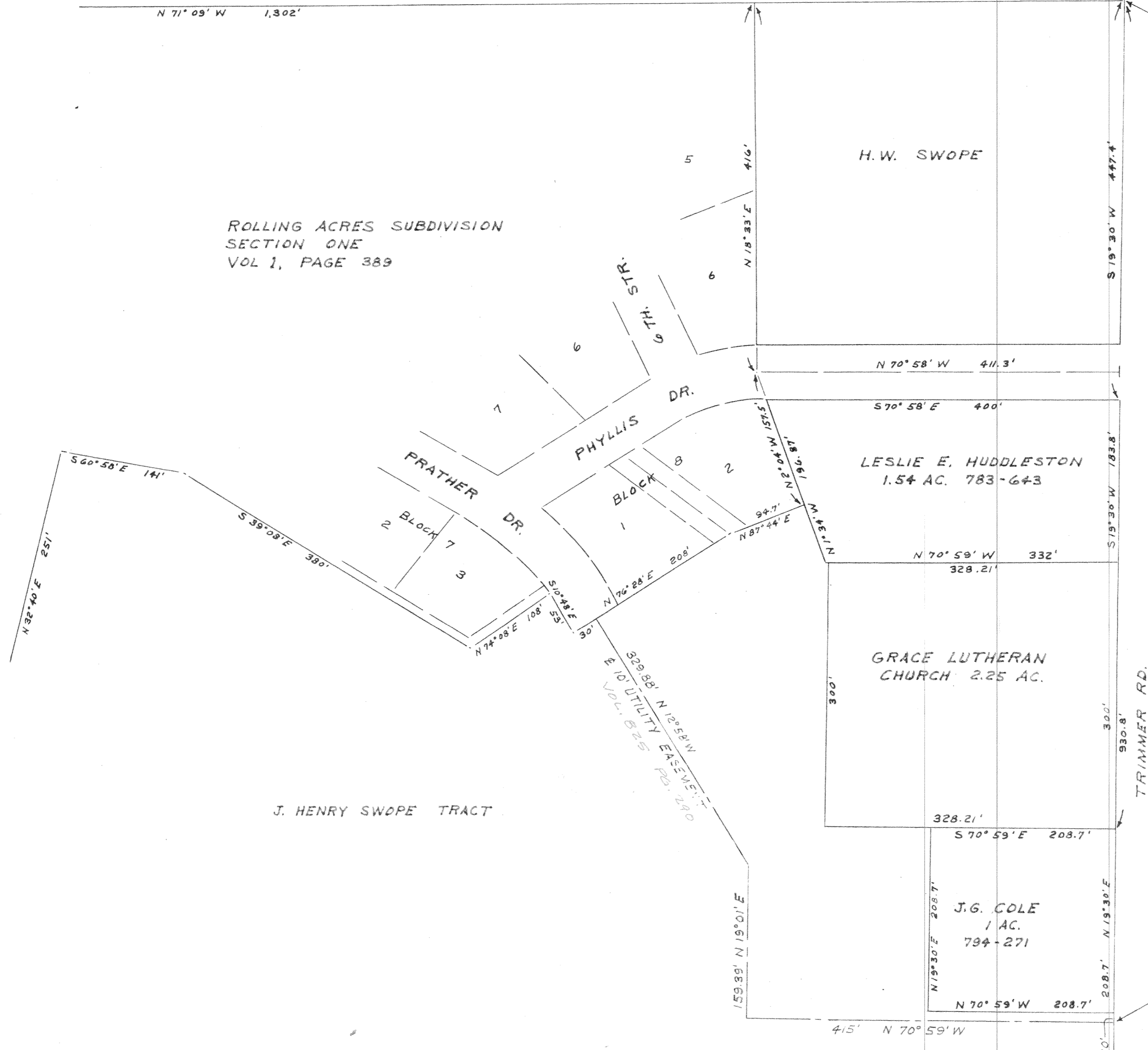


SOUTH PARK ADDITION

NE CORNER NATHAN HALBERT SUR., NE CORNER J. HENRY SWOPE, & SE CORNER SOUTH PARK ADDITION



PLAT SHOWING SURVEY OF CENTERLINE 10 FT. UTILITY EASEMENT ON THE J. HENRY SWOPE TRACT IN THE NATHAN HALBERT SURVEY, CITY OF KILLEEN, BELL COUNTY, TEXAS

SCALE 1" = 100'



**BERNARD JOHNSON & ASSOCS.**  
 CONSULTING ENGINEERS  
 HOUSTON TEXAS

I hereby certify this plat to be True and correct as reflected by an actual survey made on the ground, this the 21<sup>st</sup> day of Sept., A.D. 1960

**9009-B**  
 E. J. Dietrich  
 Registered Professional Engineer