

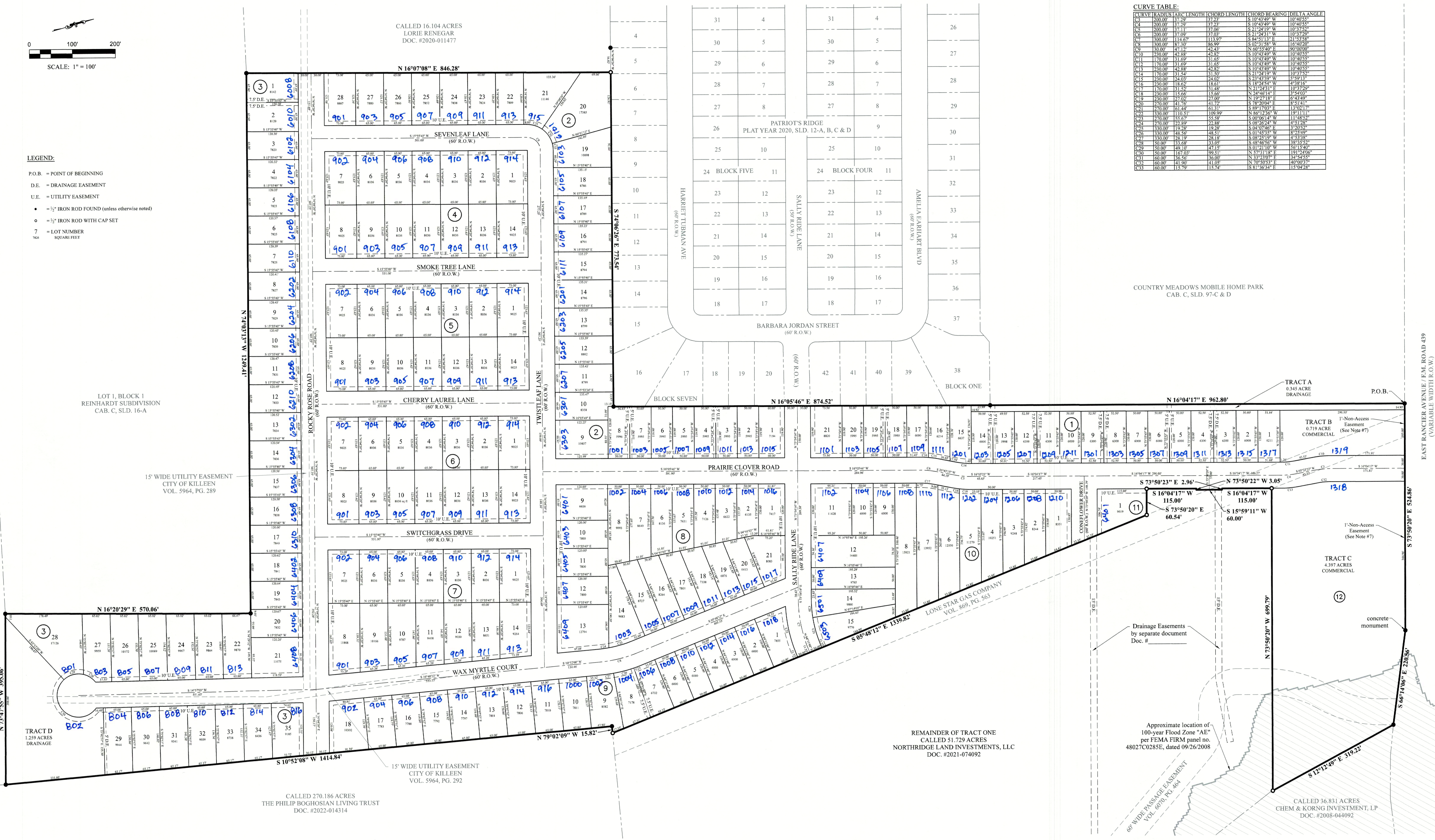
- LEGEND:**
- P.O.B. = POINT OF BEGINNING
 - D.E. = DRAINAGE EASEMENT
 - U.E. = UTILITY EASEMENT
 - = 1/2" IRON ROD FOUND (unless otherwise noted)
 - = 1/2" IRON ROD WITH CAP SET
 - 7 = LOT NUMBER
 - 764 = SQUARE FEET

CURVE TABLE:

CURVE	RADIUS	ARC LENGTH	CHORD LENGTH	CHORD BEARING	DELTA ANGLE
C1	200.00	37.29	37.29	S 10°43'49" W	10°40'55"
C2	200.00	37.29	37.29	S 10°43'49" W	10°40'55"
C3	200.00	37.29	37.29	S 10°43'49" W	10°40'55"
C4	200.00	37.29	37.29	S 10°43'49" W	10°40'55"
C5	200.00	37.29	37.29	S 10°43'49" W	10°40'55"
C6	200.00	37.29	37.29	S 10°43'49" W	10°40'55"
C7	200.00	37.29	37.29	S 10°43'49" W	10°40'55"
C8	200.00	37.29	37.29	S 10°43'49" W	10°40'55"
C9	200.00	37.29	37.29	S 10°43'49" W	10°40'55"
C10	200.00	37.29	37.29	S 10°43'49" W	10°40'55"
C11	200.00	37.29	37.29	S 10°43'49" W	10°40'55"
C12	200.00	37.29	37.29	S 10°43'49" W	10°40'55"
C13	200.00	37.29	37.29	S 10°43'49" W	10°40'55"
C14	200.00	37.29	37.29	S 10°43'49" W	10°40'55"
C15	200.00	37.29	37.29	S 10°43'49" W	10°40'55"
C16	200.00	37.29	37.29	S 10°43'49" W	10°40'55"
C17	200.00	37.29	37.29	S 10°43'49" W	10°40'55"
C18	200.00	37.29	37.29	S 10°43'49" W	10°40'55"
C19	200.00	37.29	37.29	S 10°43'49" W	10°40'55"
C20	200.00	37.29	37.29	S 10°43'49" W	10°40'55"
C21	200.00	37.29	37.29	S 10°43'49" W	10°40'55"
C22	200.00	37.29	37.29	S 10°43'49" W	10°40'55"
C23	200.00	37.29	37.29	S 10°43'49" W	10°40'55"
C24	200.00	37.29	37.29	S 10°43'49" W	10°40'55"
C25	200.00	37.29	37.29	S 10°43'49" W	10°40'55"
C26	200.00	37.29	37.29	S 10°43'49" W	10°40'55"
C27	200.00	37.29	37.29	S 10°43'49" W	10°40'55"
C28	200.00	37.29	37.29	S 10°43'49" W	10°40'55"
C29	200.00	37.29	37.29	S 10°43'49" W	10°40'55"
C30	200.00	37.29	37.29	S 10°43'49" W	10°40'55"
C31	200.00	37.29	37.29	S 10°43'49" W	10°40'55"
C32	200.00	37.29	37.29	S 10°43'49" W	10°40'55"
C33	200.00	37.29	37.29	S 10°43'49" W	10°40'55"
C34	200.00	37.29	37.29	S 10°43'49" W	10°40'55"
C35	200.00	37.29	37.29	S 10°43'49" W	10°40'55"
C36	200.00	37.29	37.29	S 10°43'49" W	10°40'55"
C37	200.00	37.29	37.29	S 10°43'49" W	10°40'55"
C38	200.00	37.29	37.29	S 10°43'49" W	10°40'55"

CALLED 31.981 ACRES
THE PHILIP BOGHOSIAN LIVING TRUST
DOC. #2022-021562

EAST RANCIER AVENUE / FM ROAD 439
(VARIABLE WIDTH R.O.W.)



LOT 1, BLOCK 1
REINHARDT SUBDIVISION
CAB. C, SLD. 16-A

15' WIDE UTILITY EASEMENT
CITY OF KILLEEN
VOL. 5964, PG. 289

CALLED 270.186 ACRES
THE PHILIP BOGHOSIAN LIVING TRUST
DOC. #2022-014314

REMAINDER OF TRACT ONE
CALLED 51.729 ACRES
NORTHBRIDGE LAND INVESTMENTS, LLC
DOC. #2021-074092

Approximate location of
100-year Flood Zone "AE"
per FEMA FIRM panel no.
48027C0285E, dated 09/26/2008

CALLED 36.831 ACRES
CHEM & KORNG INVESTMENT, LP
DOC. #2008-044092

FINAL PLAT REYNOLDS CROSSING, PHASE 1

BEING AN ADDITION WITHIN THE CITY OF KILLEEN, BELL COUNTY, TEXAS.
56.27 ACRES TOTAL, 12 BLOCKS, 4 TRACTS, 195 LOTS

