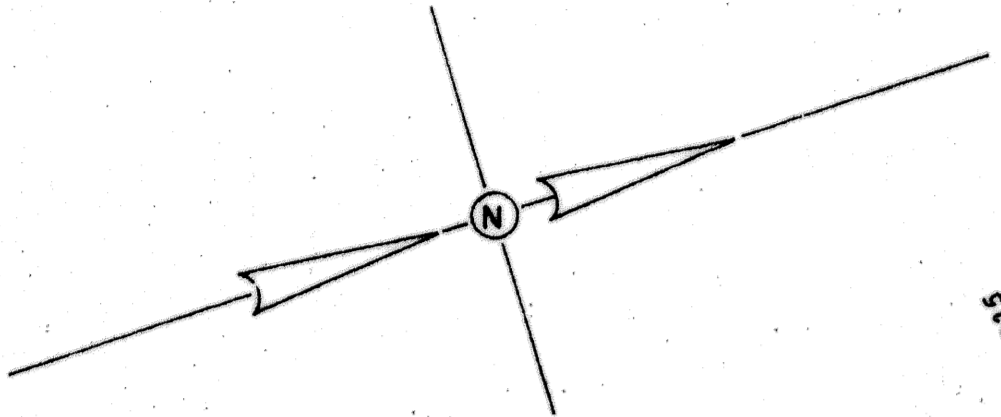


UTILITY EASEMENTS TO BE 10', UNLESS OTHERWISE SHOWN.
 ELEVATIONS BASED ON U.S.C. & G.S. DATA.



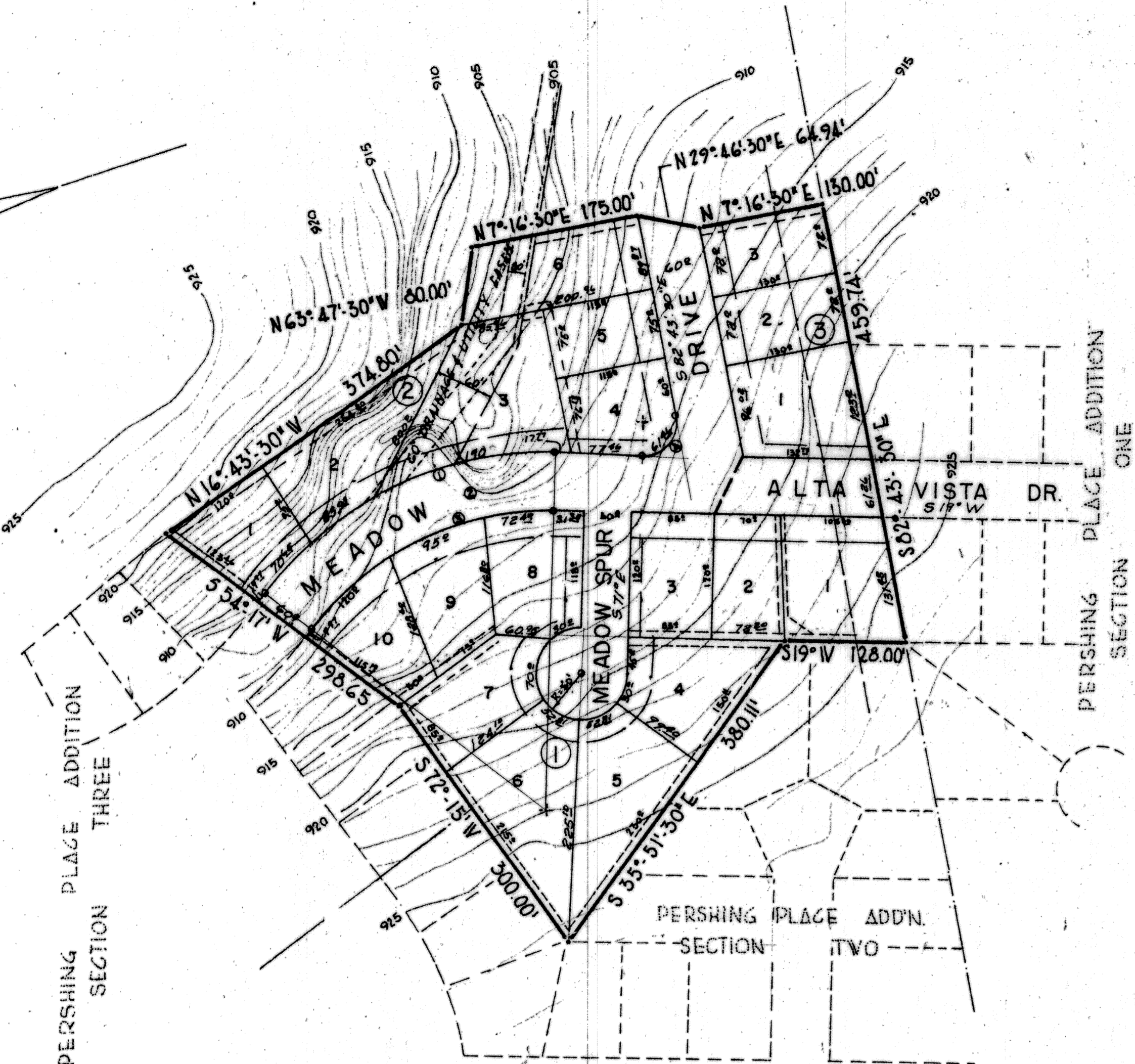
CURVE DATA

- 1.A = 53° 39'
- D = 15' 37'
- T = 185.62'
- L = 343.66'
- R = 367.03'

- 2.A = 53° 39'
- D = 17' 00'
- T = 170.45'
- L = 315.59'
- R = 337.03'
- E = 40.65'

- 3.A = 53° 39'
- D = 18' 40'
- T = 155.27'
- L = 287.49'
- R = 307.03'

- 4.A = 100° 37'
- D = 1'
- T = 40.0'
- L = 61.46'
- R = 35.0'



**PERSHING PLACE ADDITION
 SECTION FOUR**

WESTENFIELD DEVELOPMENT CO
 KILLEEN, TEXAS

J. W. HALL JR. CONSULTING ENGINEER
 KILLEEN, TEXAS

Approved: City Planning Commission
 12 Nov 1963
Ray C. Mason, Chairman

FILED FOR RECORD THIS 3rd DAY OF December, 19 63,
 IN PLAT BOOK 892, PAGE 312, DEED RECORDS
 OF BELL COUNTY, TEXAS.
 161-C

APPROVED BY CITY COUNCIL
 DATE 11/12/63 MAYOR *P. Connell*

FINAL PLAT

7.07 ACRES 19 LOTS

KNOW ALL MEN BY THESE PRESENTS:

THAT I, J. W. HALL JR., DO HEREBY CERTIFY THAT I PREPARED THIS PLAT FROM AN ACTUAL AND ACCURATE SURVEY OF THE LAND AND THAT THE CORNER MONUMENTS SHOWN THEREON WERE PROPERLY PLACED UNDER MY PERSONAL SUPERVISION, IN ACCORDANCE WITH THE SUBDIVISION REGULATIONS OF THE CITY OF KILLEEN, TEXAS.

J. W. Hall Jr.



PERSHING PLACE ADDITION SECTION FOUR	
PLAT	SCALE 1" = 100'
J. W. HALL JR. CONSULTING ENGINEER	KILLEEN, TEXAS
DATE	APPROVED
	DRAWING NUMBER 1