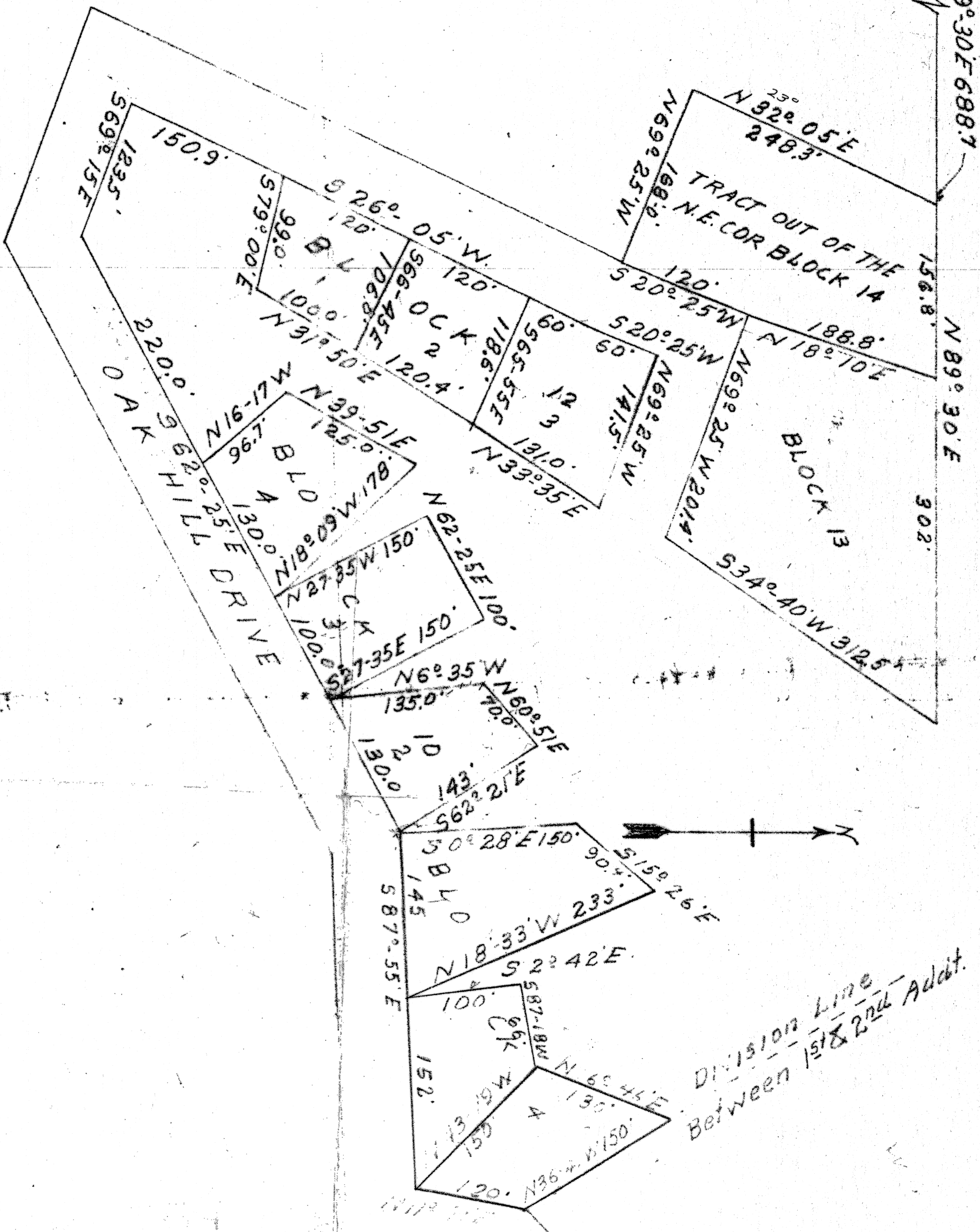


S.W. Cor. H.C. McClung Survey



I M.A. Moss a registered professional engineer of the State of Texas do certify that the above plat of Blocks 10, 12, 13 and tract out of the N.E. Corner of Block 14 was made from a survey of the site, and that to Block 9 at the S.E. Cor. Block A plotted from Recorded Plat of Oak Hill Heights second addition killed Texas and is shown as correct to the best of my belief and knowledge.

M.A. Moss

RE-PLAT OF BLOCK 4, 10, 12, 13
AND TRACT OUT OF THE N.E.
COR. BLOCK 14, OAK HILL HEIGHTS
SECOND ADDITION TO KILLEEN TEXAS
Scale 1" = 100 ft. March 11 1952