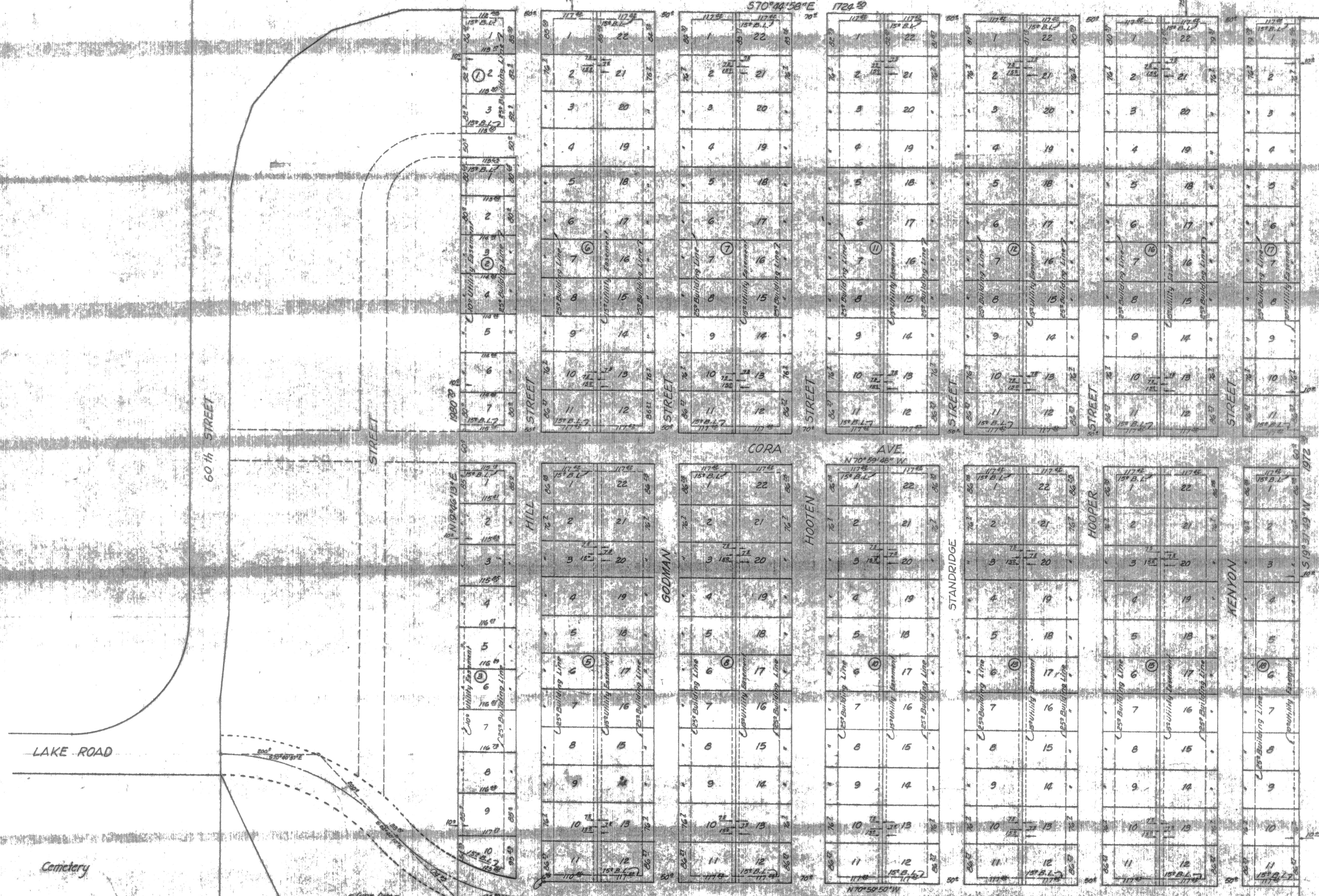


OLD FM. HWY 439 (WESTCLIFF ROAD)

570°44'58"E 1724.29



LAKE ROAD

Cemetery

Give Data

Inner	E	Outer
4 27'00"	15'10"	22'50"
X 364.08	421.85	416.85
T 92.36	91.50	91.10
L 180.99	180.18	179.76
C 173.18	172.73	172.85

Filed for record this 10 day of July, 1972 in Plat Book 137, Page 549, Deed Records of Bell County, Texas.

Approved this 12 day of May, 1972 by the Planning Commission of the City of Killeen, Texas

Lucas Jones
Chairman, Planning Commission
W. J. Frank
Secretary, Planning Commission

Long Branch Park

Approved this 12 day of May, 1972
James P. ...
Mayor
Attest: City Secretary

LAKE ROAD

N 70° 59' 50" W 1729.57

REVISIONS		
NO.	DATE	BY

DRAWN BY		SCALE		MATERIAL	
M.E. - W.M.		1" = 100'			
CHECKED		DATE		DRAWING NO.	
P.L.D.		7/11/72			
TRACED		APP'D			

FINAL PLAT
LEON HEIGHTS SUB-DIV.

