

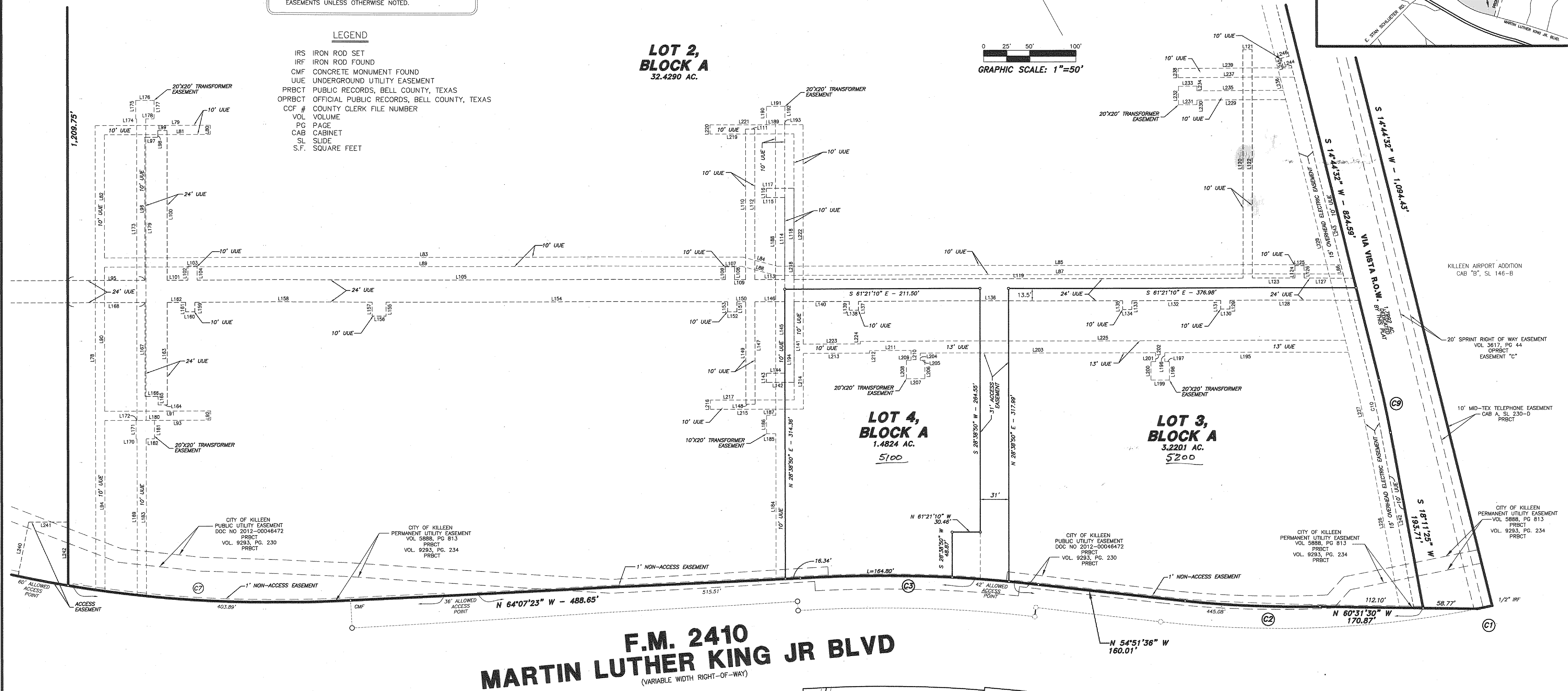
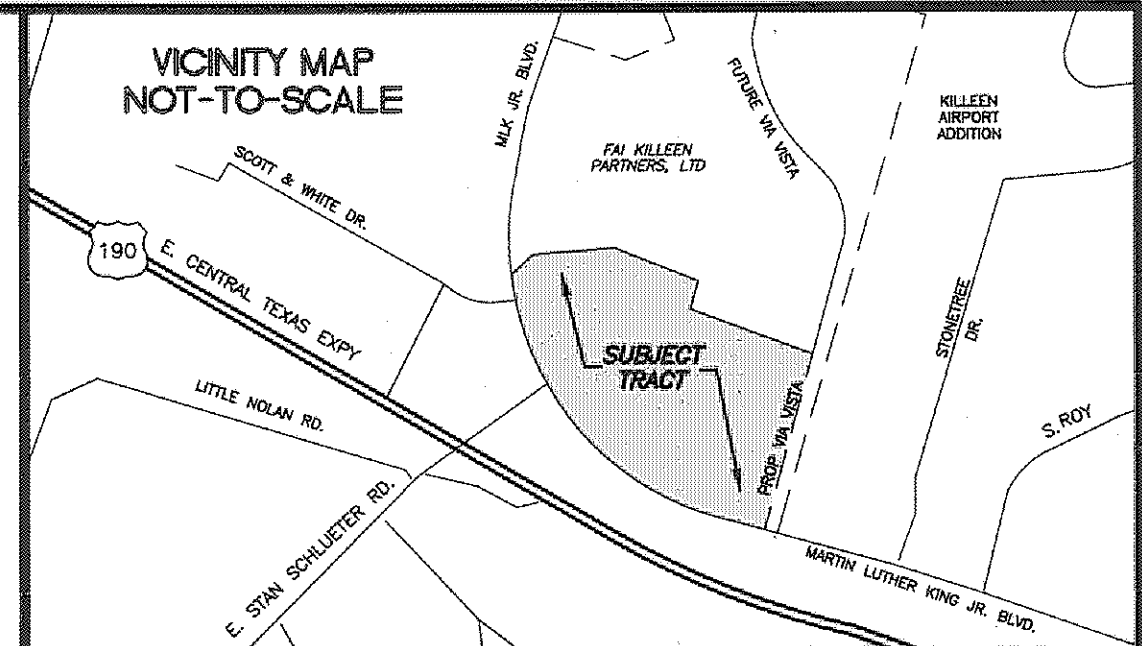
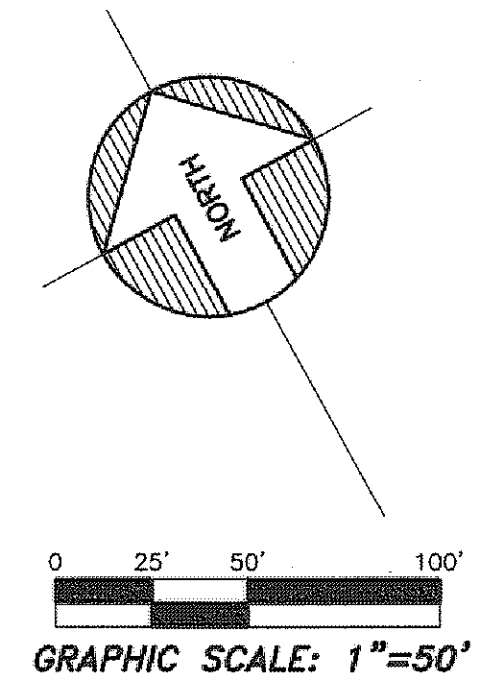
**NOTES:**

- ALL BOUNDARY CORNERS ARE 5/8" IRON ROD SET UNLESS OTHERWISE NOTED.
- ALL EASEMENTS BY THIS PLAT SHALL BE UNDERGROUND EASEMENTS UNLESS OTHERWISE NOTED.

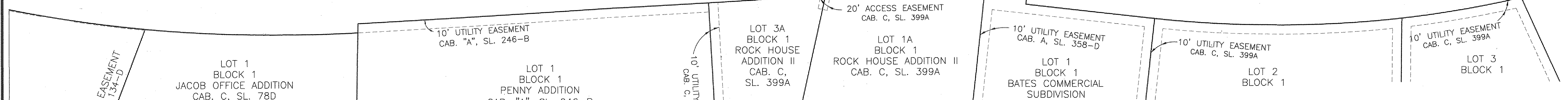
**LEGEND**

IRS IRON ROD SET  
 IRF IRON ROD FOUND  
 CMF CONCRETE MONUMENT FOUND  
 UUE UNDERGROUND UTILITY EASEMENT  
 PRBCT PUBLIC RECORDS, BELL COUNTY, TEXAS  
 OPRCT OFFICIAL PUBLIC RECORDS, BELL COUNTY, TEXAS  
 CCF # COUNTY CLERK FILE NUMBER  
 VOL VOLUME  
 PG PAGE  
 CAB CABINET  
 SL SLIDE  
 S.F. SQUARE FEET

**LOT 2,  
 BLOCK A**  
 32.4290 AC.



**F.M. 2410  
 MARTIN LUTHER KING JR BLVD**  
 (VARIABLE WIDTH RIGHT-OF-WAY)



**FINAL PLAT  
 LA CASCATA ADDITION  
 LOTS 1 - 4, BLOCK A**

BEING A REPLAT OF 63.2094 ACRES OUT OF TRACT C & D  
 KILLEEN AREA INVESTMENT CORPORATION, INC.  
 INDUSTRIAL TRACT SUBDIVISION  
 CABINET A, SLIDE 230-D PRBCT  
 CITY OF KILLEEN, BELL COUNTY, TEXAS  
 DECEMBER 17, 2015

**ENGINEER**  
 CATES-CLARK & ASSOC., LLP  
 14800 QUORUM DRIVE, SUITE 200  
 DALLAS, TEXAS 75254  
 (972) 385-2272  
 CONTACT: LAWRENCE A. CATES, P.E.  
 EMAIL: LCATES@CATES-CLARK.COM

**SURVEYOR**  
 BLUE SKY SURVEYING &  
 MAPPING CORPORATION  
 11015 MIDWAY ROAD  
 DALLAS, TEXAS 75229  
 (214) 358-4500  
 CONTACT: DAVID PETREE

**OWNER**  
 FAI KILLEEN PARTNERS  
 2700 BARTON CREEK BOULEVARD, SUITE 230  
 AUSTIN, TEXAS 78735-1639  
 (512) 371-6692  
 CONTACT: GARY J. DAVIS  
 EMAIL: GJDAVIS@FIRSTADVISORS-INC.COM