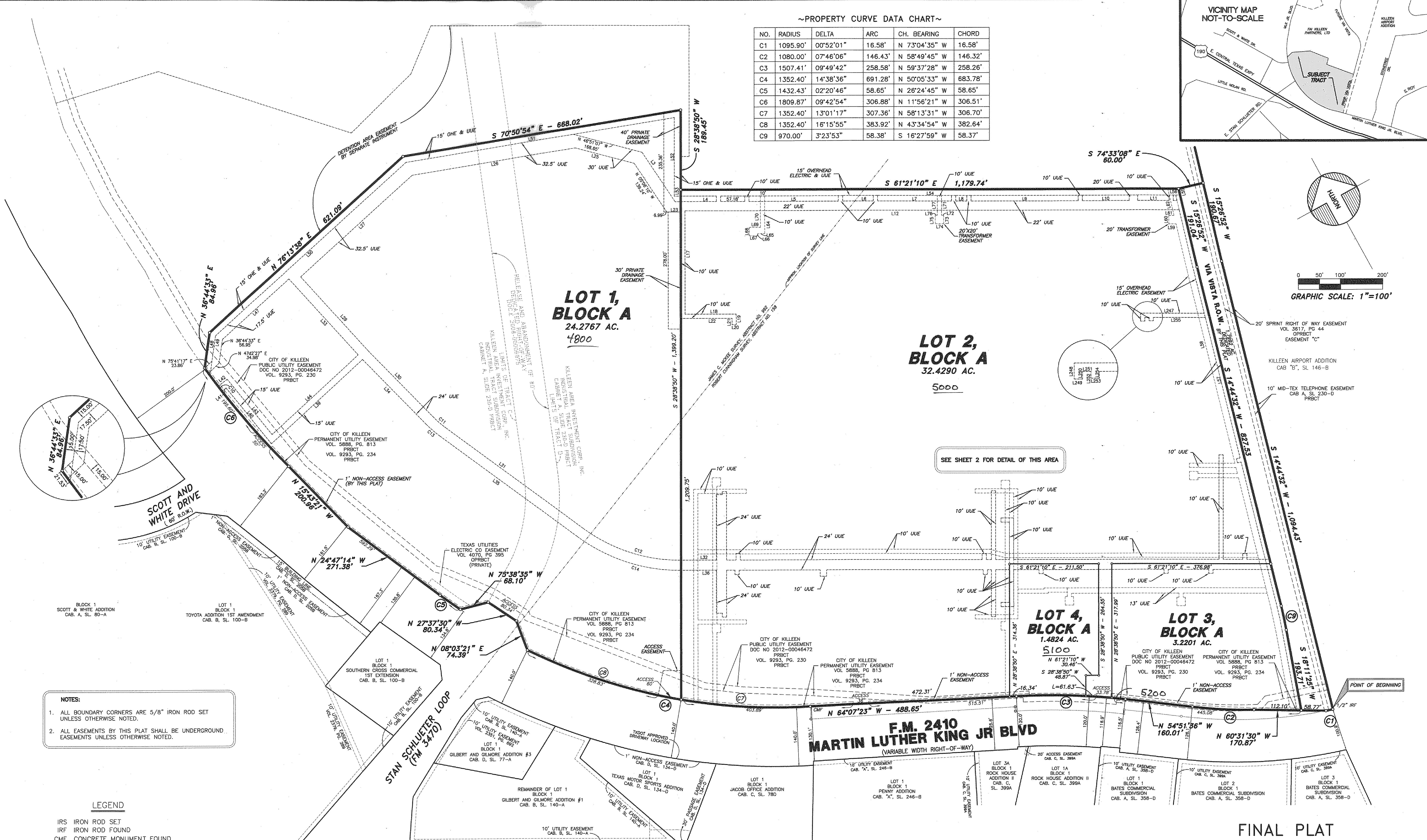
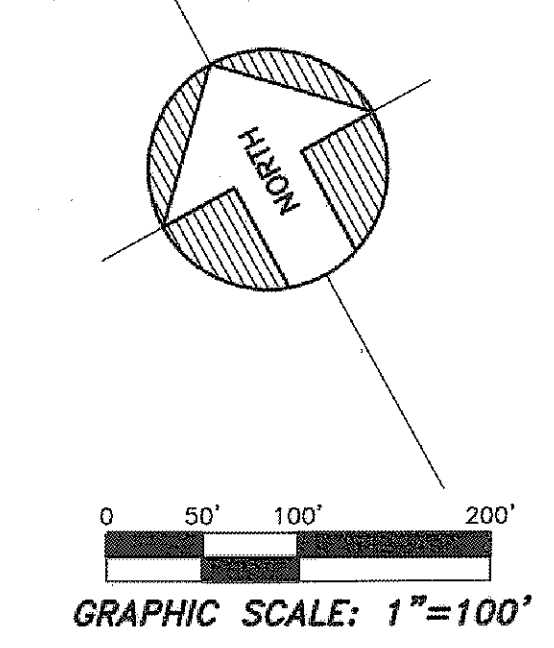
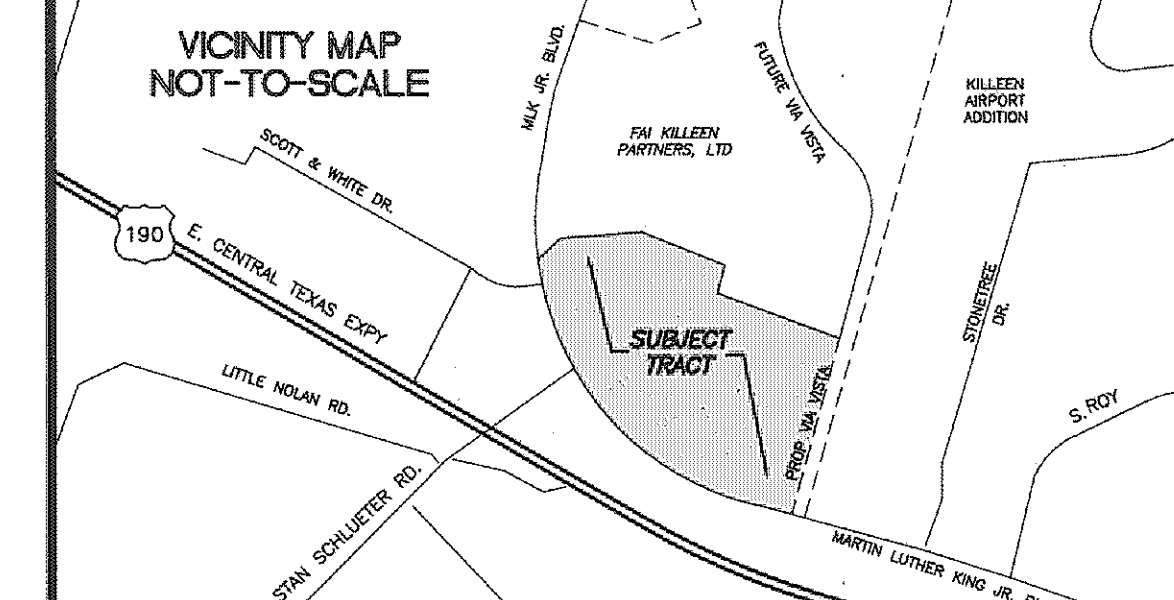


~PROPERTY CURVE DATA CHART~

NO.	RADIUS	DELTA	ARC	CH. BEARING	CHORD
C1	1095.90'	00°52'01"	16.58'	N 73°04'35" W	16.58'
C2	1080.00'	07°46'06"	146.43'	N 58°49'45" W	146.32'
C3	1507.41'	09°49'42"	258.58'	N 59°37'28" W	256.26'
C4	1352.40'	14°38'36"	691.28'	N 50°05'33" W	683.78'
C5	1432.43'	02°20'46"	58.65'	N 26°24'45" W	58.65'
C6	1809.87'	09°42'54"	306.88'	N 11°56'21" W	306.51'
C7	1352.40'	13°01'17"	307.36'	N 58°13'31" W	306.70'
C8	1352.40'	16°15'55"	383.92'	N 43°34'54" W	382.64'
C9	970.00'	3°23'53"	58.38'	S 16°27'59" W	58.37'



- NOTES:**
1. ALL BOUNDARY CORNERS ARE 5/8" IRON ROD SET UNLESS OTHERWISE NOTED.
 2. ALL EASEMENTS BY THIS PLAT SHALL BE UNDERGROUND EASEMENTS UNLESS OTHERWISE NOTED.

- LEGEND**
- IRS IRON ROD SET
 - IRF IRON ROD FOUND
 - CMF CONCRETE MONUMENT FOUND
 - UUE UNDERGROUND UTILITY EASEMENT
 - PRBCT PUBLIC RECORDS, BELL COUNTY, TEXAS
 - OPRBT OFFICIAL PUBLIC RECORDS, BELL COUNTY, TEXAS
 - CF # COUNTY CLERK FILE NUMBER
 - VOL VOLUME
 - PG PAGE
 - CAB CABINET
 - SL SLIDE
 - S.F. SQUARE FEET

ENGINEER
 CATES-CLARK & ASSOC., LLP
 14800 QUORUM DRIVE, SUITE 200
 DALLAS, TEXAS 75254
 (972) 385-2272
 CONTACT: LAWRENCE A. CATES, P.E.
 EMAIL: LCATES@CATES-CLARK.COM

SURVEYOR
 BLUE SKY SURVEYING & MAPPING CORPORATION
 11015 MIDWAY ROAD
 DALLAS, TEXAS 75229
 (214) 358-4500
 CONTACT: DAVID PETREE

OWNER
 FAI KILLEEN PARTNERS
 2700 BARTON CREEK BOULEVARD, SUITE 230
 AUSTIN, TEXAS 78735-1639
 (512) 371-6892
 CONTACT: GARY J. DAVIS
 EMAIL: GJDAVIS@FIRSTADVISORS-INC.COM

FINAL PLAT
LA CASCATA ADDITION
LOTS 1 - 4, BLOCK A
 BEING A REPLAT OF 63.2074 ACRES OUT OF TRACT C & D
 KILLEEN AREA INVESTMENT CORPORATION, INC.
 INDUSTRIAL TRACT SUBDIVISION
 CABINET A, SLIDE 230-D PRBCT
 CITY OF KILLEEN, BELL COUNTY, TEXAS
 DECEMBER 17, 2015