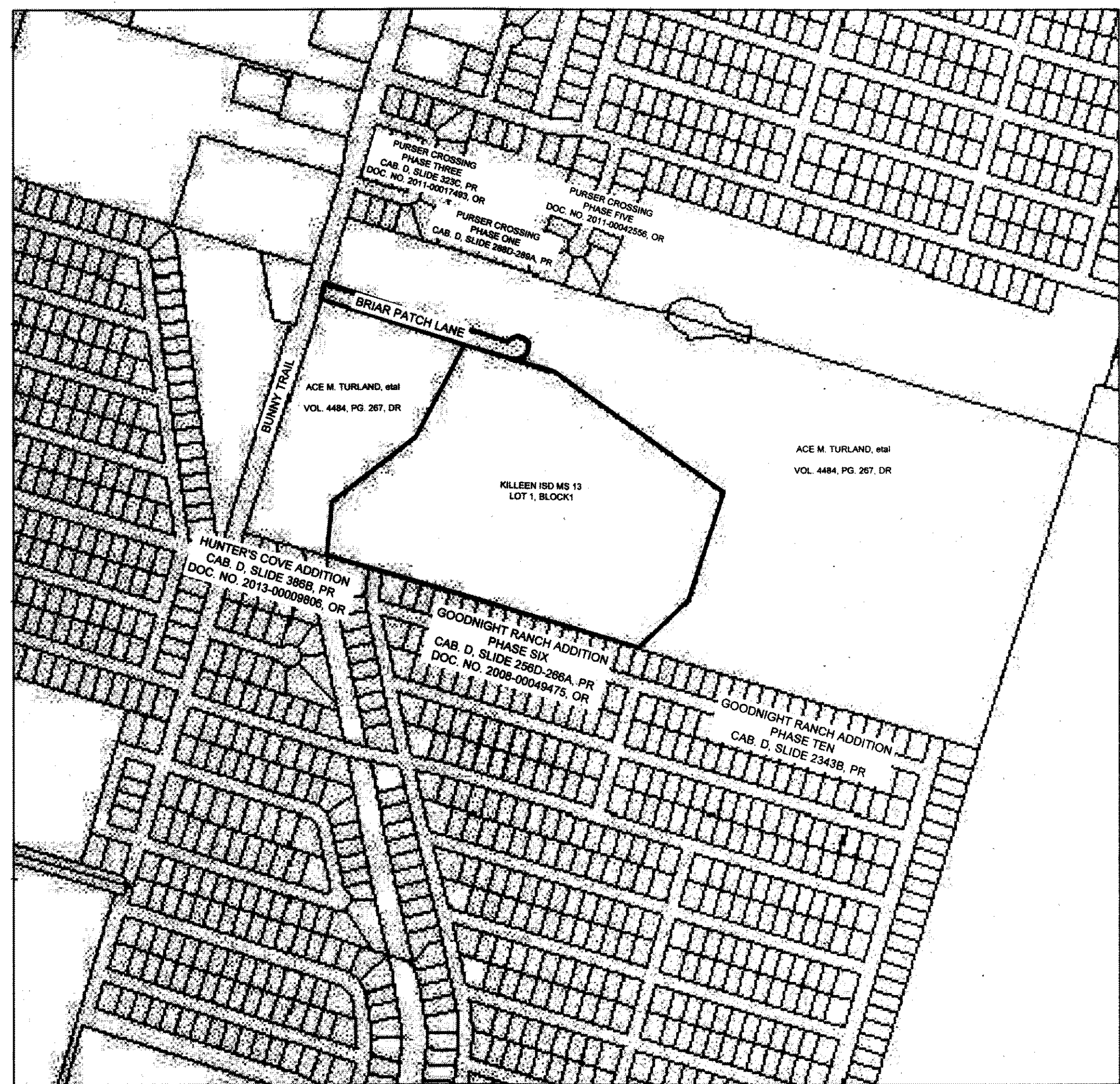


KILLEEN ISD MIDDLE SCHOOL 13
A FINAL PLAT OF 32.757 ACRES OF LAND IN THE
EUGENE LASERE SURVEY, A-527, BELL COUNTY, TEXAS

PROJECT No.
516.6719
CAD FILE
BOUNDARY
CREW & F.B.
FIELDBOOK 1915, 1917
JJ/JS/BW
DRAWN
TPW/JJ

SHEET
2 OF 2



KILLEEN ISD MIDDLE SCHOOL 13
LOT 1, BLOCK 1
ADJOINING PROPERTIES
(NOT TO SCALE)

CREEK BUFFER ZONES
(CBZ)

LINE	BEARING	DISTANCE
L101	S35°52'57"W	40.04'
L102	S07°56'07"W	5.31'
L103	S27°14'06"W	27.28'
L104	S34°53'28"W	31.63'
L105	S81°44'53"W	11.13'
L106	S16°20'58"W	35.13'
L107	N04°40'05"E	28.39'
L108	N04°07'08"E	65.24'
L109	N02°10'21"E	50.18'

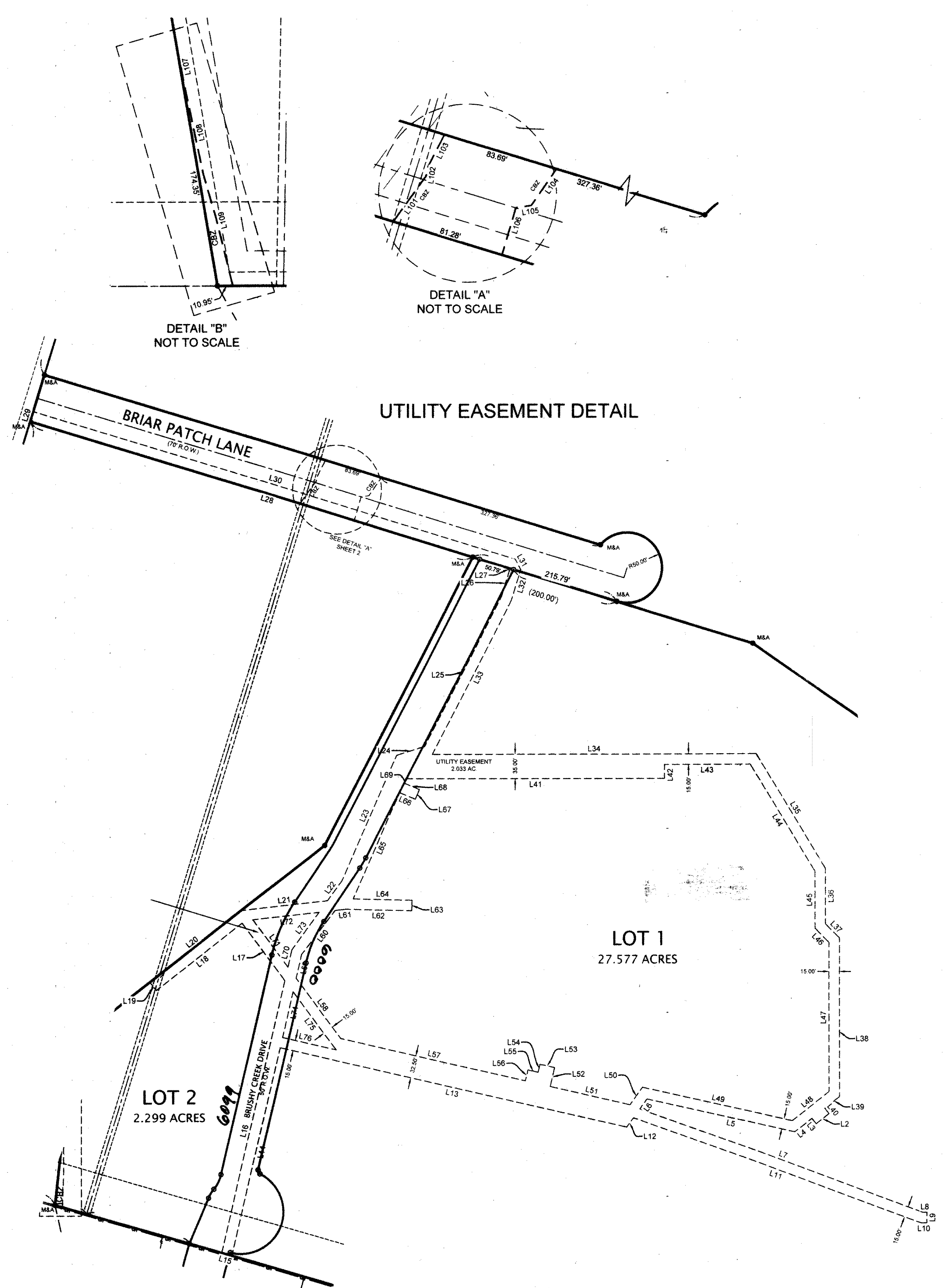
UTILITY EASEMENT

LINE	BEARING	DISTANCE
L2	S51°25'22"W	23.73'
L3	N38°34'38"W	9.98'
L4	S51°25'22"W	31.25'
L5	N77°10'25"W	216.79'
L6	S35°31'22"W	17.66'
L7	S89°57'31"E	431.09'
L8	S89°57'48"E	5.94'
L9	S00°00'00"E	15.00'
L10	N89°57'48"W	8.61'
L11	N69°53'31"W	437.88'
L12	S35°31'22"W	16.57'
L13	N77°00'00"W	508.13'
L14	S13°00'00"W	306.17'
L15	N73°55'12"W	15.02'
L16	N13°00'00"E	400.09'
L17	N36°36'36"W	101.63'
L18	S52°13'59"W	155.37'
L19	N37°46'01"W	15.00'
L20	N52°13'59"E	165.12'
L21	N83°28'48"E	123.92'
L22	N36°08'58"E	35.23'
L23	N23°38'44"E	195.59'
L24	N72°13'43"E	42.04'
L25	N27°13'43"E	240.92'

LINE	BEARING	DISTANCE
L26	N17°04'55"E	38.14'
L27	N27°55'05"W	4.39'
L28	N72°55'05"W	714.57'
L29	N17°04'39"E	15.00'
L30	S72°55'05"E	720.78'
L31	S27°55'05"E	16.82'
L32	S17°04'55"W	45.69'
L33	S27°13'43"W	247.37'
L34	N90°00'00"E	462.54'
L35	S31°16'27"E	191.27'
L36	S00°03'05"E	79.14'
L37	S45°03'05"E	28.17'
L38	S00°01'10"W	226.47'
L39	S51°25'22"W	27.10'
L40	S38°34'38"E	9.98'
L41	N90°00'00"E	369.84'
L42	N00°00'03"E	20.00'
L43	N90°00'00"E	122.30'
L44	S31°16'27"E	178.64'
L45	S00°03'05"E	81.16'
L46	S45°03'05"E	28.16'
L47	S00°01'10"W	213.03'
L48	S51°25'22"W	67.64'
L49	N77°10'25"W	219.56'

LINE	BEARING	DISTANCE
L50	S35°31'22"W	30.81'
L51	S77°00'00"E	116.90'
L52	S13°00'00"W	28.12'
L53	N77°00'00"W	21.50'
L54	S12°41'05"W	12.12'
L55	N77°00'00"W	14.98'
L56	S13°00'00"W	16.00'
L57	N77°00'00"W	270.75'
L58	N36°36'36"W	106.74'
L59	N13°00'00"E	34.71'
L60	N37°38'00"E	78.85'
L61	N83°28'48"E	14.71'
L62	S88°54'16"E	94.88'
L63	S01°05'44"W	15.00'
L64	S88°54'16"E	84.13'
L65	S23°42'31"W	165.51'
L66	S67°20'08"E	24.34'
L67	N22°38'34"E	15.00'
L68	N67°20'51"W	24.06'
L69	N23°42'31"E	6.77'
L70	S13°00'00"W	25.23'
L71	N36°36'36"W	83.51'
L72	N83°28'48"E	94.98'
L73	S36°08'58"W	65.93'

LINE	BEARING	DISTANCE
L74	N13°00'00"E	66.97'
L75	S36°36'36"E	103.35'
L76	N77°00'00"W	78.72'



REV. #	DATE	DESCRIPTION	DRAWN
1	03/16/16	REVISED NOTES / BUILDING LINES	TPW