

FRANZ TRACT

VACATED
VOL. 229B
PG. 746

Utility Easement

BLOCK EIGHT

HERMOSA DRIVE

BLOCK THIRTEEN

REDONDO DRIVE

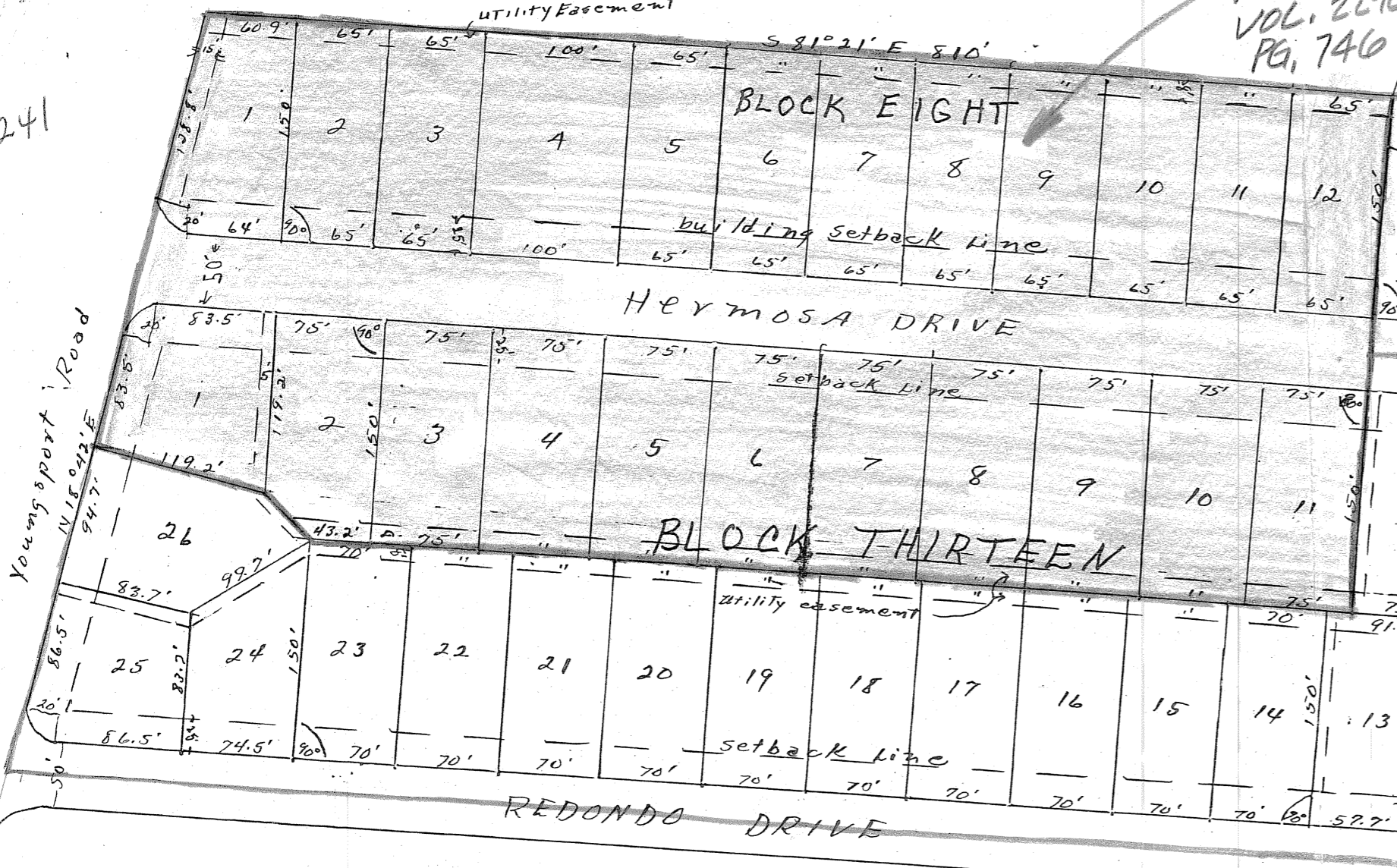
Block Fourteen

ESTELLE AVE

BLOCK TWELVE

1/241

Youngsport Road



KILLEN HEIGHTS		
Section I-A		
RAY SWOPE - Developer		
Fred Williamson - Co. Surveyors		
12-6-51	1" = 100'	703-B

Refer to Vol 629, Page 536, for Dedication