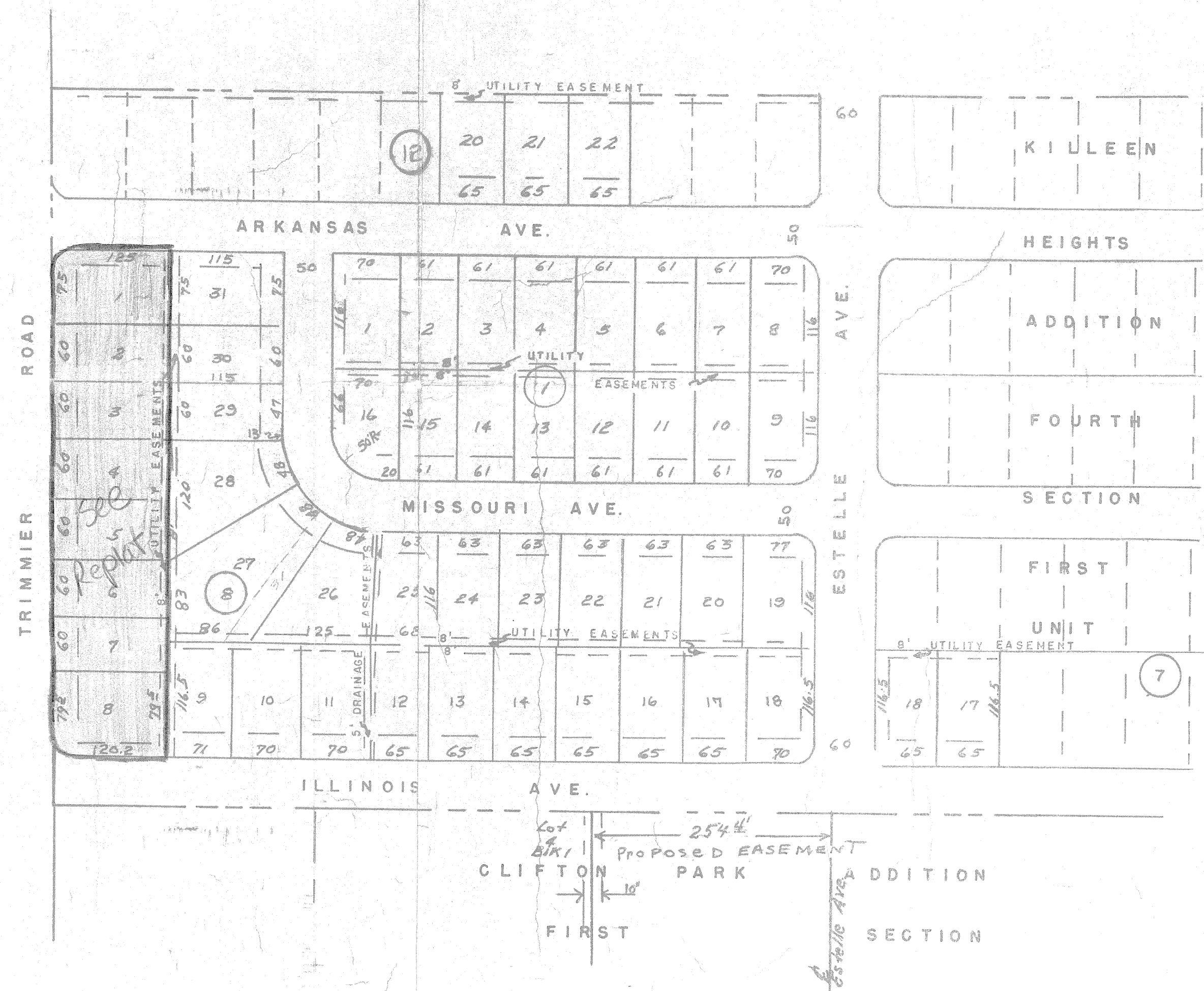


KILLEEN HEIGHTS ADDITION
SECOND SECTION



FILED FOR RECORD THIS 22 DAY OF AUG
1963 885 PART 113
NEW YORK, NEW YORK 2 103-D
PUBLIC RECORDS OF GIL COUNTY, TEXAS

BELL ENGINEERING COMPANY
KILLEEN, TEXAS

PLAT OF
KILLEEN HTS. ADDN.
FOURTH SECTION
SECOND UNIT

SCALE 1" = 100' DATE FEB. 1963