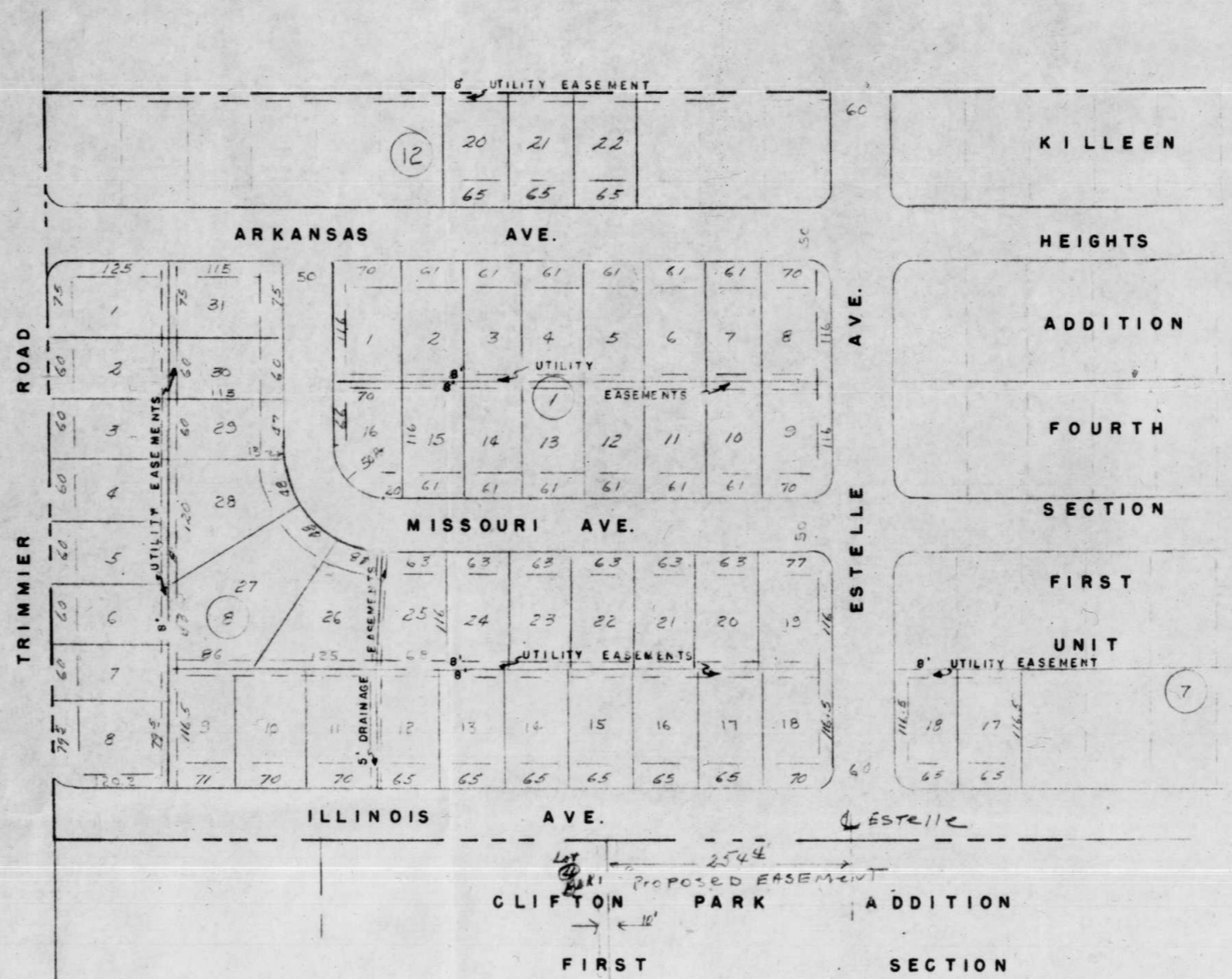


A
226 A

103-4

KILLEEN HEIGHTS ADDITION
SECOND SECTION



APPROVED BY CITY COUNCIL
DATE 5/27/63 MAYOR *[Signature]*

ATTEST: *[Signature]*
CITY SECRETARY



APPROVED SUBJECT TO CONTRACT REQUIREMENTS
CITY OF KILLEEN, TEXAS
BY *[Signature]* 5-27-63
DATE 5-27-1963
APPROVED *[Signature]*
DIRECTOR PUBLIC WORKS

BELL ENGINEERING COMPANY	
KILLEEN, TEXAS	
PLAT OF	
KILLEEN	HTS. ADDN.
FOURTH	SECTION
SECOND	UNIT
SCALE	DATE
1" = 100'	FEB. 1963