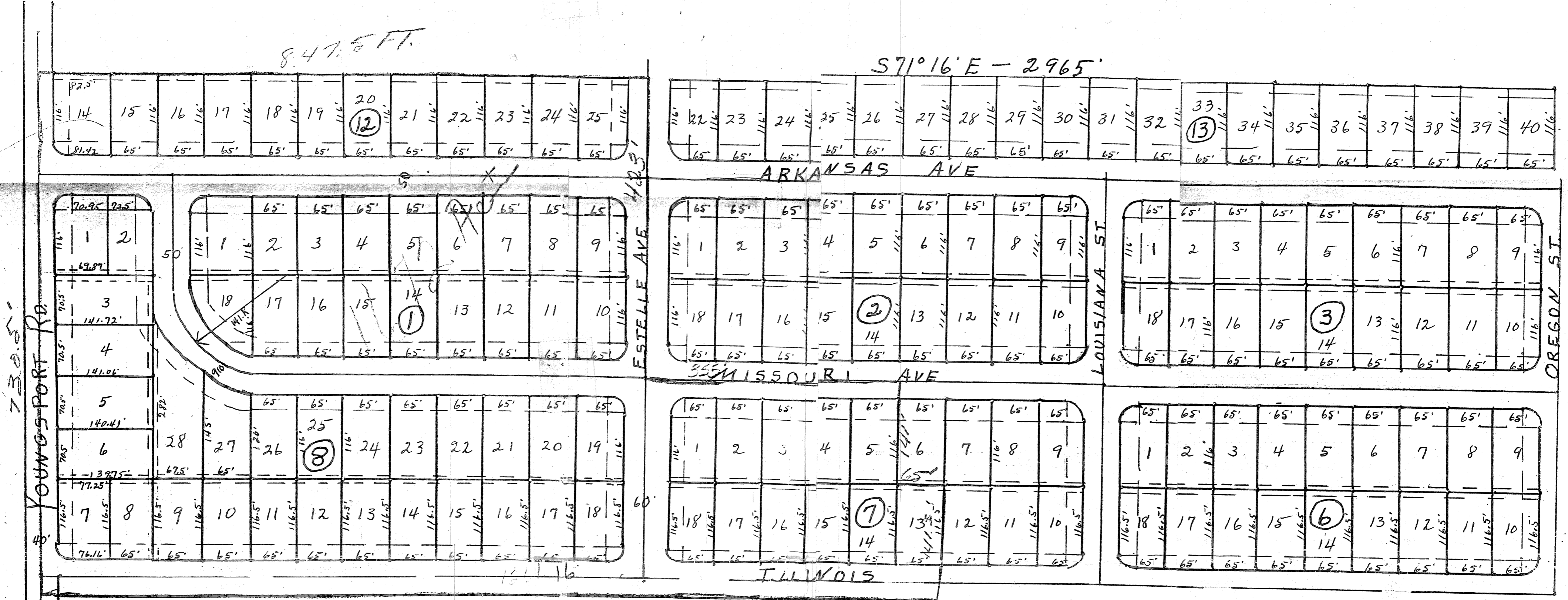


Slide 131

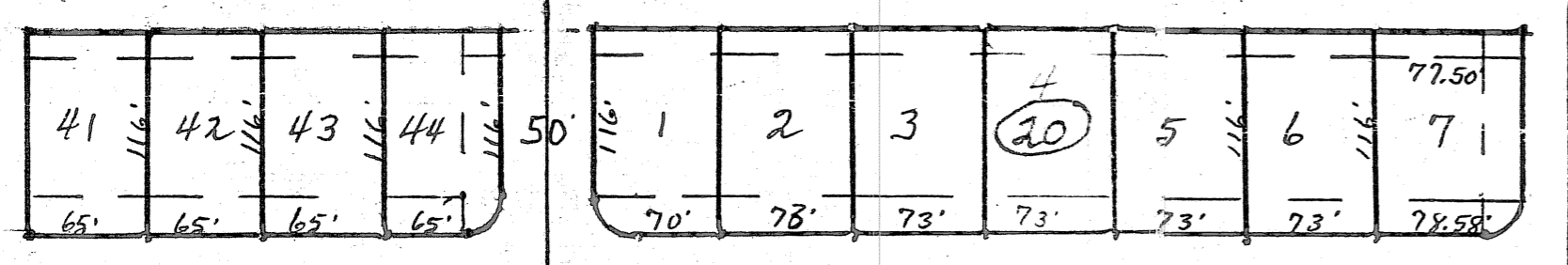
847.5 FT.

S71°16'E - 2965'



730.5' YOUNGSPORT RD.

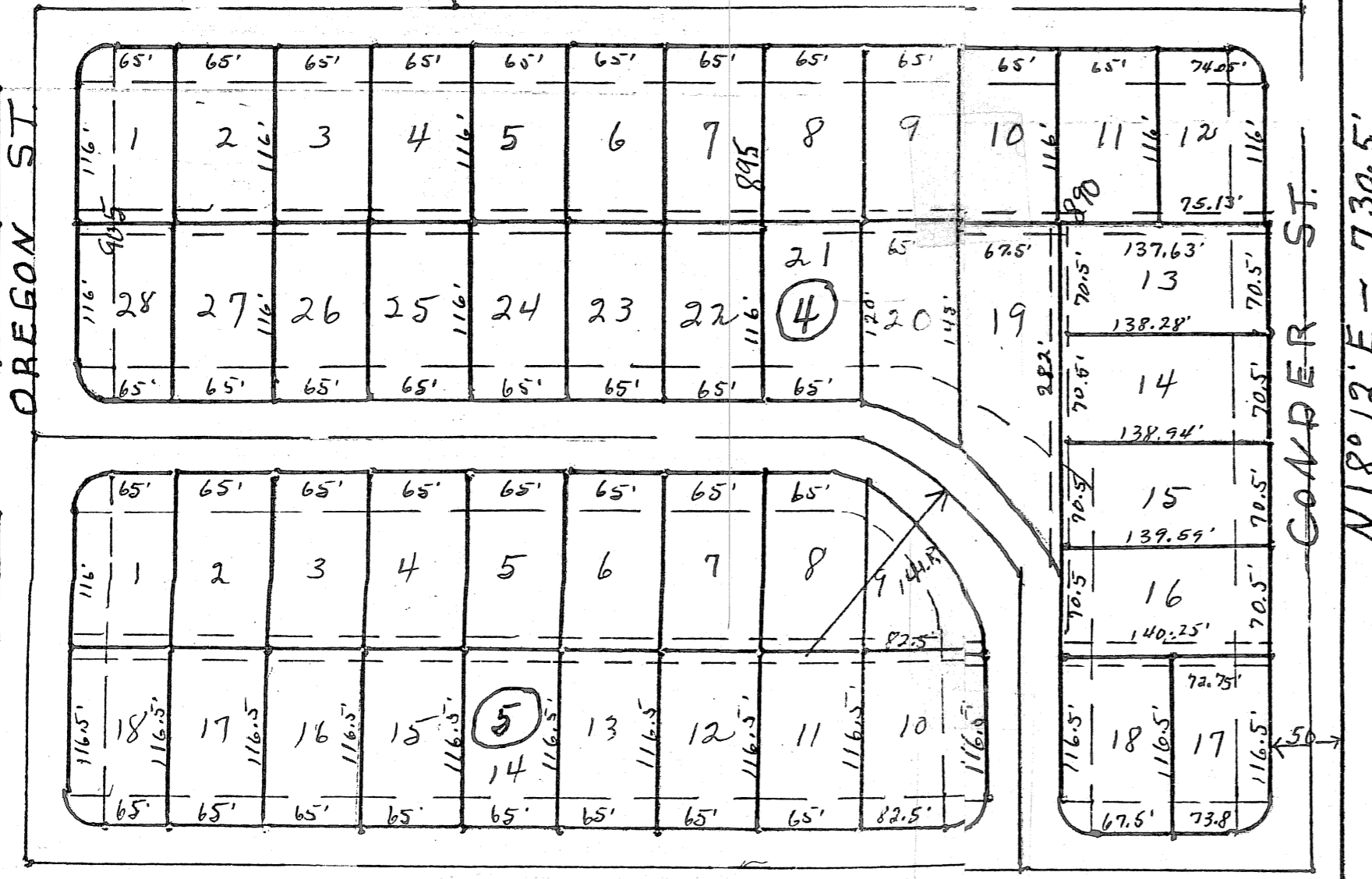
S71°16'E - 2965'



NOTE 20 LOTS USUAL SIZE 116' X 65'
 28 LOTS LARGER SIZE
 SETBACK LINES ARE 25' ON FRONT
 AND 15' ON SIDES
 UTILITY EASEMENTS ARE 8'
 AT BACK OF LOTS

THIS PLAT ACCEPTED AND APPROVED
 BY THE CITY OF KILLEEN TEXAS
 FOR RECORDING PURPOSES ONLY

SEAL
 W. S. BIGHAM
 CITY SECRETARY
 JOHNNIE TOLIVER
 MAYOR



N18°12'E - 730.5'

BELL & CLAYTON ENGINEERS
 KILLEEN TEXAS

DESIGNED BY A.T.S.	KILLEEN HEIGHTS #4	
DRAWN BY A.T.S.	ADDITION TO	
CHECKED BY	KILLEEN TEXAS	
APPROVED BY	PLAN LAYOUT	
	SCALE 1"=100'	DATE 1/10/52
	DRAWING: ONE	SHEET 1 OF 1

D