

KNOW ALL MEN BY THESE PRESENTS, that ALTON J. HEINER and GARY PURSER, whose address is 907 BOON STREET, KILLEEN, TEXAS, being the sole owners of that certain 54.345 acre tract of land in Bell County, Texas, part of the R. Cunningham Survey, Abstract No. 158, which is more fully described in the dedication of HYMESA ESTATES, PHASE FIVE, as shown by the plat hereof, attached hereto, and made a part hereof, and approved by the City Council of the City of Killeen, Bell County, Texas, and ALTON J. HEINER and GARY PURSER do hereby adopt said HYMESA ESTATES, PHASE FIVE, as an addition to the City of Killeen, Bell County, Texas, and hereby dedicated to said city all streets, avenues, roads, drives and alleys shown on said plat, the same to be used as public thoroughfares and for the installation and maintenance of public utilities when and as authorized by the City of Killeen. The utility easements shown on said plat are dedicated to said city for the installation and maintenance of any and all public utilities, which the city may install or permit to be installed or maintained.

ALTON J. HEINER  
GARY PURSER

BEFORE ME, the undersigned, a Notary Public in and for said County and State, on this day personally appeared ALTON J. HEINER and GARY PURSER, known to me to be the person whose name is subscribed to the foregoing instrument and acknowledged to me that the same was the act of said ALTON J. HEINER and GARY PURSER, and that they executed the same for the purpose and consideration therein expressed.

GIVEN UNDER MY HAND AND SEAL OF OFFICE, this 3rd day of February, 1994 A.D.

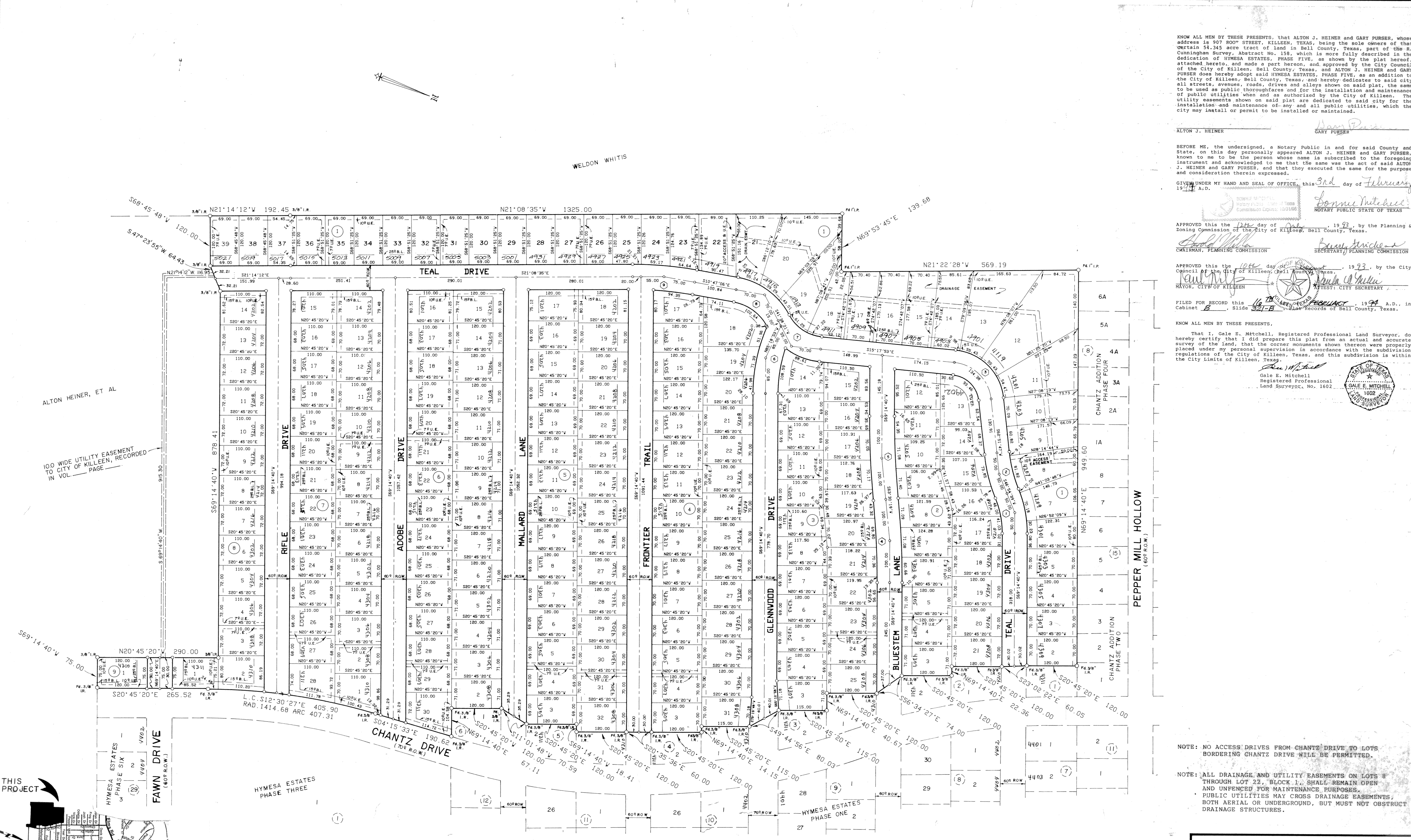
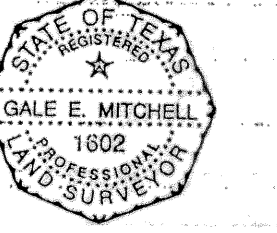
Notary Public State of Texas  
Bonnie Mitchell  
NOTARY PUBLIC STATE OF TEXAS

APPROVED this the 11th day of Feb., 1993, by the Planning & Zoning Commission of the City of Killeen, Bell County, Texas.  
Chairman, Planning Commission  
Secretary, Planning Commission

APPROVED this the 10th day of Feb., 1993, by the City Council of the City of Killeen, Bell County, Texas.  
Mayor, City of Killeen  
City Secretary

FILED FOR RECORD this 16th day of February, 1994 A.D., in Cabinet B, Slide 32-B, Public Records of Bell County, Texas.

KNOW ALL MEN BY THESE PRESENTS, That I, Gale E. Mitchell, Registered Professional Land Surveyor, do hereby certify that I did prepare this plat from an actual and accurate survey of the land, that the corner monuments shown thereon were properly placed under my personal supervision in accordance with the subdivision regulations of the City of Killeen, Texas, and this subdivision is within the City Limits of Killeen, Texas.  
Gale E. Mitchell  
Registered Professional Land Surveyor, No. 1602

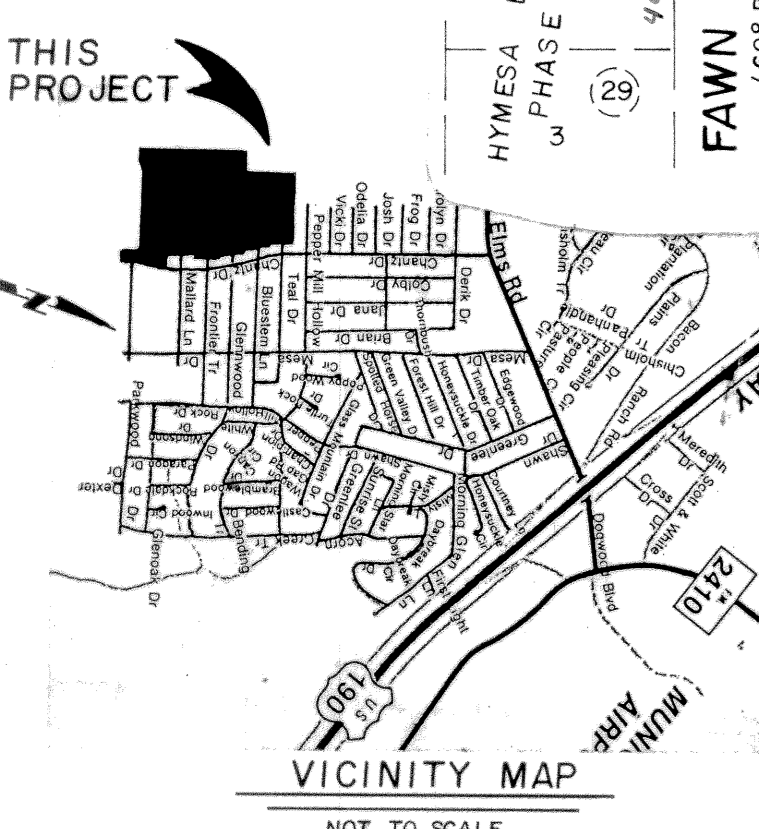


ALTON HEINER, ET AL

100 WIDE UTILITY EASEMENT TO CITY OF KILLEEN, RECORDED IN VOL. \_\_\_\_\_ PAGE \_\_\_\_\_

NOTE: NO ACCESS DRIVES FROM CHANTZ DRIVE TO LOTS BORDERING CHANTZ DRIVE WILL BE PERMITTED.

NOTE: ALL DRAINAGE AND UTILITY EASEMENTS ON LOTS 8 THROUGH LOT 22, BLOCK 1, SHALL REMAIN OPEN AND UNFENCED FOR MAINTENANCE PURPOSES. PUBLIC UTILITIES MAY CROSS DRAINAGE EASEMENTS, BOTH AERIAL OR UNDERGROUND, BUT MUST NOT OBSTRUCT DRAINAGE STRUCTURES.



CURVE CHART

No.	INNER	€	OUTER	No.	INNER	€	OUTER	No.	INNER	€	OUTER
1	22° 20' 01"	223.29	223.29	3	78° 09' 40"	128.51	128.51	6	18° 14' 00"	346.35	346.35
2	15° 57' 08"	45.80	90.71	4	05° 44' 21"	196.49	196.49	7	56° 56' 14"	99.09	99.09
3	22° 20' 01"	223.29	223.29	5	05° 44' 21"	196.49	196.49	8	52° 25' 27"	112.18	112.18
4	15° 57' 08"	45.80	90.71	6	18° 14' 00"	346.35	346.35	9	06° 48' 43"	94.29	94.29
5	22° 20' 01"	223.29	223.29	7	56° 56' 14"	99.09	99.09	10	10° 21' 29"	102.64	102.64
6	15° 57' 08"	45.80	90.71	8	52° 25' 27"	112.18	112.18	11	52° 25' 27"	112.18	112.18
7	22° 20' 01"	223.29	223.29	9	06° 48' 43"	94.29	94.29	12	52° 25' 27"	112.18	112.18
8	15° 57' 08"	45.80	90.71	10	10° 21' 29"	102.64	102.64	13	52° 25' 27"	112.18	112.18
9	22° 20' 01"	223.29	223.29	11	52° 25' 27"	112.18	112.18	14	52° 25' 27"	112.18	112.18
10	15° 57' 08"	45.80	90.71	12	52° 25' 27"	112.18	112.18	15	52° 25' 27"	112.18	112.18
11	22° 20' 01"	223.29	223.29	13	52° 25' 27"	112.18	112.18	16	52° 25' 27"	112.18	112.18
12	15° 57' 08"	45.80	90.71	14	52° 25' 27"	112.18	112.18	17	52° 25' 27"	112.18	112.18
13	22° 20' 01"	223.29	223.29	15	52° 25' 27"	112.18	112.18	18	52° 25' 27"	112.18	112.18
14	15° 57' 08"	45.80	90.71	16	52° 25' 27"	112.18	112.18	19	52° 25' 27"	112.18	112.18
15	22° 20' 01"	223.29	223.29	17	52° 25' 27"	112.18	112.18	20	52° 25' 27"	112.18	112.18
16	15° 57' 08"	45.80	90.71	18	52° 25' 27"	112.18	112.18	21	52° 25' 27"	112.18	112.18
17	22° 20' 01"	223.29	223.29	19	52° 25' 27"	112.18	112.18	22	52° 25' 27"	112.18	112.18
18	15° 57' 08"	45.80	90.71	20	52° 25' 27"	112.18	112.18	23	52° 25' 27"	112.18	112.18
19	22° 20' 01"	223.29	223.29	21	52° 25' 27"	112.18	112.18	24	52° 25' 27"	112.18	112.18
20	15° 57' 08"	45.80	90.71	22	52° 25' 27"	112.18	112.18	25	52° 25' 27"	112.18	112.18
21	22° 20' 01"	223.29	223.29	23	52° 25' 27"	112.18	112.18	26	52° 25' 27"	112.18	112.18
22	15° 57' 08"	45.80	90.71	24	52° 25' 27"	112.18	112.18	27	52° 25' 27"	112.18	112.18
23	22° 20' 01"	223.29	223.29	25	52° 25' 27"	112.18	112.18	28	52° 25' 27"	112.18	112.18
24	15° 57' 08"	45.80	90.71	26	52° 25' 27"	112.18	112.18	29	52° 25' 27"	112.18	112.18
25	22° 20' 01"	223.29	223.29	27	52° 25' 27"	112.18	112.18	30	52° 25' 27"	112.18	112.18
26	15° 57' 08"	45.80	90.71	28	52° 25' 27"	112.18	112.18	31	52° 25' 27"	112.18	112.18
27	22° 20' 01"	223.29	223.29	29	52° 25' 27"	112.18	112.18	32	52° 25' 27"	112.18	112.18
28	15° 57' 08"	45.80	90.71	30	52° 25' 27"	112.18	112.18	33	52° 25' 27"	112.18	112.18
29	22° 20' 01"	223.29	223.29	31	52° 25' 27"	112.18	112.18	34	52° 25' 27"	112.18	112.18
30	15° 57' 08"	45.80	90.71	32	52° 25' 27"	112.18	112.18	35	52° 25' 27"	112.18	112.18
31	22° 20' 01"	223.29	223.29	33	52° 25' 27"	112.18	112.18	36	52° 25' 27"	112.18	112.18
32	15° 57' 08"	45.80	90.71	34	52° 25' 27"	112.18	112.18	37	52° 25' 27"	112.18	112.18
33	22° 20' 01"	223.29	223.29	35	52° 25' 27"	112.18	112.18	38	52° 25' 27"	112.18	112.18
34	15° 57' 08"	45.80	90.71	36	52° 25' 27"	112.18	112.18	39	52° 25' 27"	112.18	112.18
35	22° 20' 01"	223.29	223.29	37	52° 25' 27"	112.18	112.18	40	52° 25' 27"	112.18	112.18

**HYMESA ESTATES**  
PHASE FIVE  
KILLEEN, BELL COUNTY, TEXAS

**MITCHELL & ASSOCIATES, INC.**  
ENGINEERING & SURVEYING

211 LOTS  
54.345 ACRES

DEVELOPER:

DATE: APR. 1993 SCALE: 1" = 100' DRAWN BY: REF. NO. 3079-D DWG. NO. 4882-D