

APPROVED THIS THE 2 DAY OF June, 1975
BY THE PLANNING COMMISSION OF THE CITY OF
KILLEEN, TEXAS.

Don Jurek
CHAIRMAN, PLANNING COMMISSION

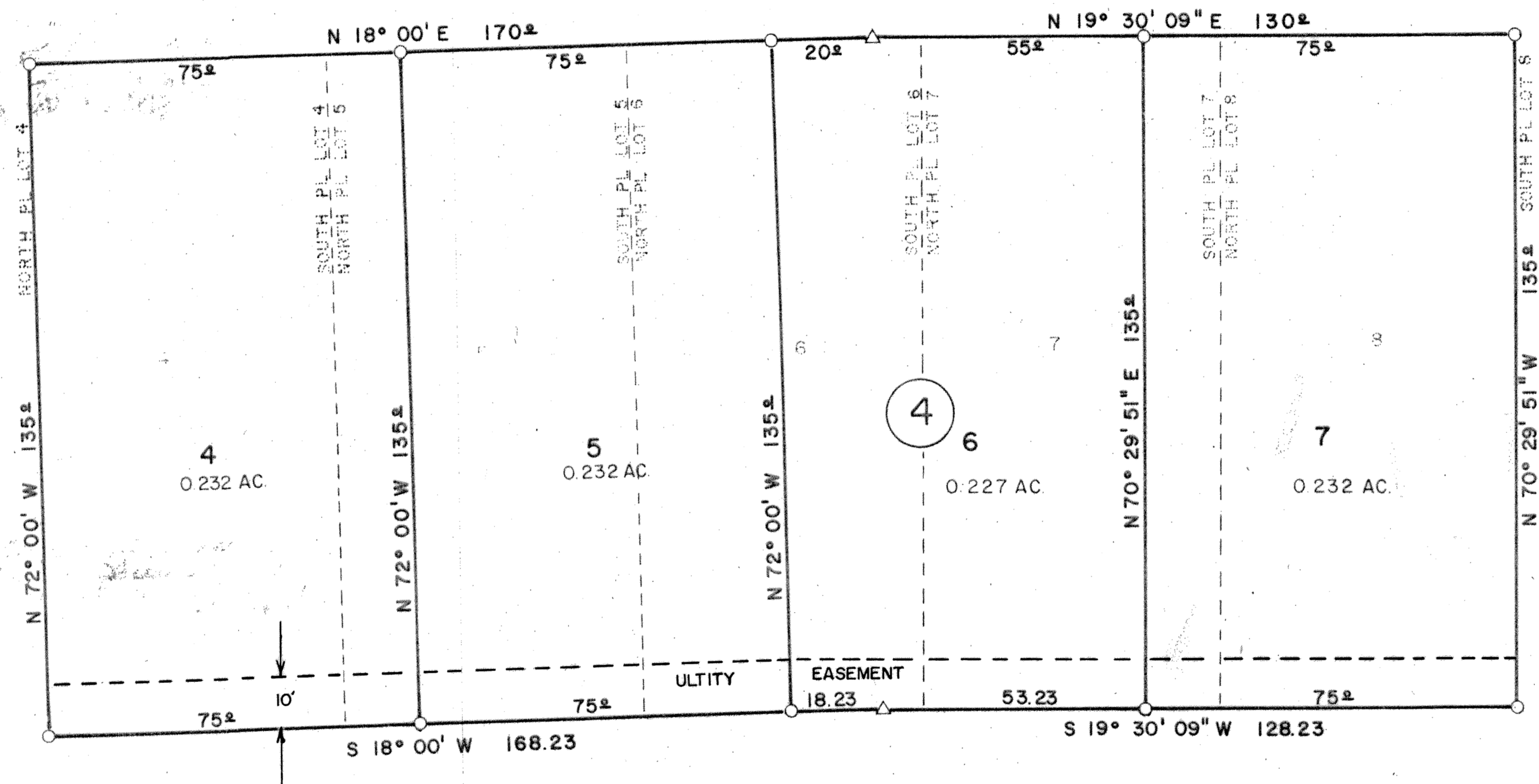
JM Keefe
SECRETARY, PLANNING COMMISSION

APPROVED THIS THE 10 DAY OF JUNE, 1975
BY THE CITY COUNCIL OF THE CITY OF
KILLEEN, TEXAS.

Bice Jurek
MAYOR

JH Norman
ATTEST CITY SECRETARY

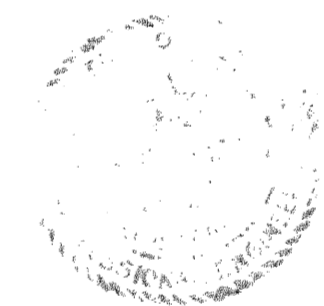
FILED FOR RECORD THIS 16th DAY OF JUNE, 1975,
IN PLAT BOOK 1330, PAGE 826, DEED RECORDS
OF BELL COUNTY, TEXAS.



STATE OF TEXAS
COUNTY OF BELL

KNOW ALL MEN BY THESE PRESENTS, THAT I,
CARL B. PEARSON, REGISTERED PROFESSIONAL
ENGINEER, DO HEREBY CERTIFY THAT I
PREPARED THIS PLAT FROM AN ACTUAL
AND ACCURATE SURVEY OF THE LAND AND
THAT THE CORNER MONUMENTS SHOWN
THEREON WERE PROPERLY PLACED UNDER
MY PERSONAL SUPERVISION IN ACCORDANCE
WITH THE SUBDIVISION REGULATIONS OF
THE CITY OF KILLEEN, TEXAS.

IN WITNESS THEREOF, MY HAND AND SEAL,
THIS THE 14TH DAY OF May, 1975.



Carl B. Pearson

LOTS 4, 5, 6, & 7		
A REPLAT OF LOTS 4, 5, 6, 7, & 8, BLOCK 4		
HOOD VIEW ADDITION		
KILLEEN, TEXAS		
DEVELOPER Hood View Development		
ENGINEER Temple Civil Engineering		
May 14, 1975	1" = 20'	D - 252