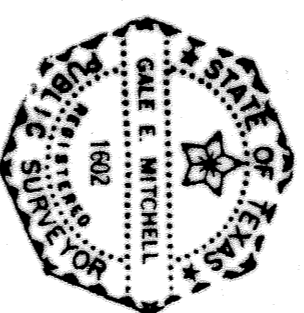
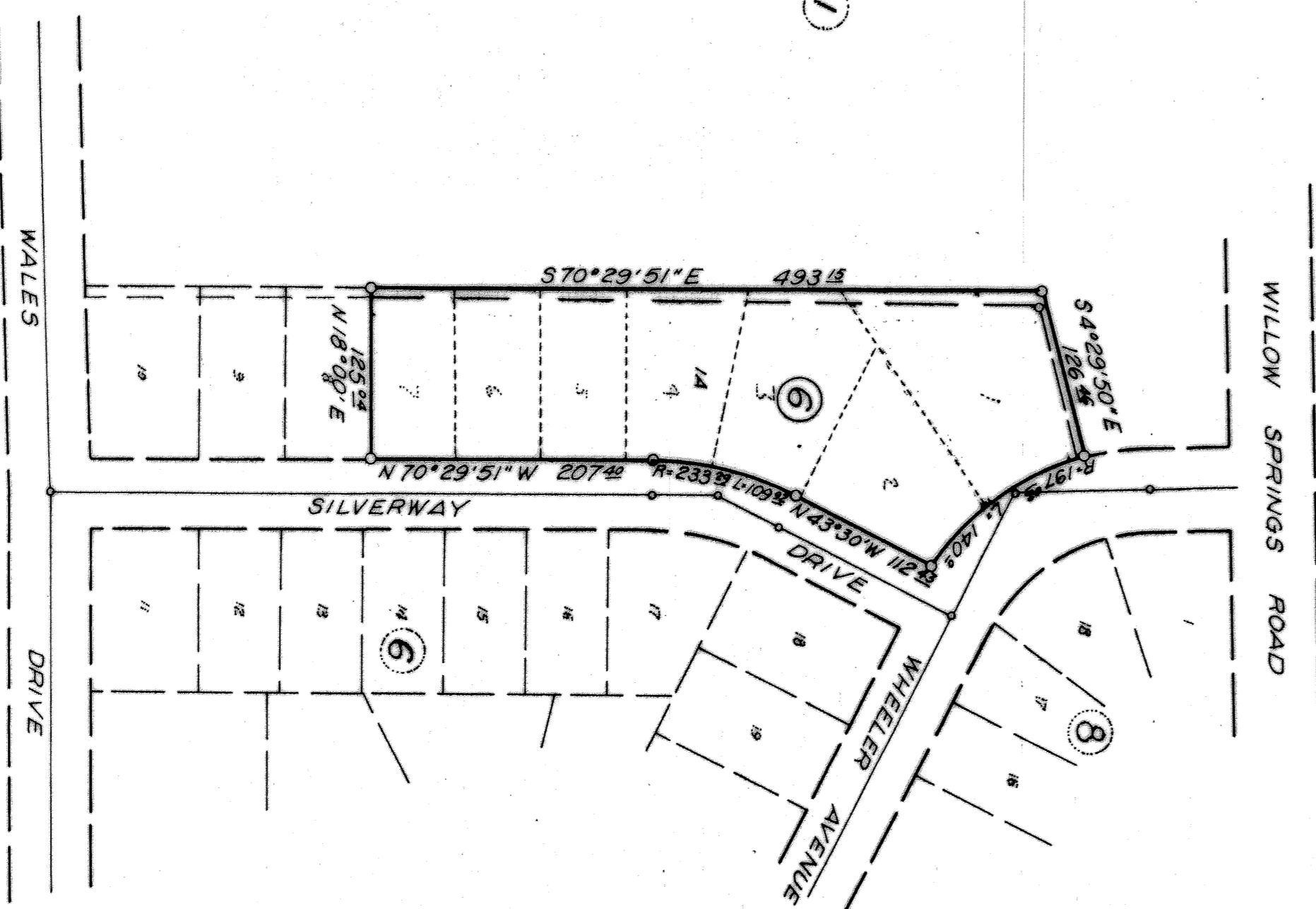
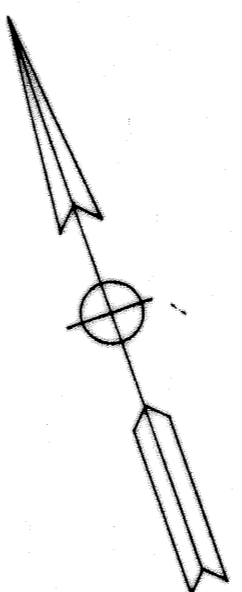


Know all men by these presents that I, Gale E. Mitchell, do hereby certify that I prepared this plat from an actual and accurate survey of the land and that the corner monuments shown thereon were properly placed under my personal supervision in accordance with the Subdivision Regulations of the City of Killeen, Texas.



*Gale E. Mitchell*



Approved this 16<sup>th</sup> day of August, 1971,  
by the Planning Commission of the City of  
Killeen, Texas.

*Don Zarok*  
Vice-Chairman, Planning Commission  
*Yvonne L. D. Roet*  
Secretary, Planning Commission

Approved this 23 day of August, 1971,  
by the City Council of the City of Killeen, Texas.

*John R. Penning*  
Mayor  
*H. J. Trickett*  
Attest, City Secretary

Filed for record this 15 day of Sept, 1971,  
in Plat Book 1146, Page 562, Deed Records,  
of Bell County, Texas.

<b>HOODVIEW ADDITION LOT 1A</b>	
A Resubdivision of Lots 1, 2, 3, 4, 5, 6, & 7, Block 6 in Hoodview Addition, Killeen, Texas	
Fred Williamson & Assoc, Inc	Surveyors
10 August 1971	1" = 100' 4029-C