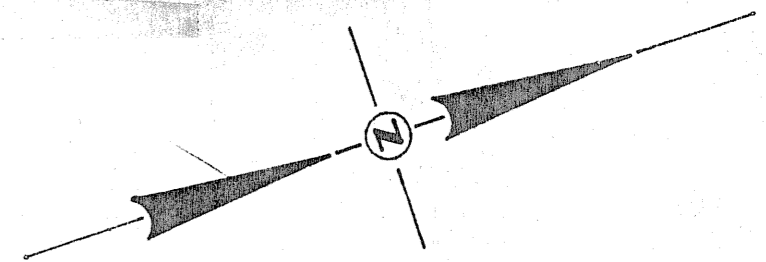
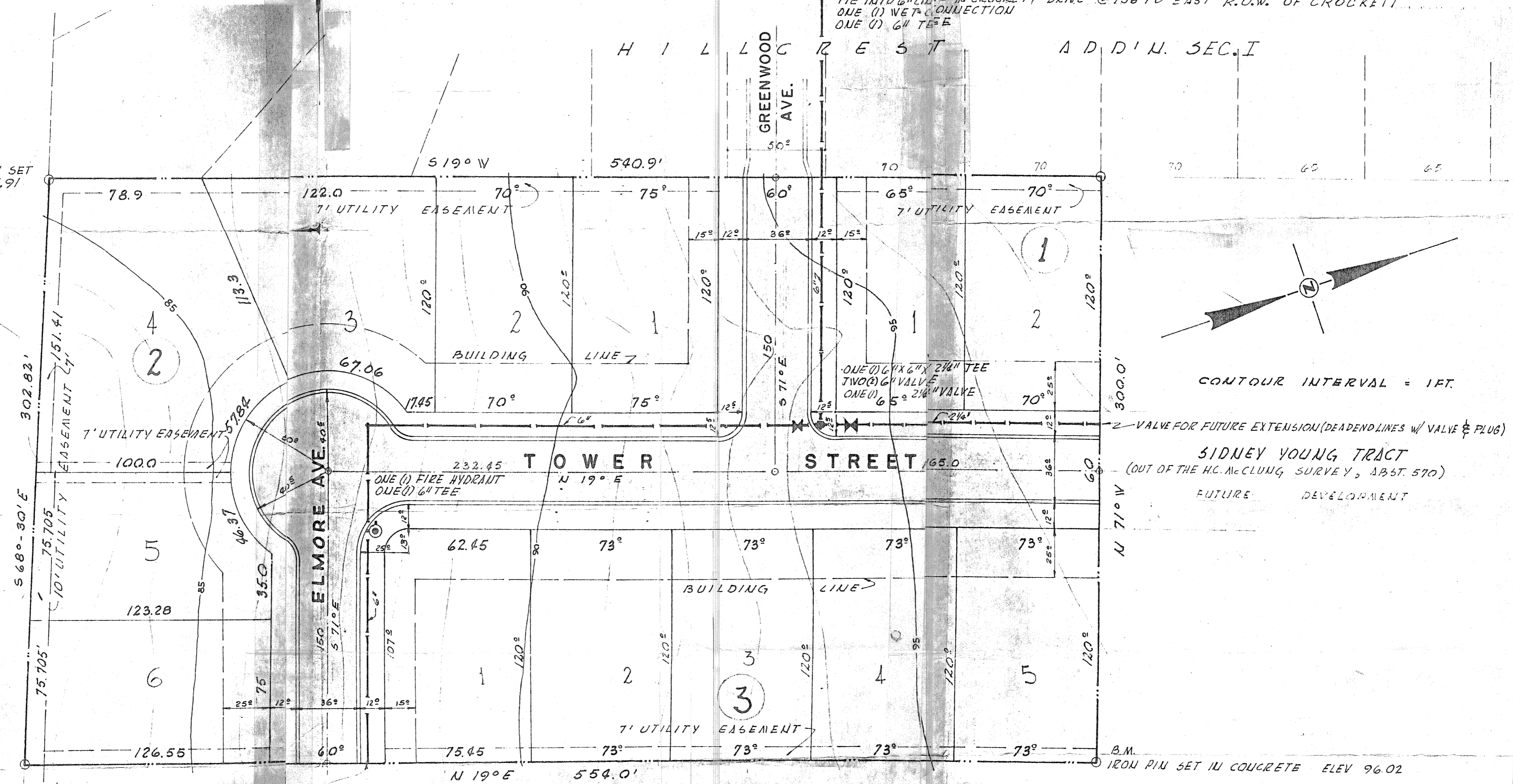


2/13

B.M. TOP OF IRON PIN SET IN CONCRETE 85.91

G. C. & S. F. R. R. (COUNTY DEED RECORDS BOOK 215 PAGE 437)



CONTOUR INTERVAL = 1 FT.

VALVE FOR FUTURE EXTENSION (DEAD END LINES W/ VALVE & PLUG)

SIDNEY YOUNG TRACT (OUT OF THE H.C. McCLUNG SURVEY, ABST. 570)

FUTURE DEVELOPMENT

B.M. IRON PIN SET IN CONCRETE ELEV 96.02

SIDNEY YOUNG TRACT (OUT OF THE H.C. McCLUNG SURVEY, ABST. 570)

### SHEET INDEX

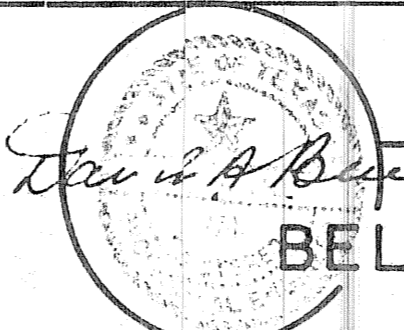
- ① SUBDIVISION PLAT & TOPOGRAPHY w/ BENCH MARKS WATER PLAN
- ② STREET PLAN & CENTER LINE PROFILES CURB & GUTTER DETAILS
- ③ SANITARY SEWER PLAN & PROFILE

## HILLCREST ADDITION

SECTION TWO

### OWNERS

Sidney Earl Young & Billy J. Elmore



FROM THE OFFICE OF  
**BELL, THOMAS & ASSOCIATE**  
 KILLEEN TEXAS

SUBDIVISION PLAT	
Scale 1" = 40'	Date 11-1-61
Sheet No 1 OF 3	Drawn by J.J.S.