

KILLEEN PUBLIC SCHOOL

HILLCREST ADDITION

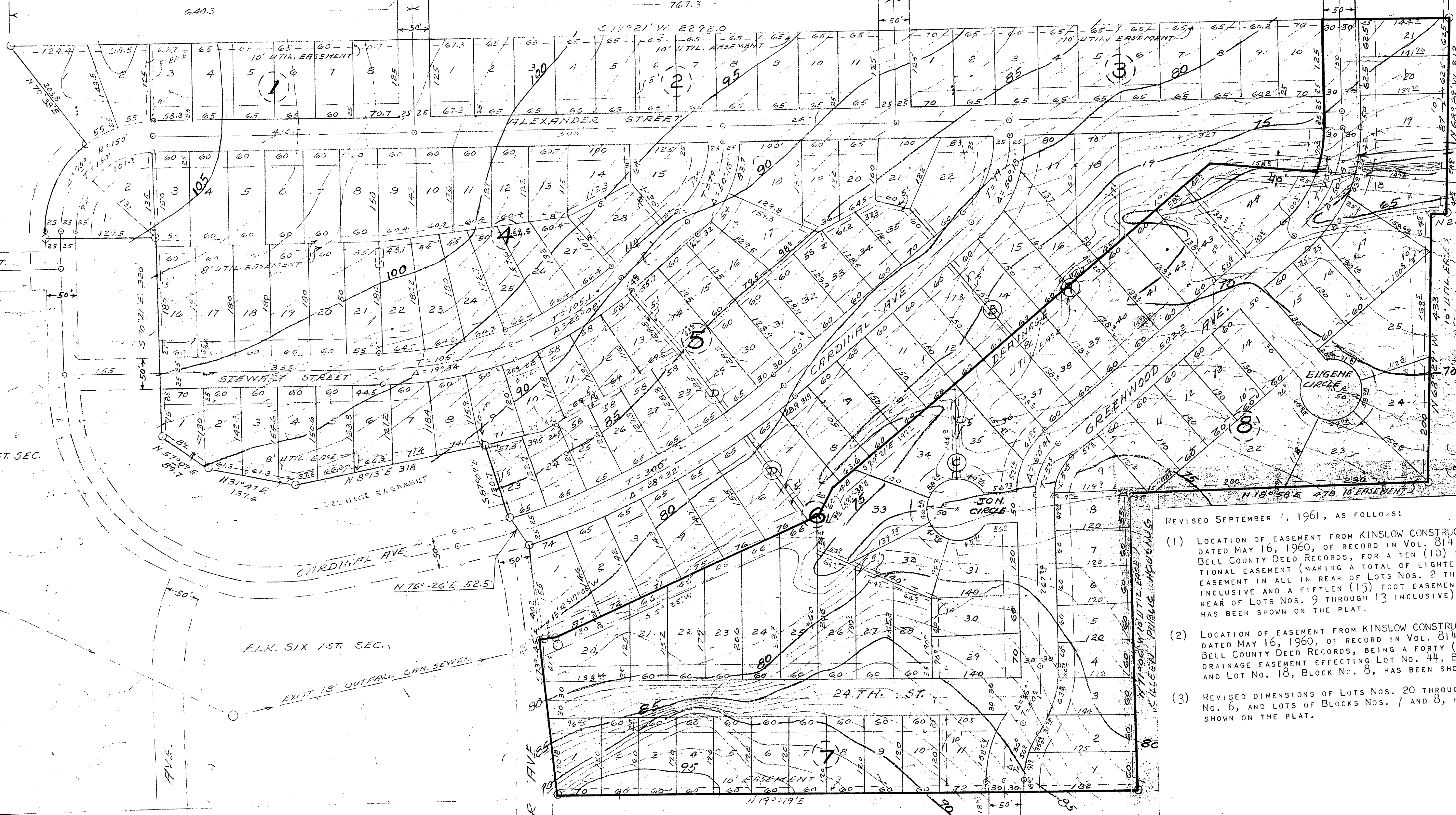
SCALE 1"=100'

RANCIER AVENUE

STONE ST.

ELKWOOD ST.

GREENWOOD AVE.



BLK. FIVE 1ST. SEC.

BLK. SIX 1ST. SEC.

- REVISED SEPTEMBER 7, 1961, AS FOLLOWS:
- (1) LOCATION OF EASEMENT FROM KINSLOW CONSTRUCTION COMPANY DATED MAY 16, 1960, OF RECORD IN VOL. 814, PAGE 42, BELL COUNTY DEED RECORDS, FOR A TEN (10) FOOT ADDITIONAL EASEMENT (MAKING A TOTAL OF EIGHTEEN (18) FOOT EASEMENT IN ALL IN REAR OF LOTS NOS. 2 THROUGH 8 INCLUSIVE AND A FIFTEEN (15) FOOT EASEMENT IN ALL IN REAR OF LOTS NOS. 9 THROUGH 13 INCLUSIVE), BLOCK NO. 5, HAS BEEN SHOWN ON THE PLAT.
  - (2) LOCATION OF EASEMENT FROM KINSLOW CONSTRUCTION COMPANY DATED MAY 16, 1960, OF RECORD IN VOL. 814, PAGE 41, BELL COUNTY DEED RECORDS, BEING A FORTY (40) FOOT DRAINAGE EASEMENT EFFECTING LOT NO. 44, BLOCK NO. 6, AND LOT NO. 18, BLOCK NO. 8, HAS BEEN SHOWN ON THE PLAT.
  - (3) REVISED DIMENSIONS OF LOTS NOS. 20 THROUGH 44, BLOCK NO. 6, AND LOTS OF BLOCKS NOS. 7 AND 8, HAVE BEEN SHOWN ON THE PLAT.

BELL, THOMAS & ASSOCIATES

Designed By:	HIGHLANDALE ADDITION
Drawn By:	SECOND SECTION
	KILLEEN, TEXAS
	JAN 2 1961

DITCH SECTION EASEMENT "A"

DITCH SECTION EASEMENTS B, C, & D