

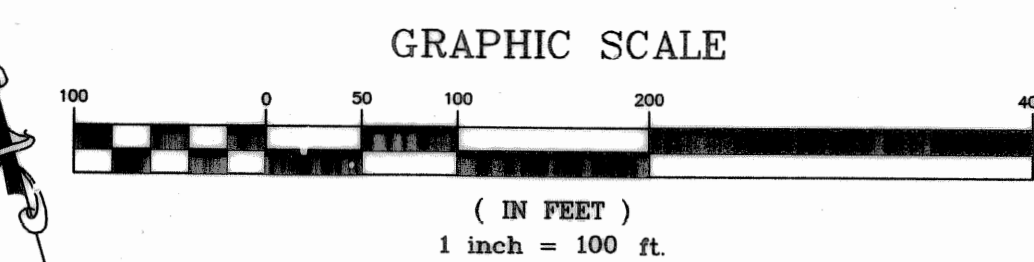
**NOTES:**  
 ALL PROPERTY CORNERS ARE 3/8" IR & CAP STAMPED "MITCHELL & ASSOCIATES, KILLEEN", UNLESS OTHERWISE SPECIFIED.  
 ALL INTERIOR LOT CORNERS MARKED WITH 1/2" IR & CAP STAMPED "MITCHELL & ASSOCIATES, KILLEEN" SET AFTER CONSTRUCTION COMPLETED.

**CURVE TABLE**

CURVE	CHORD BEARING	CHORD LENGTH	RADIUS	TANGENT	DELTA
C1	N42°34'27"W	60.07'	62.31'	60.00'	34.70'
C2	S13°08'09"E	53.53'	53.53'	4000.00'	26.76'
C3	S10°47'10"E	15.35'	15.35'	300.00'	7.68'

**LINE TABLE**

LINE	LENGTH	BEARING
L1	20.00'	S16°04'31"W
L2	21.34'	S16°04'31"W
L3	30.00'	S73°55'29"E



ACE M. TURLAND  
 (VOL. 4484, PAGE 267)

ACE M. TURLAND  
 (VOL. 4484, PAGE 267)

No.	DATE	REVISIONS
1	10/22/08	MATCH FOR REC RAS
2	10/15/08	REV COMMENTS, REVISIONS
3	9/17/08	CITY OF KILLEEN COMMENTS
4		REVISIONS

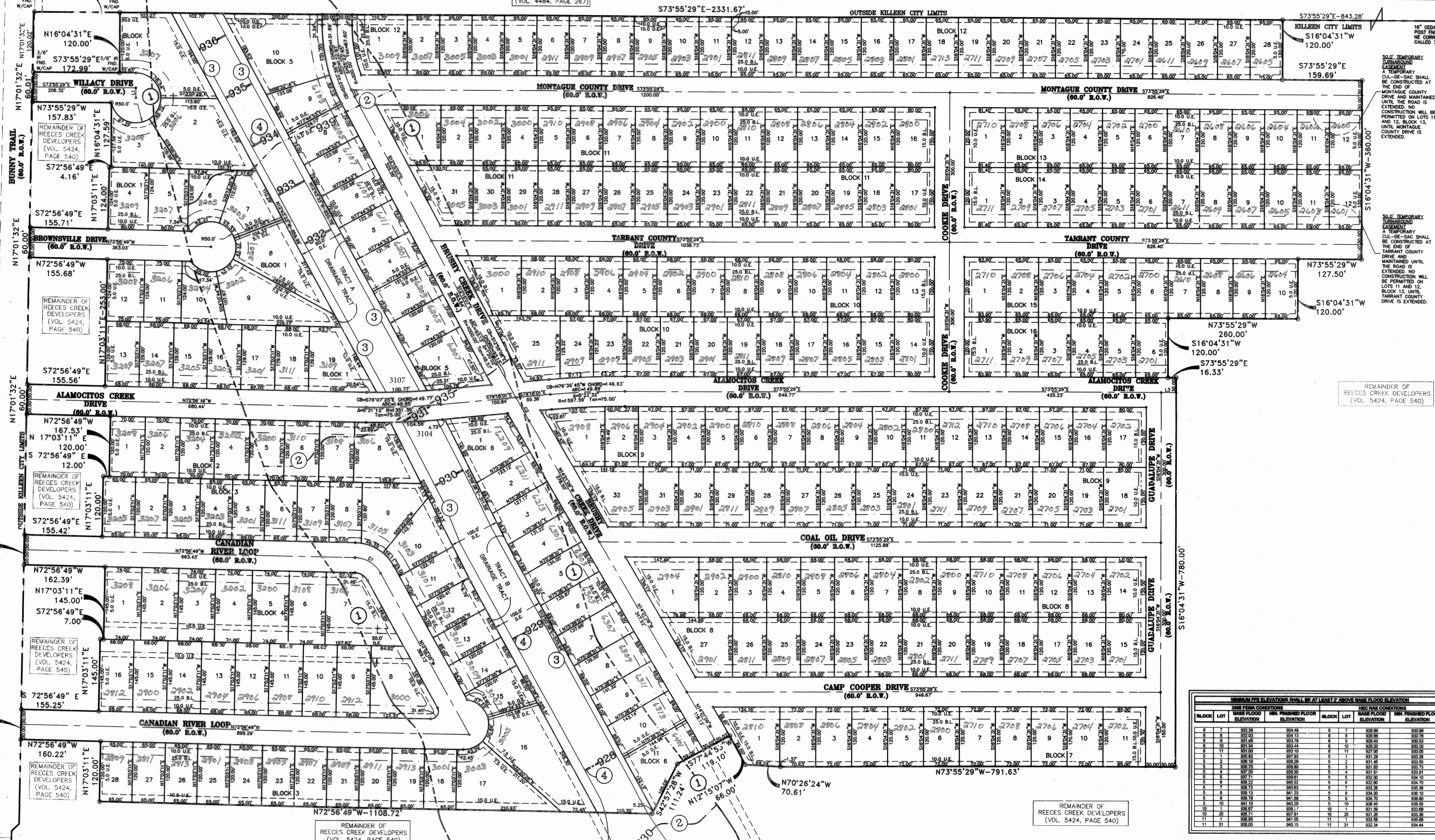
**GOODNIGHT RANCH ADDITION  
 PHASE SIX**  
 BEING A REPEAT OF ALL OF GOODNIGHT RANCH ADDITION PHASE 2 AND ALL OF GOODNIGHT RANCH ADDITION PHASE 3  
 KILLEEN, BELL COUNTY, TEXAS

**FINAL PLAT**



**MITCHELL & ASSOCIATES, INC.**  
 ENGINEERING & SURVEYING  
 102 N. COLLEGE STREET  
 KILLEEN, TEXAS 76541  
 PHONE: (254) 634-5541  
 FAX: (254) 634-2141

DWG No. 08-199-D  
 DATE: MAY 2008  
 SCALE: 1"=100'  
 REVISIONS: 05-291-D  
 AREA: 81,276 AC.  
 SHEET P2 OF P3



The Bell County Tax Appraisal District, the taxing authority for all entities in Bell County, Texas does hereby certify that there are currently no delinquent taxes due or owing on the property described by this plat.

Dated this 18th day of December, A.D. 2008

BELL COUNTY TAX APPRAISAL DISTRICT  
 BY: Tony T. Lewis

FILED FOR RECORD this 18th day of December, 2008, in Cabinet D, Slide 252-C, 352-A, Plat Records of Bell County, Texas. Dedication Instrument in Instrument # 2208-000414-75, Deed Records of Bell County, Texas.

**FLOOD PLAIN DATA**

- APPROXIMATE LIMITS OF 100 YEAR FLOODPLAIN BOUNDARY, ZONE "AE", F.E.M.A PANEL 48027C0260E DATED SEPTEMBER 26, 2008.
- BASE FLOOD ELEVATIONS PER F.E.M.A PANEL 48027C0260E DATED SEPTEMBER 26, 2008.
- APPROXIMATE LIMITS OF 100-YEAR FLOODPLAIN BY HEC-RAS COMPUTATION (ALSO IDENTIFY AS TRACT A & B)
- BASE FLOOD ELEVATIONS PER HEC RAS COMPUTATION BY MITCHELL & ASSOCIATES, DATED 10/11/2006

**NOTE:**  
 A FLOODPLAIN DEVELOPMENT PERMIT SHALL BE OBTAINED PRIOR TO ANY DEVELOPMENT (INCLUDING FILL). IN ADDITION, A LETTER OF "NO RISE" SHALL BE SUBMITTED WITH THE FLOODPLAIN DEVELOPMENT PERMIT.

**MINIMUM F.F.E. ELEVATIONS SHALL BE AT LEAST 2' ABOVE BASE FLOOD ELEVATION**

2006 FEMA CONDITIONS	HEC RAS CONDITIONS	2006 FEMA CONDITIONS	HEC RAS CONDITIONS
BLOCK	LOT	BASE FLOOD ELEVATION	MIN. FINISHED FLOOR ELEVATION
1	1	941.82	943.82
1	2	940.50	942.50
1	3	939.17	941.17
1	4	937.84	939.84
1	5	936.51	938.51
1	6	935.18	937.18
1	7	933.85	935.85
1	8	932.52	934.52
1	9	931.19	933.19
1	10	929.86	931.86
1	11	928.53	930.53
1	12	927.20	929.20
1	13	925.87	927.87
1	14	924.54	926.54
1	15	923.21	925.21
1	16	921.88	923.88
1	17	920.55	922.55
1	18	919.22	921.22
1	19	917.89	919.89
1	20	916.56	918.56
1	21	915.23	917.23
1	22	913.90	915.90
1	23	912.57	914.57
1	24	911.24	913.24
1	25	909.91	911.91
1	26	908.58	910.58
1	27	907.25	909.25
1	28	905.92	907.92
1	29	904.59	906.59
1	30	903.26	905.26
1	31	901.93	903.93
1	32	900.60	902.60

**MINIMUM F.F.E. ELEVATIONS SHALL BE AT LEAST 2' ABOVE BASE FLOOD ELEVATION**

2006 FEMA CONDITIONS	HEC RAS CONDITIONS	2006 FEMA CONDITIONS	HEC RAS CONDITIONS
BLOCK	LOT	BASE FLOOD ELEVATION	MIN. FINISHED FLOOR ELEVATION
2	1	944.48	946.48
2	2	943.15	945.15
2	3	941.82	943.82
2	4	940.49	942.49
2	5	939.16	941.16
2	6	937.83	939.83
2	7	936.50	938.50
2	8	935.17	937.17
2	9	933.84	935.84
2	10	932.51	934.51
2	11	931.18	933.18
2	12	929.85	931.85
2	13	928.52	930.52
2	14	927.19	929.19
2	15	925.86	927.86
2	16	924.53	926.53
2	17	923.20	925.20
2	18	921.87	923.87
2	19	920.54	922.54
2	20	919.21	921.21
2	21	917.88	919.88
2	22	916.55	918.55
2	23	915.22	917.22
2	24	913.89	915.89
2	25	912.56	914.56
2	26	911.23	913.23
2	27	909.90	911.90
2	28	908.57	910.57
2	29	907.24	909.24
2	30	905.91	907.91
2	31	904.58	906.58
2	32	903.25	905.25
2	33	901.92	903.92
2	34	900.59	902.59

**MINIMUM F.F.E. ELEVATIONS SHALL BE AT LEAST 2' ABOVE BASE FLOOD ELEVATION**

2006 FEMA CONDITIONS	HEC RAS CONDITIONS	2006 FEMA CONDITIONS	HEC RAS CONDITIONS
BLOCK	LOT	BASE FLOOD ELEVATION	MIN. FINISHED FLOOR ELEVATION
3	1	948.14	950.14
3	2	946.81	948.81
3	3	945.48	947.48
3	4	944.15	946.15
3	5	942.82	944.82
3	6	941.49	943.49
3	7	940.16	942.16
3	8	938.83	940.83
3	9	937.50	939.50
3	10	936.17	938.17
3	11	934.84	936.84
3	12	933.51	935.51
3	13	932.18	934.18
3	14	930.85	932.85
3	15	929.52	931.52
3	16	928.19	930.19
3	17	926.86	928.86
3	18	925.53	927.53
3	19	924.20	926.20
3	20	922.87	924.87
3	21	921.54	923.54
3	22	920.21	922.21
3	23	918.88	920.88
3	24	917.55	919.55
3	25	916.22	918.22
3	26	914.89	916.89
3	27	913.56	915.56
3	28	912.23	914.23
3	29	910.90	912.90
3	30	909.57	911.57
3	31	908.24	910.24
3	32	906.91	908.91
3	33	905.58	907.58
3	34	904.25	906.25
3	35	902.92	904.92
3	36	901.59	903.59
3	37	900.26	902.26
3	38	898.93	900.93
3	39	897.60	899.60
3	40	896.27	898.27
3	41	894.94	896.94
3	42	893.61	895.61
3	43	892.28	894.28
3	44	890.95	892.95
3	45	889.62	891.62
3	46	888.29	890.29
3	47	886.96	888.96
3	48	885.63	887.63
3	49	884.30	886.30
3	50	882.97	884.97
3	51	881.64	883.64
3	52	880.31	882.31
3	53	878.98	880.98
3	54	877.65	879.65
3	55	876.32	878.32
3	56	874.99	876.99
3	57	873.66	875.66
3	58	872.33	874.33
3	59	871.00	873.00
3	60	869.67	871.67
3	61	868.34	870.34
3	62	867.01	869.01
3	63	865.68	867.68
3	64	864.35	866.35
3	65	863.02	865.02
3	66	861.69	863.69
3	67	860.36	862.36
3	68	859.03	861.03
3	69	857.70	859.70
3	70	856.37	858.37
3	71	855.04	857.04
3	72	853.71	855.71
3	73	852.38	854.38
3	74	851.05	853.05
3	75	849.72	851.72
3	76	848.39	850.39
3	77	847.06	849.06
3	78	845.73	847.73
3	79	844.40	846.40
3	80	843.07	845.07
3	81	841.74	843.74
3	82	840.41	842.41
3	83	839.08	841.08
3	84	837.75	839.75
3	85	836.42	838.42
3	86	835.09	837.09
3	87	833.76	835.76
3	88	832.43	834.43
3	89	831.10	833.10
3	90	829.77	831.77
3	91	828.44	830.44
3	92	827.11	829.11
3	93	825.78	827.78
3	94	824.45	826.45
3	95	823.12	825.12
3	96	821.79	823.79
3	97	820.46	822.46
3	98	819.13	821.13
3	99	817.80	819.80
3	100	816.47	818.47