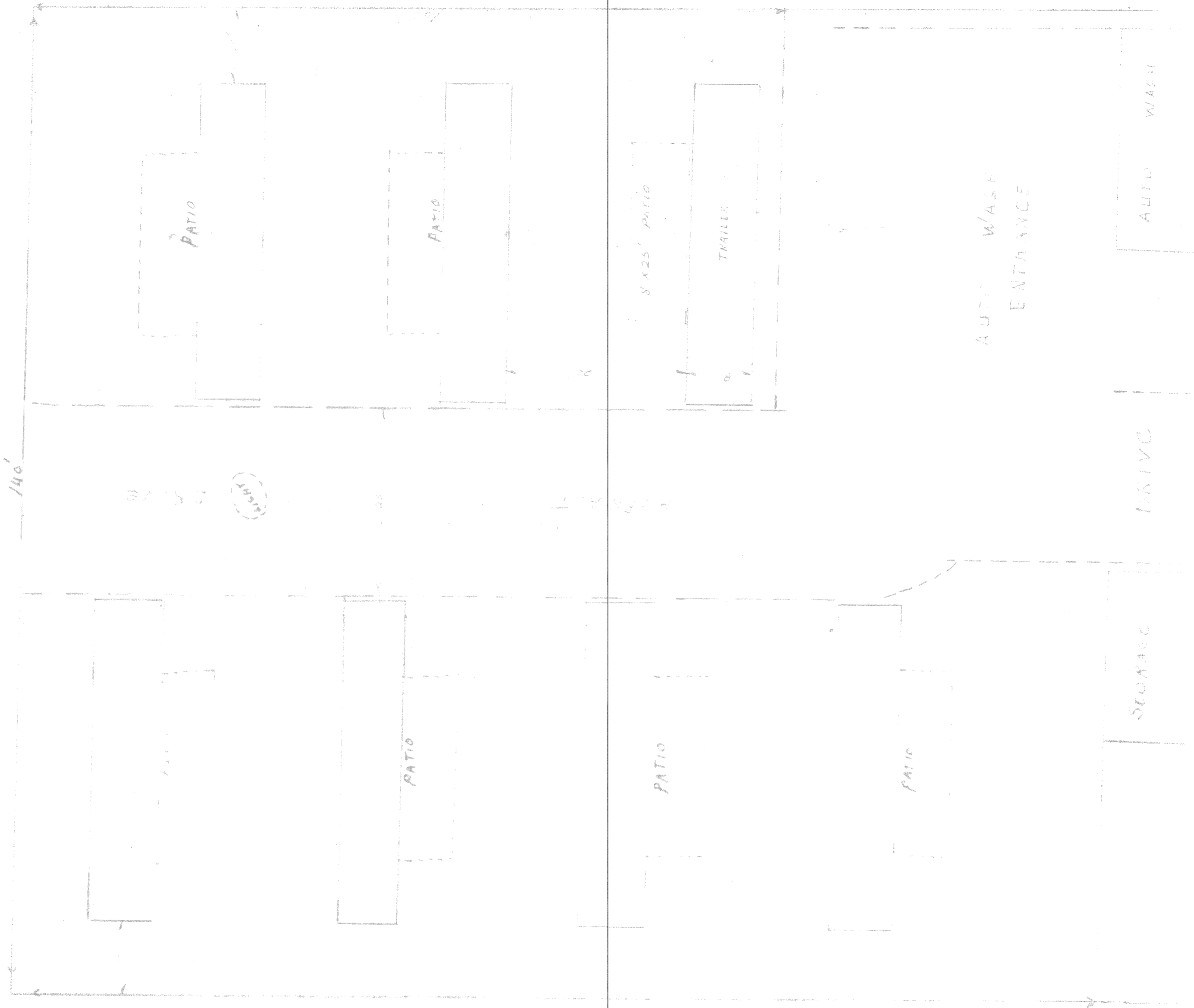


CURT'S MOBILE HOMES
112 SO. 2ND
SCALE - 1" = 10'

C.F. HOLD PROP.



KELLY ELAM COURTS

APPROVED SUBJECT TO CONTRACT REQUIREMENTS
CITY OF KILLEEN, TEXAS

BY
DATE 8-26-63
APPROVED *Ray J. Terrell*
DIRECTOR PUBLIC WORKS

APPROVED BY CITY COUNCIL
DATE _____ MAYOR _____

APPROVED
C.F. HOLD PROP.