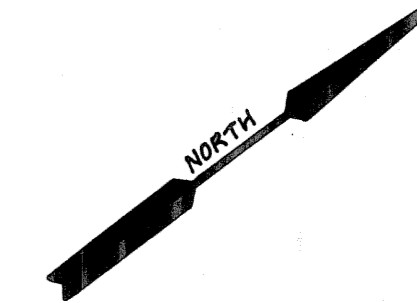
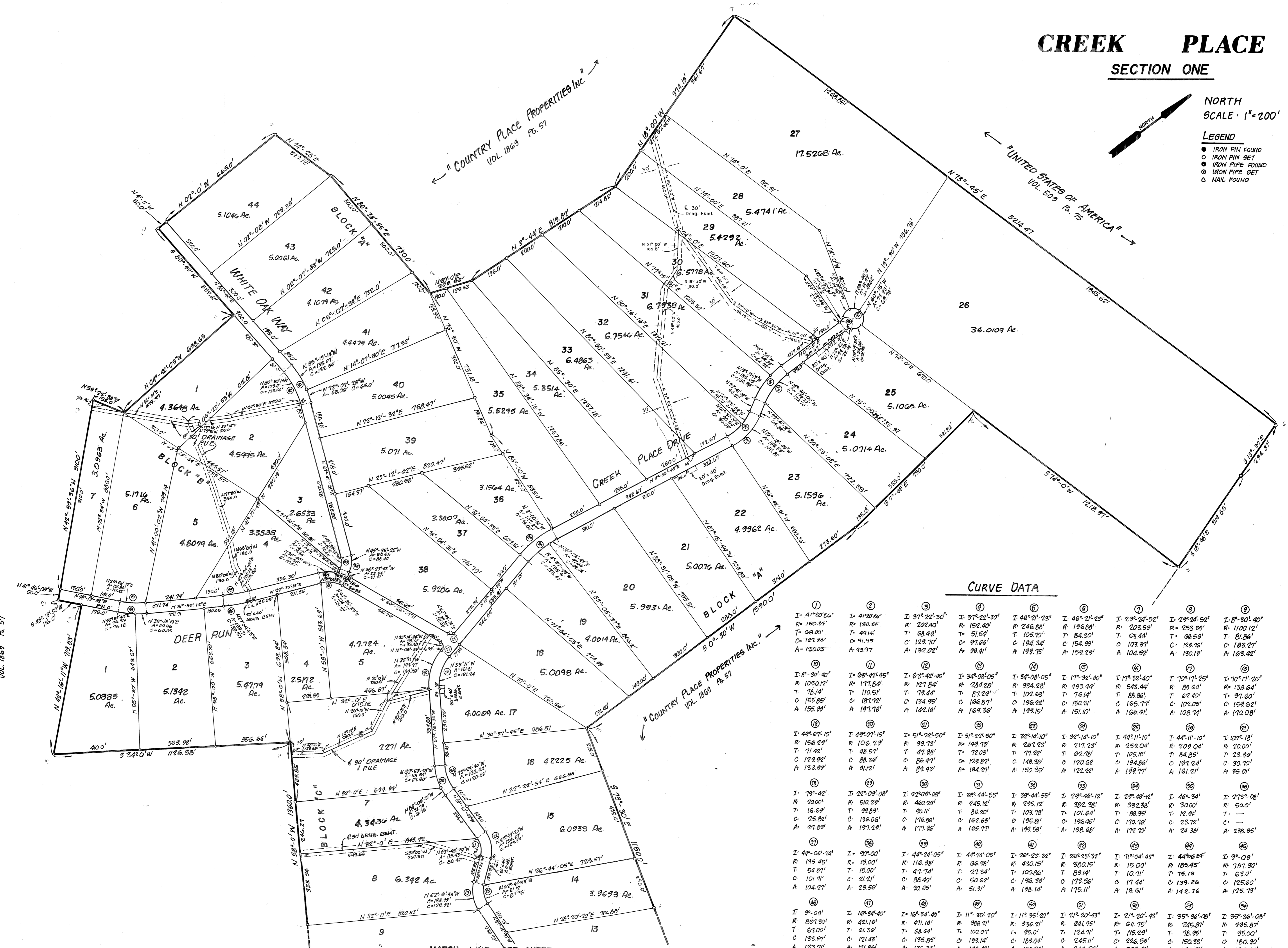


CREEK PLACE SECTION ONE



NORTH
SCALE: 1"=200'

- LEGEND**
- IRON PIN FOUND
 - IRON PIN SET
 - ⊙ IRON PIPE FOUND
 - ⊙ IRON PIPE SET
 - △ NAIL FOUND



CURVE DATA

① I: 41°20'26" R: 180.24' T: 98.00' C: 181.82' A: 130.03'	② I: 41°20'26" R: 180.24' T: 98.00' C: 181.82' A: 130.03'	③ I: 51°22'30" R: 202.40' T: 88.46' C: 187.95' A: 132.02'	④ I: 37°22'30" R: 152.40' T: 105.70' C: 97.66' A: 99.41'	⑤ I: 46°21'23" R: 246.88' T: 84.30' C: 194.34' A: 159.29'	⑥ I: 46°21'23" R: 246.88' T: 84.30' C: 194.34' A: 159.29'	⑦ I: 29°24'52" R: 203.59' T: 53.44' C: 103.37' A: 104.92'	⑧ I: 29°24'52" R: 203.59' T: 53.44' C: 103.37' A: 104.92'	⑨ I: 8°30'40" R: 110.12' T: 81.06' C: 183.27' A: 163.02'	⑩ I: 8°30'40" R: 110.12' T: 81.06' C: 183.27' A: 163.02'	⑪ I: 8°30'40" R: 110.12' T: 81.06' C: 183.27' A: 163.02'	⑫ I: 63°42'45" R: 177.84' T: 79.44' C: 187.72' A: 197.76'	⑬ I: 63°42'45" R: 177.84' T: 79.44' C: 187.72' A: 197.76'	⑭ I: 34°08'05" R: 234.28' T: 102.63' C: 196.22' A: 169.36'	⑮ I: 34°08'05" R: 234.28' T: 102.63' C: 196.22' A: 169.36'	⑯ I: 17°32'40" R: 493.44' T: 78.14' C: 150.51' A: 151.10'	⑰ I: 17°32'40" R: 493.44' T: 78.14' C: 150.51' A: 151.10'	⑱ I: 17°32'40" R: 493.44' T: 78.14' C: 150.51' A: 151.10'	⑲ I: 17°32'40" R: 493.44' T: 78.14' C: 150.51' A: 151.10'	⑳ I: 32°14'10" R: 267.23' T: 77.22' C: 148.38' A: 150.35'	㉑ I: 32°14'10" R: 267.23' T: 77.22' C: 148.38' A: 150.35'	㉒ I: 32°14'10" R: 267.23' T: 77.22' C: 148.38' A: 150.35'	㉓ I: 32°14'10" R: 267.23' T: 77.22' C: 148.38' A: 150.35'	㉔ I: 44°11'10" R: 209.04' T: 105.15' C: 120.62' A: 199.71'	㉕ I: 44°11'10" R: 209.04' T: 105.15' C: 120.62' A: 199.71'	㉖ I: 44°11'10" R: 209.04' T: 105.15' C: 120.62' A: 199.71'	㉗ I: 44°11'10" R: 209.04' T: 105.15' C: 120.62' A: 199.71'	㉘ I: 100°18' R: 23.96' T: 97.60' C: 159.62' A: 170.08'	㉙ I: 100°18' R: 23.96' T: 97.60' C: 159.62' A: 170.08'	㉚ I: 100°18' R: 23.96' T: 97.60' C: 159.62' A: 170.08'	㉛ I: 44°06'24" R: 30.00' T: 84.55' C: 102.05' A: 161.21'	㉜ I: 44°06'24" R: 30.00' T: 84.55' C: 102.05' A: 161.21'	㉝ I: 44°06'24" R: 30.00' T: 84.55' C: 102.05' A: 161.21'	㉞ I: 44°06'24" R: 30.00' T: 84.55' C: 102.05' A: 161.21'	㉟ I: 9°09' R: 787.30' T: 23.96' C: 125.60' A: 238.35'	㊱ I: 9°09' R: 787.30' T: 23.96' C: 125.60' A: 238.35'	㊲ I: 9°09' R: 787.30' T: 23.96' C: 125.60' A: 238.35'	㊳ I: 9°09' R: 787.30' T: 23.96' C: 125.60' A: 238.35'	㊴ I: 35°36'08" R: 295.87' T: 95.00' C: 180.20' A: 183.84'	㊵ I: 35°36'08" R: 295.87' T: 95.00' C: 180.20' A: 183.84'	㊶ I: 35°36'08" R: 295.87' T: 95.00' C: 180.20' A: 183.84'	㊷ I: 35°36'08" R: 295.87' T: 95.00' C: 180.20' A: 183.84'	㊸ I: 11°35'20" R: 382.15' T: 12.41' C: 173.56' A: 227.91'	㊹ I: 11°35'20" R: 382.15' T: 12.41' C: 173.56' A: 227.91'	㊺ I: 11°35'20" R: 382.15' T: 12.41' C: 173.56' A: 227.91'	㊻ I: 11°35'20" R: 382.15' T: 12.41' C: 173.56' A: 227.91'	㊼ I: 11°35'20" R: 382.15' T: 12.41' C: 173.56' A: 227.91'	㊽ I: 11°35'20" R: 382.15' T: 12.41' C: 173.56' A: 227.91'	㊾ I: 11°35'20" R: 382.15' T: 12.41' C: 173.56' A: 227.91'	㊿ I: 11°35'20" R: 382.15' T: 12.41' C: 173.56' A: 227.91'
--	--	--	---	--	--	--	--	---	---	---	--	--	---	---	--	--	--	--	--	--	--	--	---	---	---	---	---	---	---	---	---	---	---	--	--	--	--	--	--	--	--	--	--	--	--	--	--	--	--

MATCH LINE SEE SHEET 1