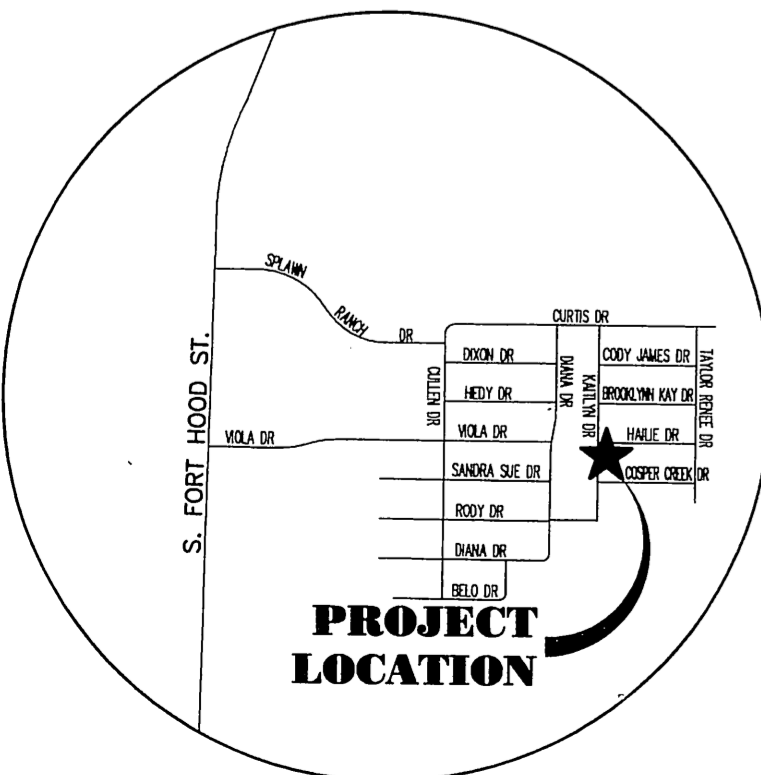
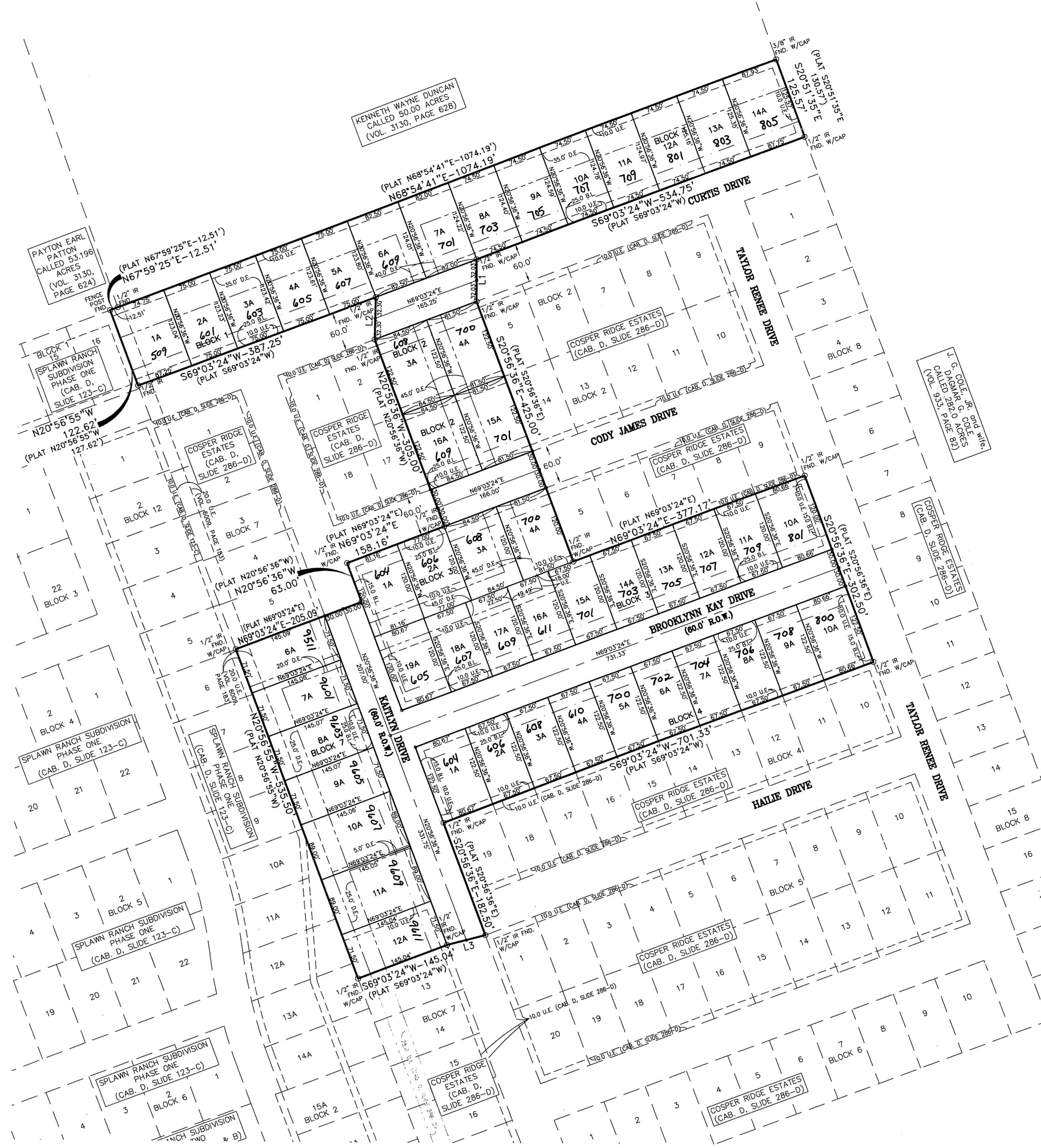


COSPER RIDGE ESTATES  
(CAB. D, SLIDE 286-D)  
SCALE: N.T.S.

GRAPHIC SCALE



( IN FEET )  
1 inch = 100 ft.



VICINITY MAP  
SCALE: N.T.S.

LINE	LENGTH	BEARING
L1	64.07'	S02°24'59"E
L2	64.61'	N00°49'47"E
L3	60.35'	S75°14'23"W

THE BEARINGS FOR THE ABOVE DESCRIPTION ARE BASED ON THE TEXAS STATE PLANE COORDINATE SYSTEM, CENTRAL ZONE, NAD 83, PER LEICA TEXAS SMART NET GPS OBSERVATIONS.

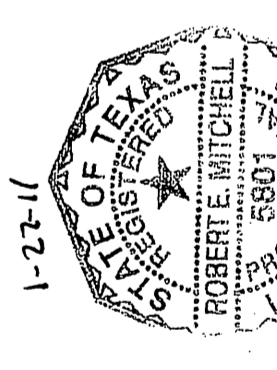
The Bell County Tax Appraisal District, the taxing authority for all entities in Bell County, Texas does hereby certify that there are currently no delinquent taxes due or owing on the property described by this plat.

Dated this 10<sup>th</sup> day of March, A.D. 2011

BELL COUNTY TAX APPRAISAL DISTRICT  
BY: *Melvin Mates*

FILED FOR RECORD this 29<sup>th</sup> day of March, 2011, in Cabinet D, Slide 317B+C, Plat Records of Bell County, Texas. Dedication Instrument in Instrument # 2011-00010351, Deed Records of Bell County, Texas.

**COSPER RIDGE ESTATES, PHASE TWO**  
BEING A REPLAT OF LOTS 1-14, BLOCK 1, LOTS 3-4 & 15-16, BLOCK 2, LOTS 1-4 & 10-18, BLOCK 3, LOTS 1-9, BLOCK 4 & LOTS 6-12, BLOCK 7, COSPER RIDGE ESTATES  
KILLEEN, BELL COUNTY, TEXAS



**MITCHELL & ASSOCIATES, INC.**  
ENGINEERING & SURVEYING  
102 N. COLLEGE  
KILLEEN, TEXAS 76541  
PHONE: (254) 634-5541  
FAX: (254) 634-2141  
TEXAS BOARD OF PROFESSIONAL ENGINEERS FIRM REGISTRATION NO. 3241  
P. E. R. L. S. FIRM REGISTRATION NO. 100294-00



No.	DATE	REVISIONS	BY
2	2/23/2011	CITY OF KILLEEN COMMENTS	FRB
1	2/19/2011	CITY OF KILLEEN COMMENTS	FRB
		REMARKS	
		REVISIONS	

SHEET TITLE: **FINAL PLAT**

1-21-11

DWG No.	DATE	SCALE	REF.	AREA
11-06-D	JAN. 2011	1"=100'	09-285-D	12,777 AC.
			5 BLOCKS	
			49 LOTS	