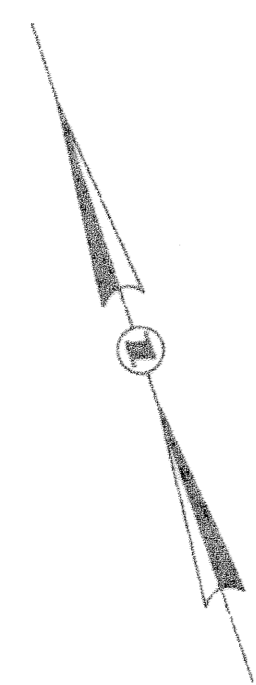
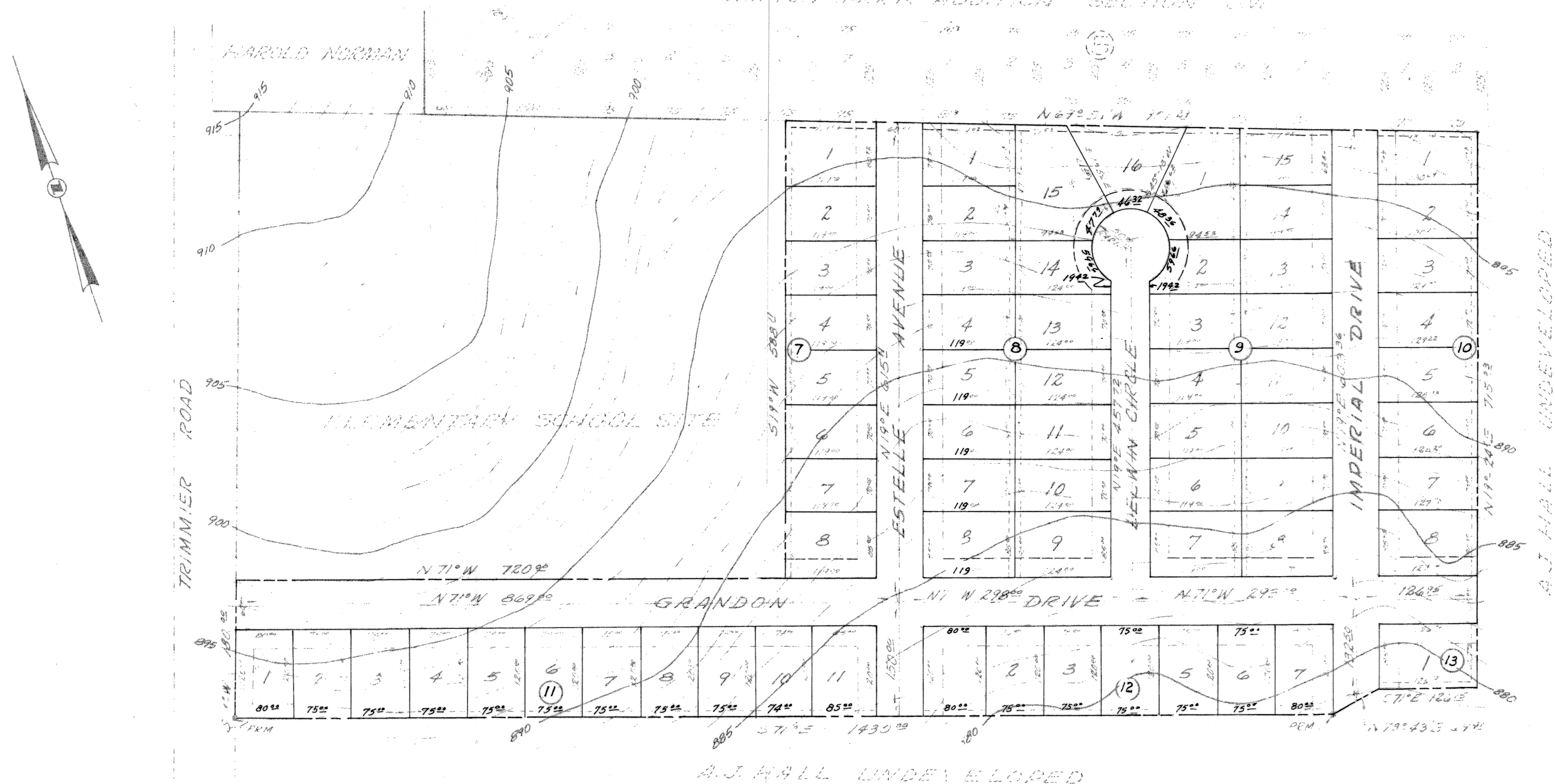


CLIFTON PARK ADDITION SECTION 24



REVISION
Block Number's Only

APPROVED: CITY PLANNING COMMISSION
Date 7 Dec '64 Chairman Ray Chase

APPROVED: CITY PLANNING COMMISSION
Date 17 Aug 1964 Chairman Ray Chase

APPROVED BY CITY COUNCIL
DATE 12 Dec 1964 MAYOR Clayton

APPROVED BY CITY COUNCIL
DATE 8-22-64 MAYOR Clayton

ATTEST: J. Norman
CITY SECRETARY

ATTEST: J. Norman
CITY SECRETARY

FILED FOR RECORD THIS 12 DAY OF October, 1964,
IN PLAT BOOK 916, PAGE 180, DEED RECORDS
OF BELL COUNTY, TEXAS. 2
271
AMENDED DEDICATION
FILED FOR RECORD THIS 10 DAY OF December, 1964,
IN PLAT BOOK 924, PAGE 95, DEED RECORDS
OF BELL COUNTY, TEXAS. 2
27-2



That I, James D. Lee
do hereby certify that I prepared this plat
from an actual and accurate survey of the land
and that the corner monuments shown thereon were
properly placed under my personal supervision,
in accordance with the Subdivision Regulations
of the City of Killen, Texas.
James D. Lee
Signature; Texas Reg. No. 1467

B & L ENGINEERING CO. INC.	
KILLEN, TEXAS	
A. J. HALL'S	
CLIFTON PARK ADDITION SECTION 24	
SCALE 1"=100'	APPROVED BY
DATE 5-2-64	DRAWN BY JF
	REVISOR
TOPOGRAPHIC SURVEY	
FINAL PLAT	
DRAWING NUMBER	DATE