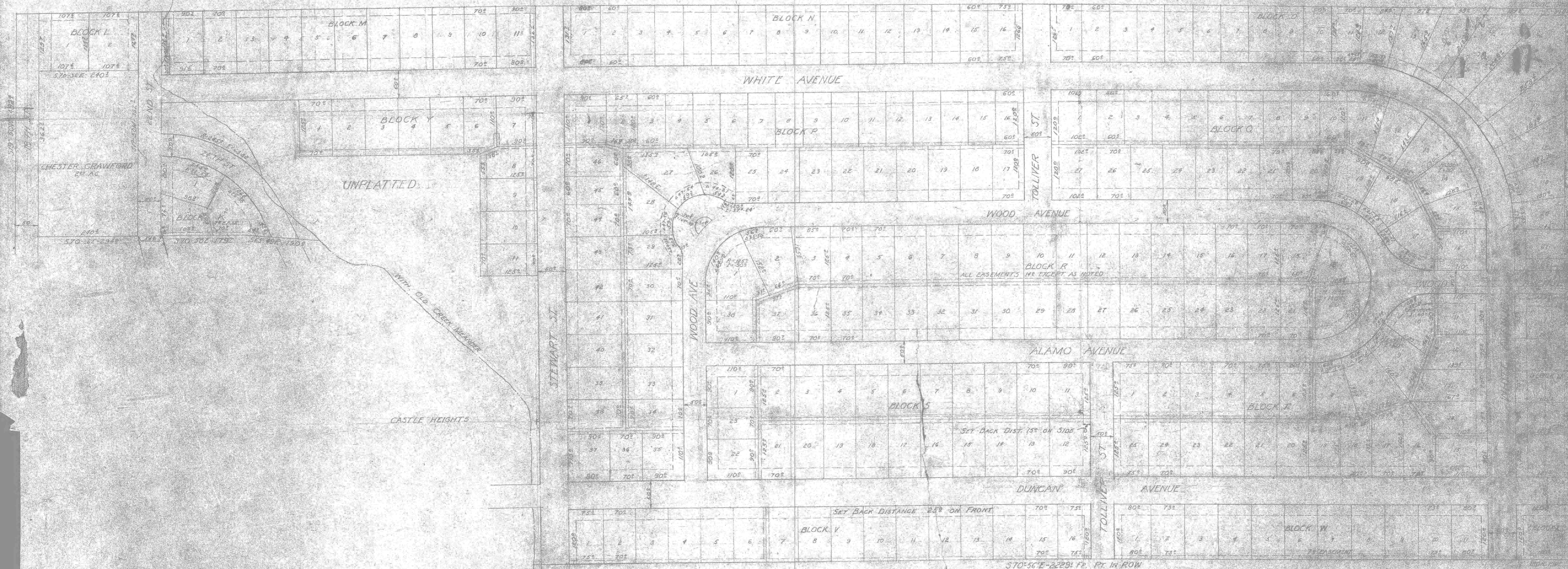


FORT HOOD
U. S. A. MILITARY RESERVATION

N 70° 38' W 33459.76 FT. IN ROW



McNAIR ADDITION

SUBDIVISION PLAT
EXTENSION CASTLE HEIGHTS ADDITION
KILLEEN, TEXAS-74³⁸ AC
HOOD CONSTRUCTION CO. INC.
AUGUST 14, 1951 SCALE 1"=100'
TEMPLE HOUSING CORP. ENGINEERS
A.C. DYKES, JR. LICENSED ENG.

Streets shown herein, if not previously dedicated,
are hereby tendered for dedication to public use.

All lots subject to Declaration of Protective
Covenants recorded simultaneously herewith.

Easements for utilities and drainage
are reserved as shown herein.