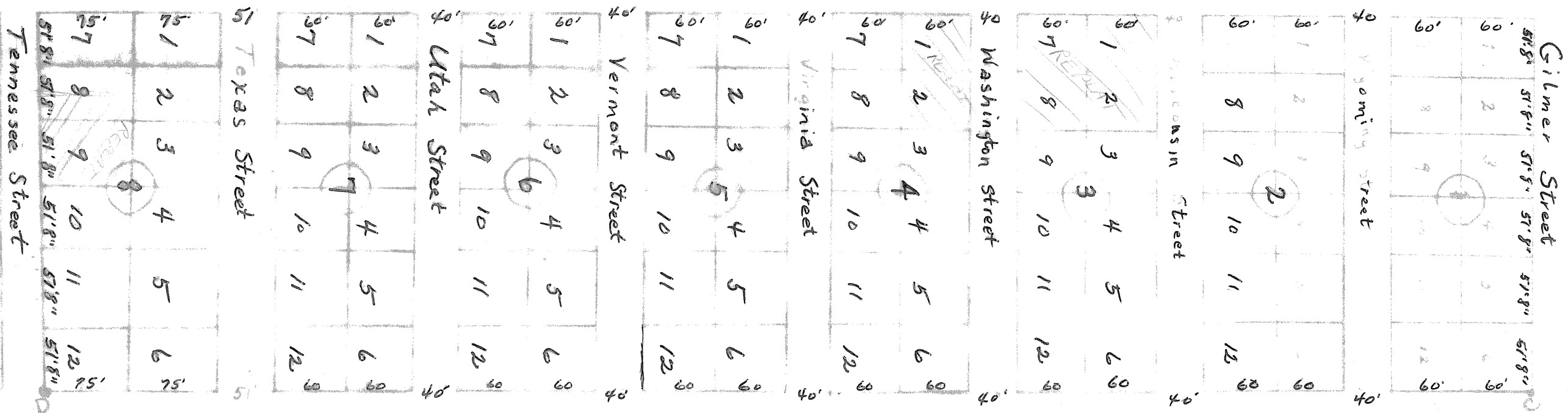


Map of plat in and for Bell County

North

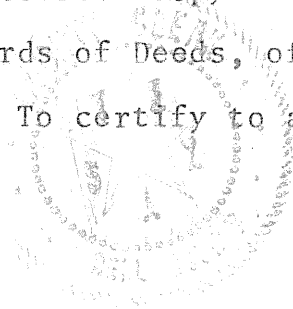


Filed For Record Jan 16, 1942 at 1:00 P.
 Jack Spoons, County Clerk
 Bell County, Texas
 By E. M. Brown, Deputy

THE STATE OF TEXAS I
 COUNTY OF BELL I

I, Ruby McKee Clerk of the County Court, Bell County, Texas do hereby certify that the above and foregoing is a true and correct copy of The Plat and Dedication of Camp Addition as same appears of record in Volume 495 on Page 191 of the Records of Deeds, of Bell County, Texas

To certify to all of which witness my hand and the seal of said Court on this the 17th day of April 1964.



Mrs. Ruby McKee
 CLERK OF THE COUNTY COURT
 OF BELL COUNTY, TEXAS

By *M. Hess* Deputy
 M. Hess