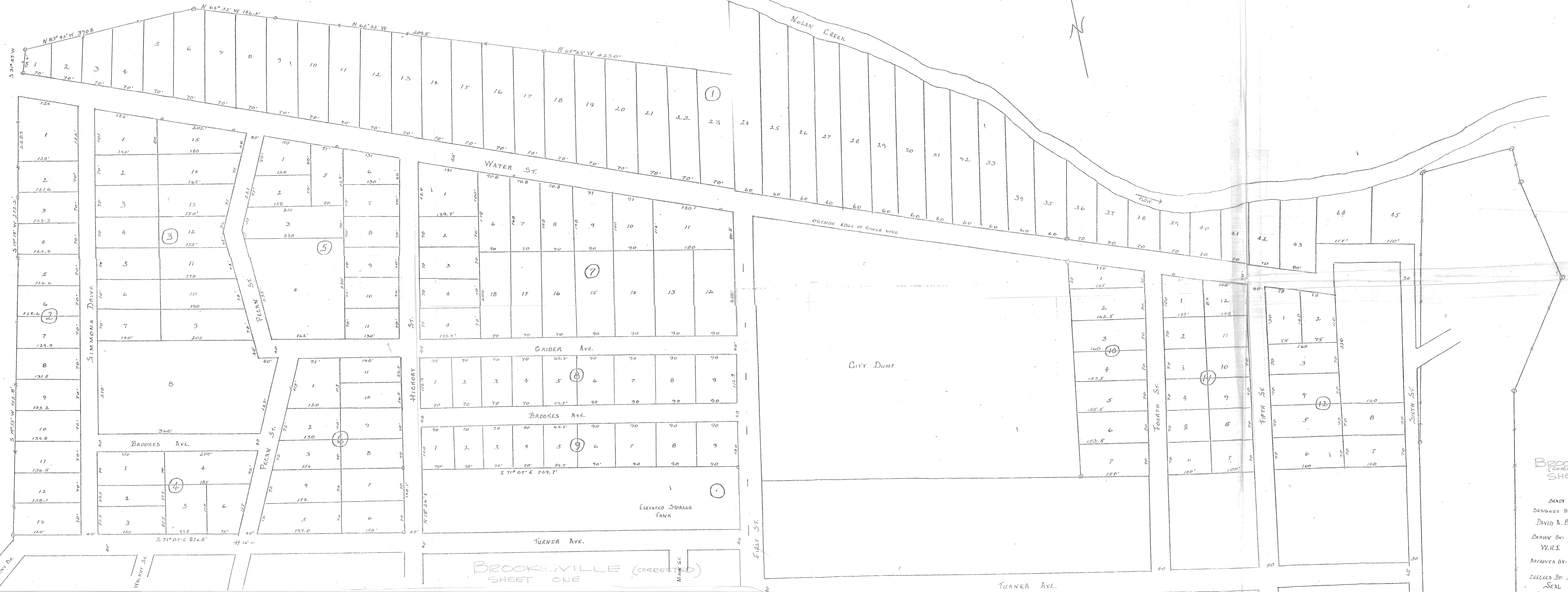


105D

BROOKESVILLE



BROOKESVILLE (CORRECTED) SHEET TWO

BELL & CLAYTON ENGINEERS
 BRADY
 DESIGNER BY: DAVID A. BELL
 DRAWN BY: W.H.S.
 APPROVED BY: _____
 CHECKED BY: _____
 SEAL

BROOKESVILLE ADDITION
 SIMMONSVILLE TEXAS
 PLAN LAYOUT
 SCALE 1" = 100'
 DRAW No. _____

BROOKESVILLE (CORRECTED) SHEET ONE



J. W. SPRINGER 530 AC.
546 - 231

CITY OF KILLEEN
9.65 AC.
536 - 139

TRACT 2
2 AC.
J. R. SIMMONS
SUBDIVISION
VOL 568 PAGE 158

JOHN C. BALLARD
601-388

SE COR CITY OF
KILLEEN 9.65 AC.
536-139
LIVE OAK TREE

NW COR TRACT 1
36.15 AC. 546-158

A. DICKSON SURVEY, 1897
J.S. WILDER SURVEY

PLAT SHOWING LOCATION OF CENTERLINE
10 FT. UTILITY EASEMENT ON J.W. SPRINGER
530 AC. TRACT, LIDDIE B. SIMMONS TRACTS,
JOHN C. BALLARD TRACT, & BROOKES &
DELGADO TRACT IN A. DICKSON & J.S.
WILDER SURVEYS IN BELL COUNTY, TEXAS

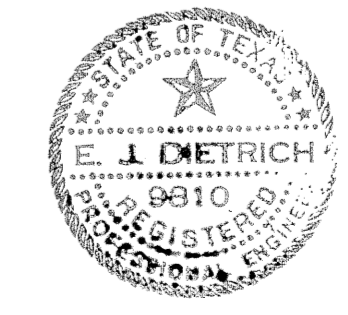
SCALE 1" = 100'

* LOT 8, BLK 12 BROOKSVILLE ADDN. 1-568
& LOT 13 J.R. SIMMONS SUBDIVISION 36.15 AC.
568-158 ARE IDENTICAL AS ARE LOTS 7 & 14

LOTS 2 & 11 BLK 11, LOTS 1 & 2 BLK 12,
BROOKSVILLE ADDN., & TRACT 2 OF J.R.
SIMMONS SUBDIVISION 36.15 AC. ARE OWNED
BY LIDDIE B. SIMMONS, WIFE OF J.R.
SIMMONS DECEASED

SOUTH 33' LOT 2 & NORTH 31' LOT 3 ARE
OWNED BY SLATS BROOKES & FRANK
DELGADO 773-403 LOT 3 & LOT 2 ARE
PART OF BLK 10 BROOKESVILLE ADDITION

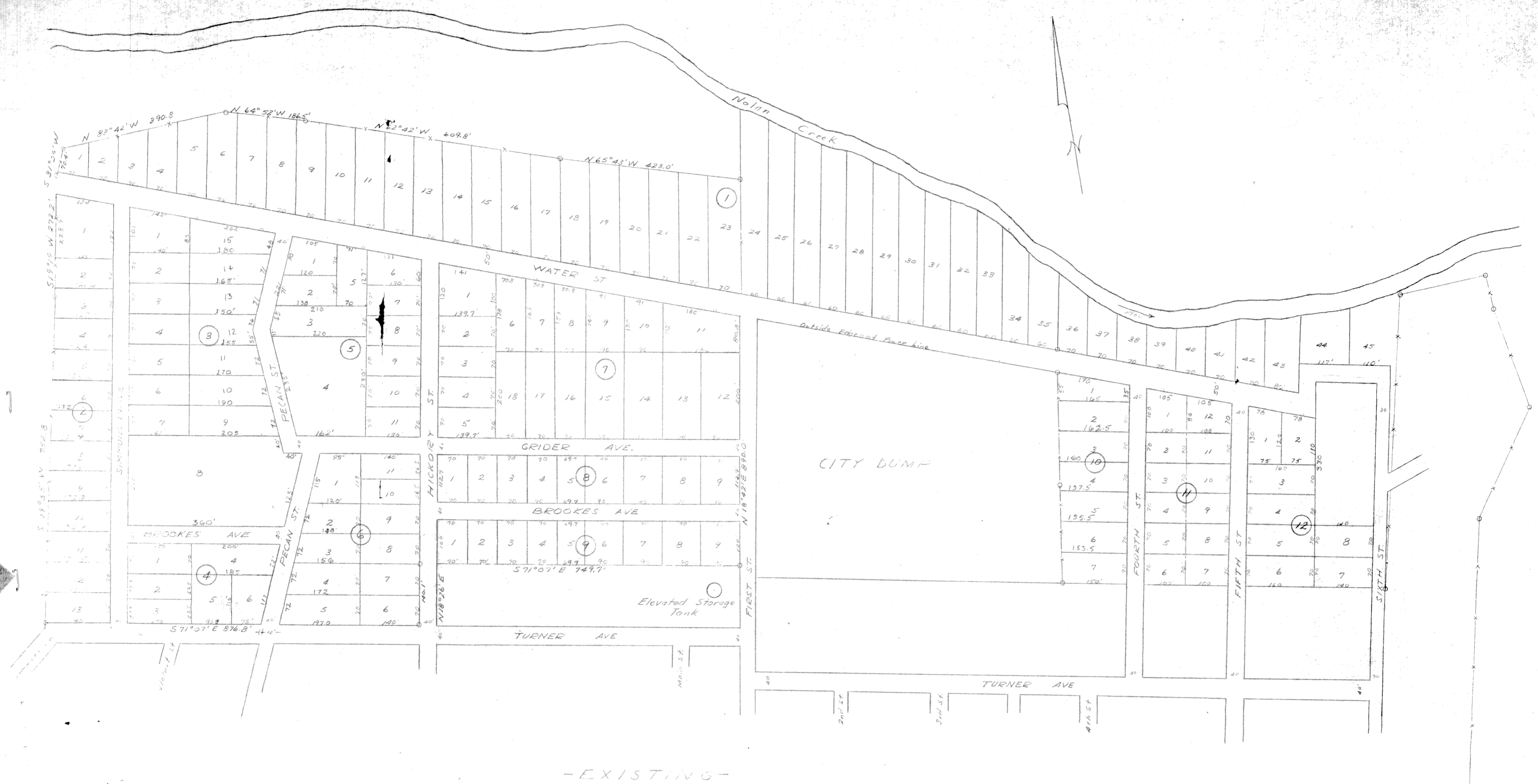
U.S. HWY. 190



BERNARD JOHNSON & ASSOCS.
CONSULTING ENGINEERS
HOUSTON TEXAS

I hereby certify this plat to be true and
correct as reflected by an actual survey
made on the ground, this the 21st day
of Sept., 1960

E. J. Dietrich
E. J. DIETRICH
Registered Professional
Engineer



-EXISTING-

BELL & CLAYTON ENGINEERS	
DESIGNED BY <i>David P. Bell</i>	BROOKESVILLE ADDITION
DRAWN BY <i>W.N.J.</i>	SIMMONSVILLE TEXAS
PLAN LAYOUT	
SCALE 1" = 100'	DATE June 14, 52

CORRECTED PLAN